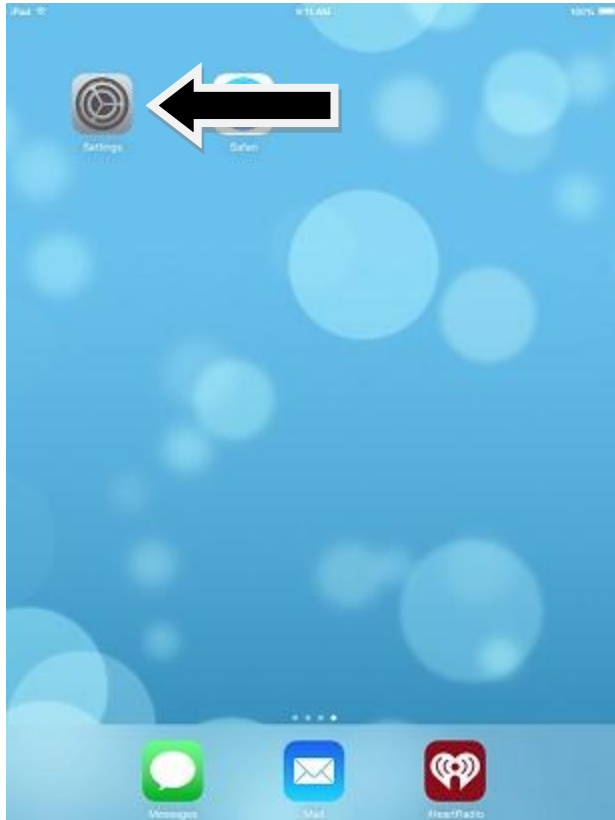


How to connect to Missouri Western State University Wireless with an iOS device.

Last Updated: 6/18/2014

The following screenshots were taken from an iPad with iOS 7. Other iOS device settings can vary from device to device depending on version of iOS

Select **Settings** from the home screen.



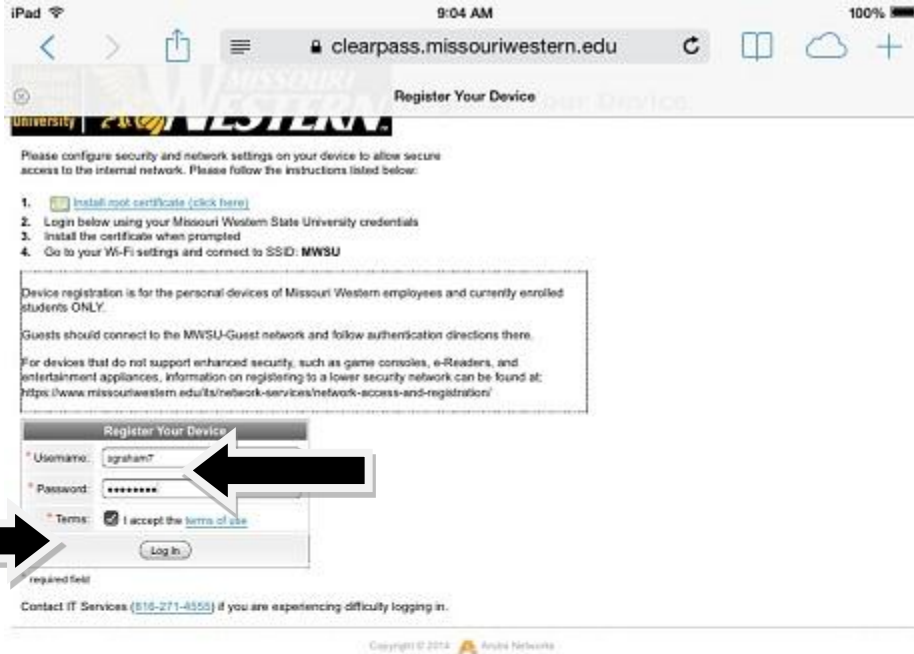
From the **Settings** screen select **Wi-Fi** and then select **MWSU-HowToConnect**.



Go back to the home screen and select **Safari**.



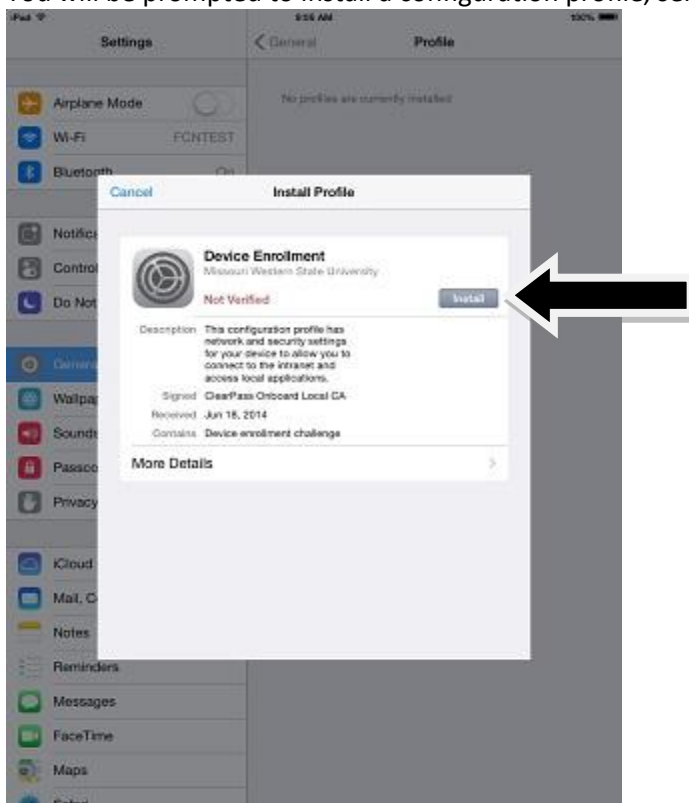
When Safari opens it should want you to **Register Your Device**, if it does not open to this page go to a different website and you should be redirected to this page. Enter your MWSU username. MWSU password, and accept the terms. Select **Log In** to continue.



It will begin to register your device.



You will be prompted to install a configuration profile, select **Install** to continue.



You will get a message about the profile being unverified, select **Install Now** to continue.



There will be one more warning about it being a unverified profile, select **Install** to continue.



You are now finished installing the profile. Select **Connect** to connect to Western Wireless.



If the connect does not work you will need to go back into **Settings** from the home screen and then select **Wi-Fi**. From the **Wi-Fi** screen select **MWSU** and you will be connected to the Western Wireless.



******If you need assistance, please come by the Information Technology Services department in Hearn Center 110 or you can contact the Help Desk at (816) 271-4555.******