

How to connect to Missouri Western State University Wireless with a Windows 8 Device

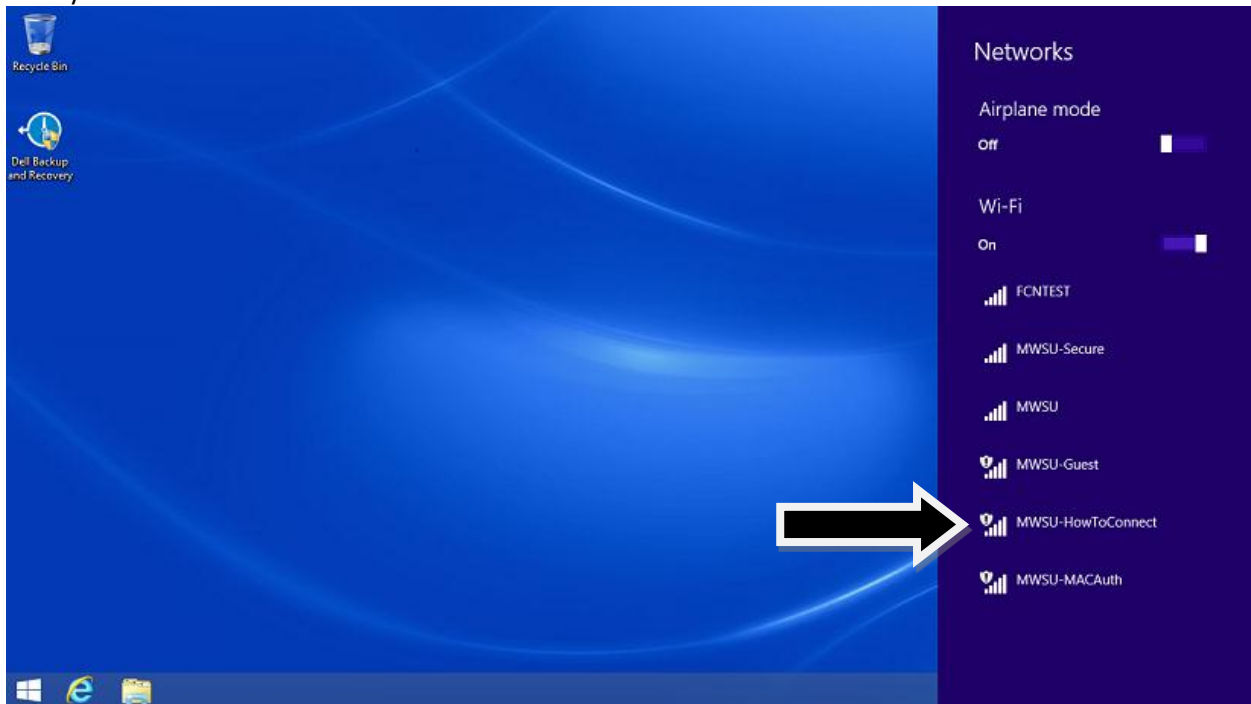
Last Updated: 6/17/2014

The following screenshots were taken from a Windows 8 device. Other Windows device settings can vary from device to device depending on version of Windows operating system

Select the wireless icon in the system tray.



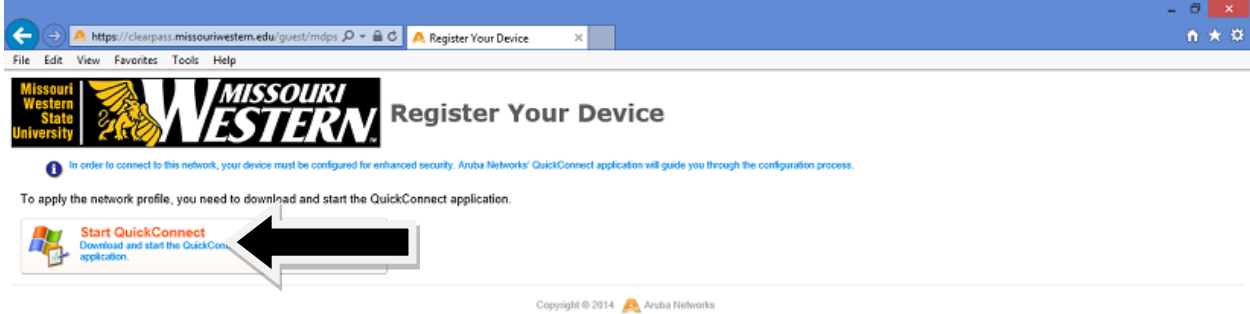
Now you will want to select **MWSU-HowToConnect**.



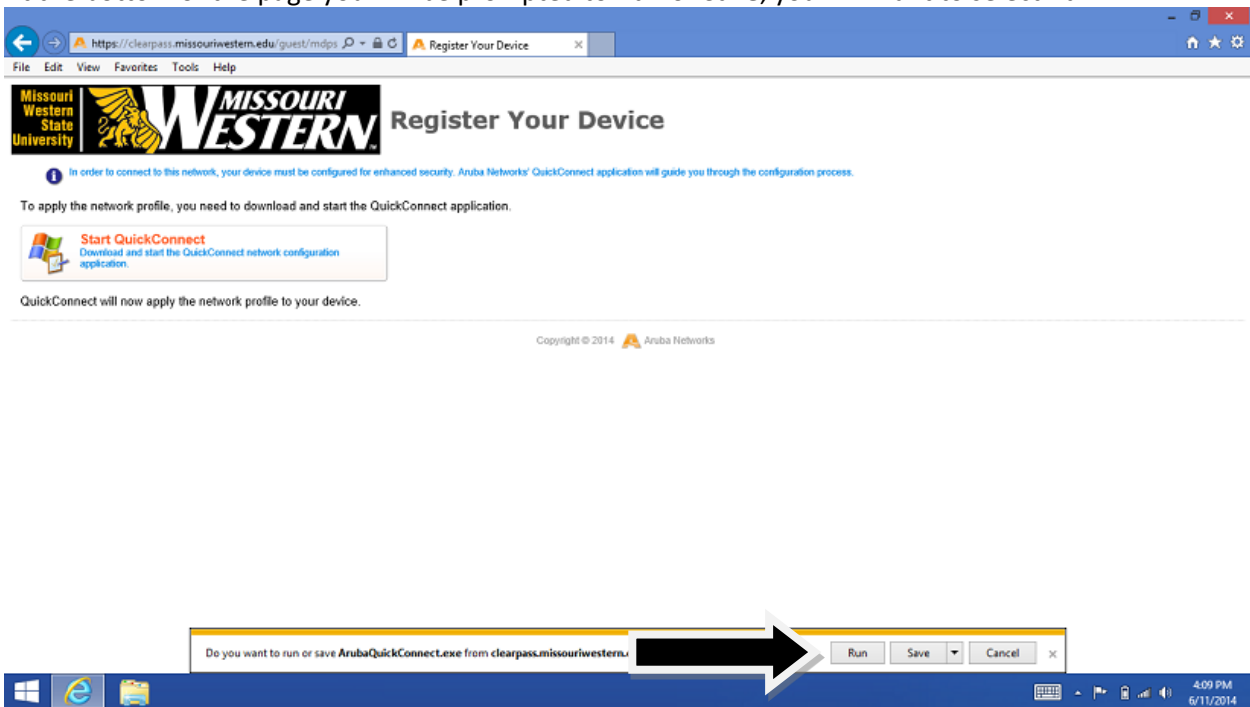
If Internet Explorer does not automatically open you will need to open it manually. The following page should open, you will need to enter your **MWSU username**, **MWSU password**, and **then accept the terms**. Once everything is entered select **Log In**.



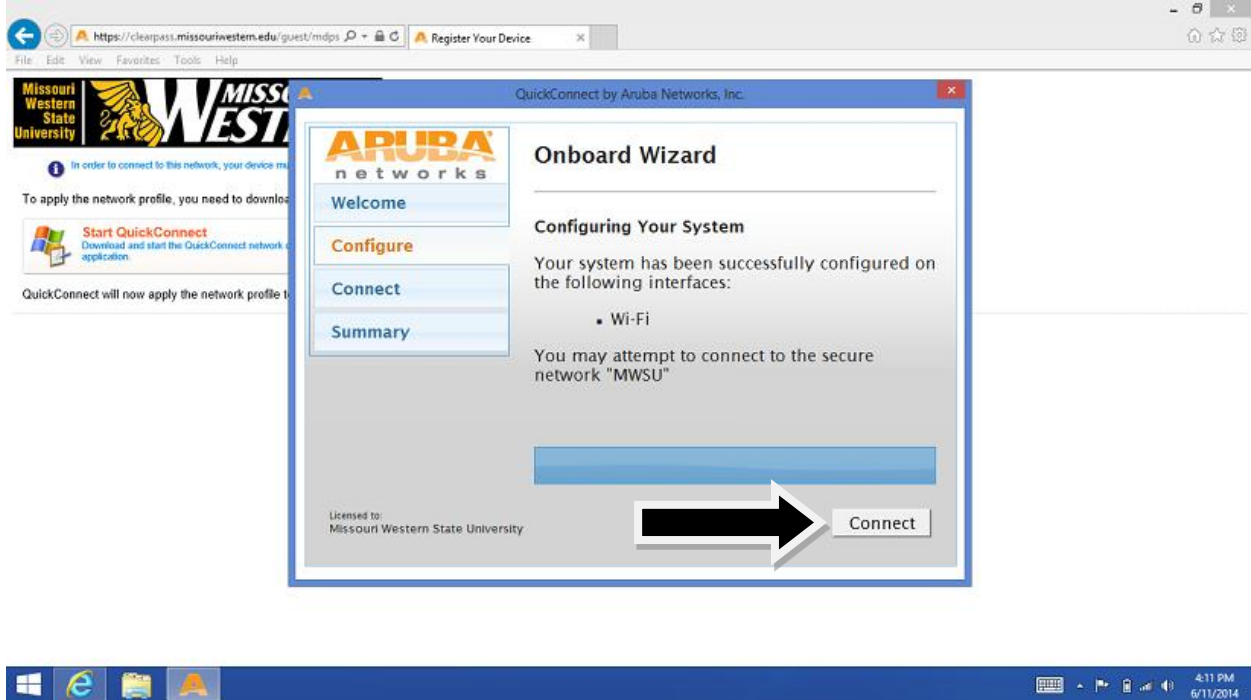
You will now need to download the QuickConnect application, select **Start QuickConnect** when prompted.



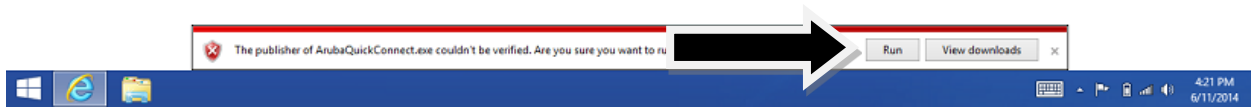
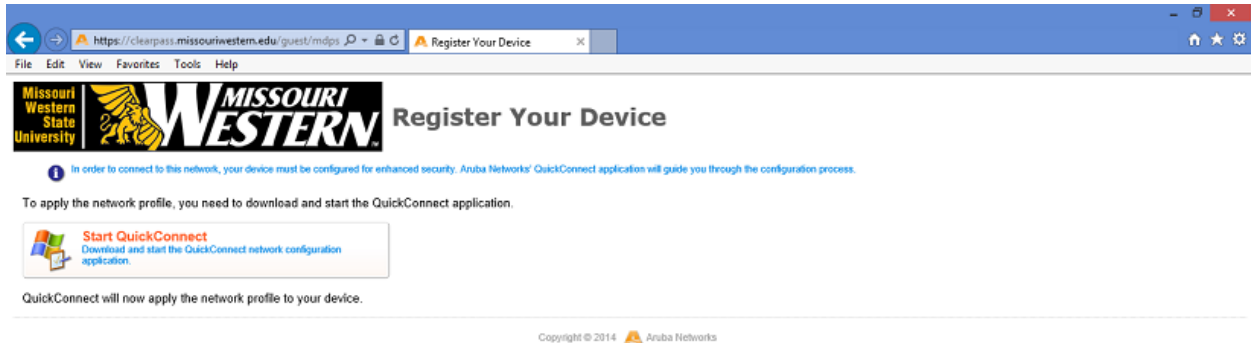
At the bottom of the page you will be prompted to **Run** or **Save**, you will want to select **Run**.



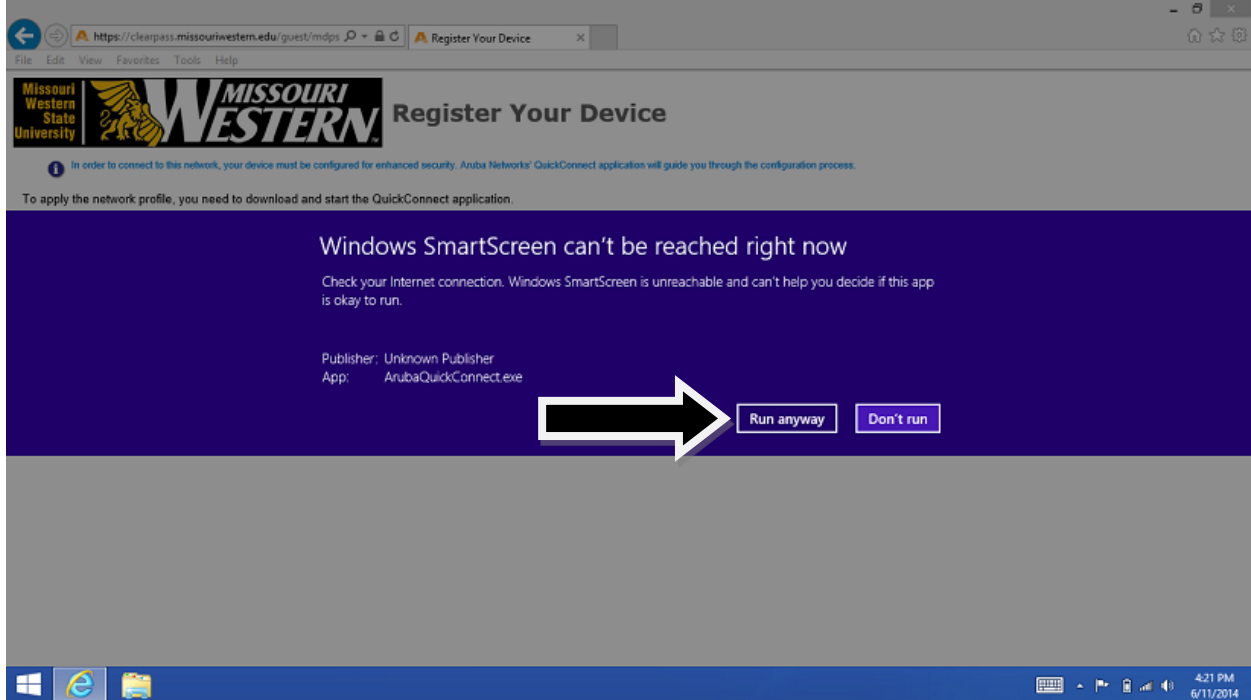
Once QuickConnect has finished downloading you will be prompted to **Configure Your System**, select **Continue** to proceed.



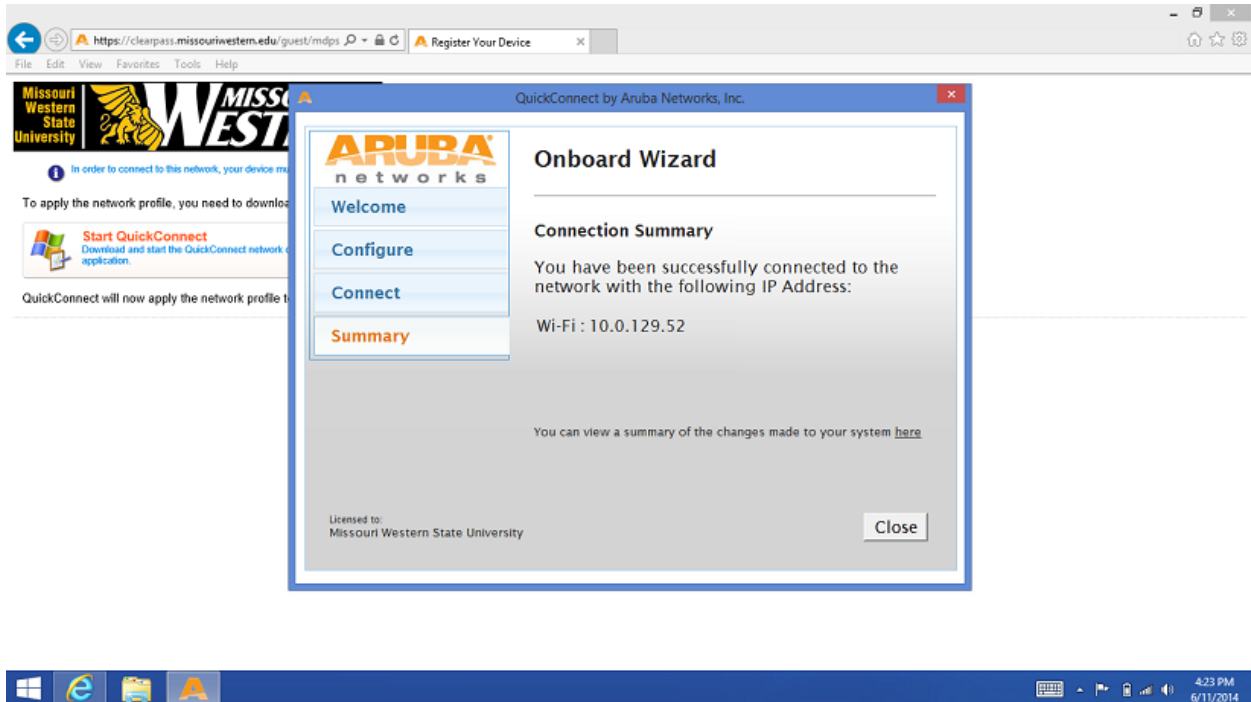
At the bottom of the screen you may see a warning that **ArubaQuickConnect** could not be verified, select **Run**.



There might be another warning about **ArubaQuickConnect** could not be verified, select **Run anyway** to proceed.



If there we no issues, you should see the following and are now successfully connected to Western Wireless.



******If you need assistance, please come by the Information Technology Services department in Hearnese Center 110 or you can contact the Help Desk at (816) 271-4555.******