

# How to connect to Missouri Western State University Wireless with an Android Device

## Last Updated: 6/11/2014

*\*The following screenshots were taken from a Samsung Galaxy S3. Android device settings can vary from phone manufacturer and version of Android operating system\**

---

From the home screen select **Apps**.



Select **Settings** or scroll through your **Apps** to find **Settings**.



From the **Settings** screen select **Wi-Fi**.



You should now see a list of MWSU Wireless networks, select **MWSU-HowToConnect**.



It will either open the **Internet** browser automatically or prompt you for which one you would like to use.



The **MWSU Register Your Device** page should open. You will want to enter your **MWSU username** and **MWSU password**. Be sure to also accept the terms before selecting log in.



You will be prompted to install the **QuickConnect** application from Google Play. Select **Next** at the bottom of the page.



It will open up the **ClearPass QuickConnect** install within Google Play, select install.



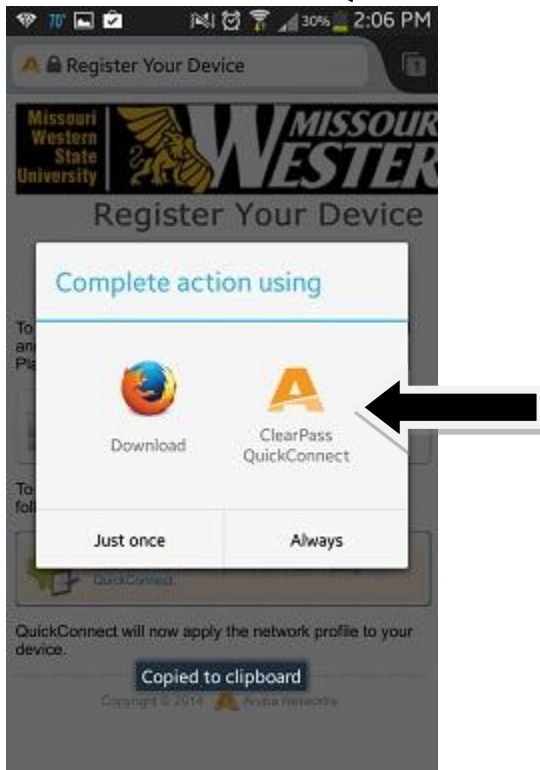
You will need to go back to your **Internet** browser after the install and select **Next**.



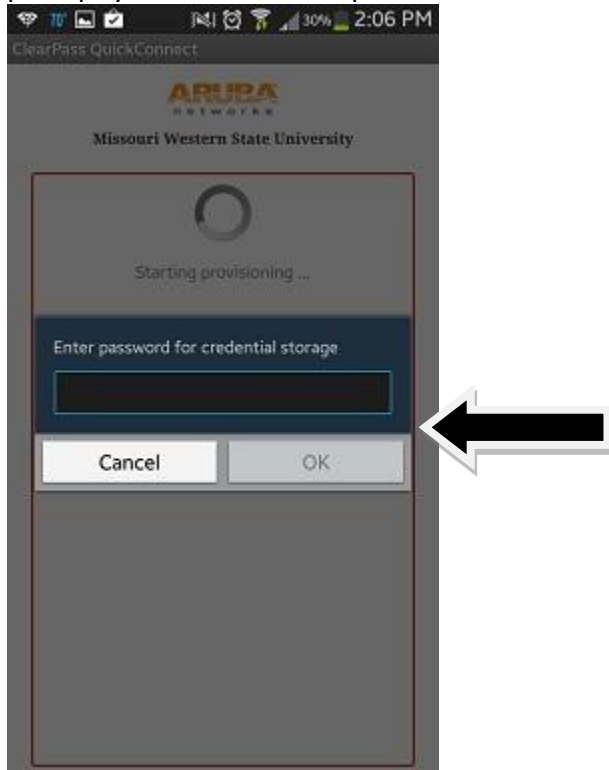
Now you will need to install the network profile by selecting **Install Network Profile**.



After selecting **Install Network Profile** you may be prompted what application to use, you will want to select **ClearPass QuickConnect**.



Next it will ask for credential storage if there is no security setup for the lock screen. Enter in a password and then select **OK**. If you have security setup for the lock screen it will either prompt you for it or attempt to connect to the MWSU wireless network.



You will see the following screen if you do not have credential storage setup, select **OK**.

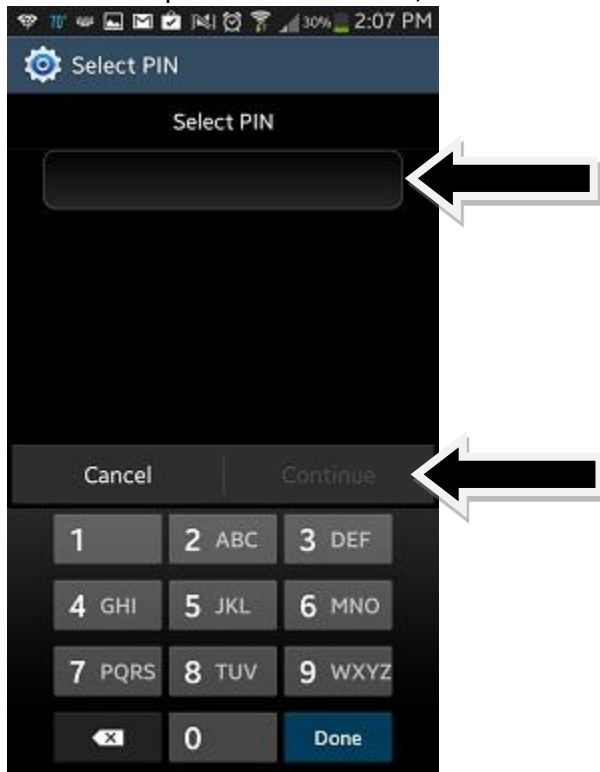


Select one of the following, *you will want to make sure that you select one that you will not forget as you will be asked for it again in the future.*

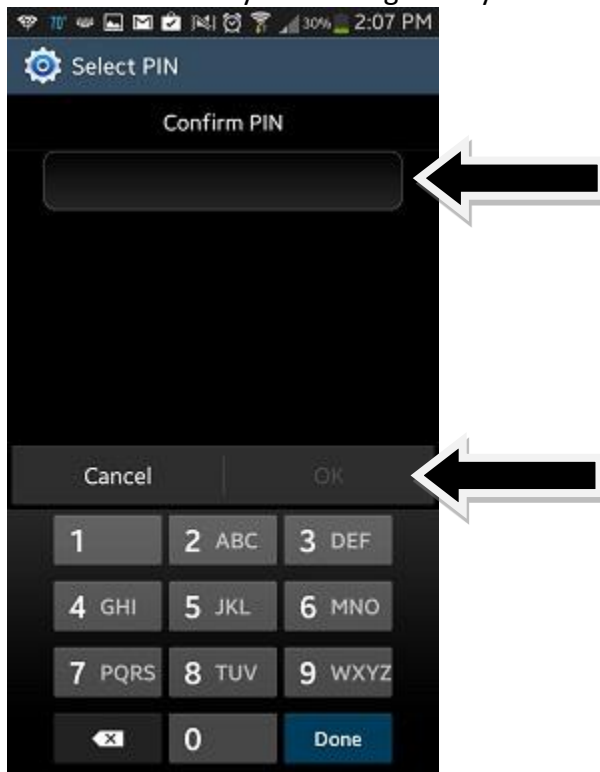




In this example **PIN** was chosen, enter a **PIN** number and then select **Continue**.



Confirm the **PIN** by reentering what you entered above and then select **OK**.



If all the steps were done correctly you should now be connected to Western Wireless.



***\*\*\*If you need assistance, please come by the Information Technology Services department in Hearn Center 110 or you can contact the Help Desk at (816) 271-4555.\*\*\****