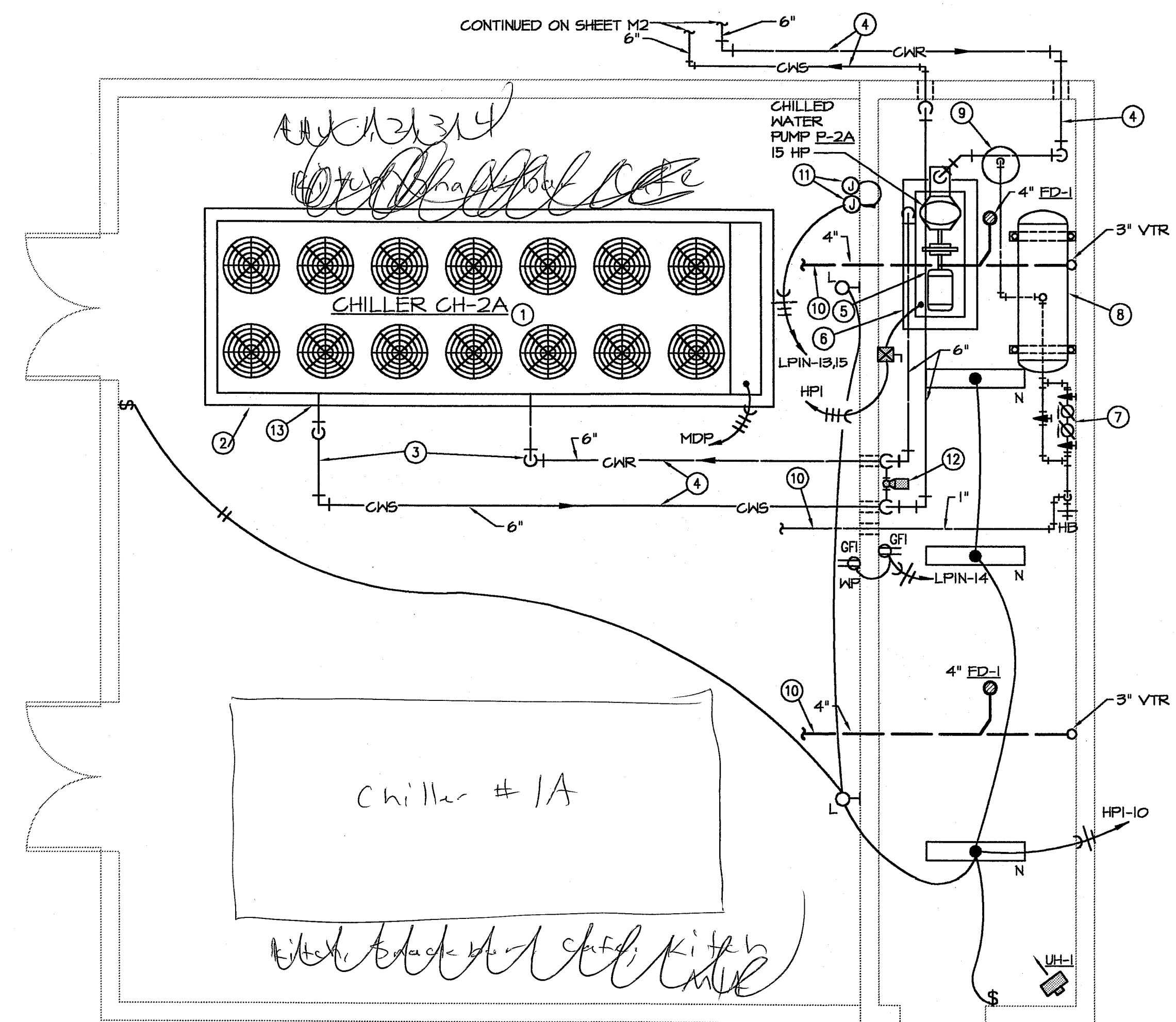


PUMP SCHEDULE	
DESIGNATION	P-2A
MANUFACTURER	BELL & GOSSETT
LOCATION	CHILLER BLDG.
MODEL NO.	1510-4BC
SERVICE	CHILLER CH-2A
PUMP TYPE	CENTRIFUGAL
GPM	480
PUMP HEAD (FT.)	75
MOTOR HORSEPOWER	15
MOTOR RPM	1750
VOLTAGE/PHASE	480/3
PANEL & CIRCUIT	HPI-2B
WIRE & CONDUIT	3#8, #10G, 3/4" C.
OVERCURRENT DEVICE	40A
DISCONNECT	60A/3
STARTER	—
COMBINATION STARTER	YES
CONTROL	120V
REFERENCE DRAWING/DETAIL	
REMARKS	

① PROVIDE PUMP UNDER ALTERNATE BID.

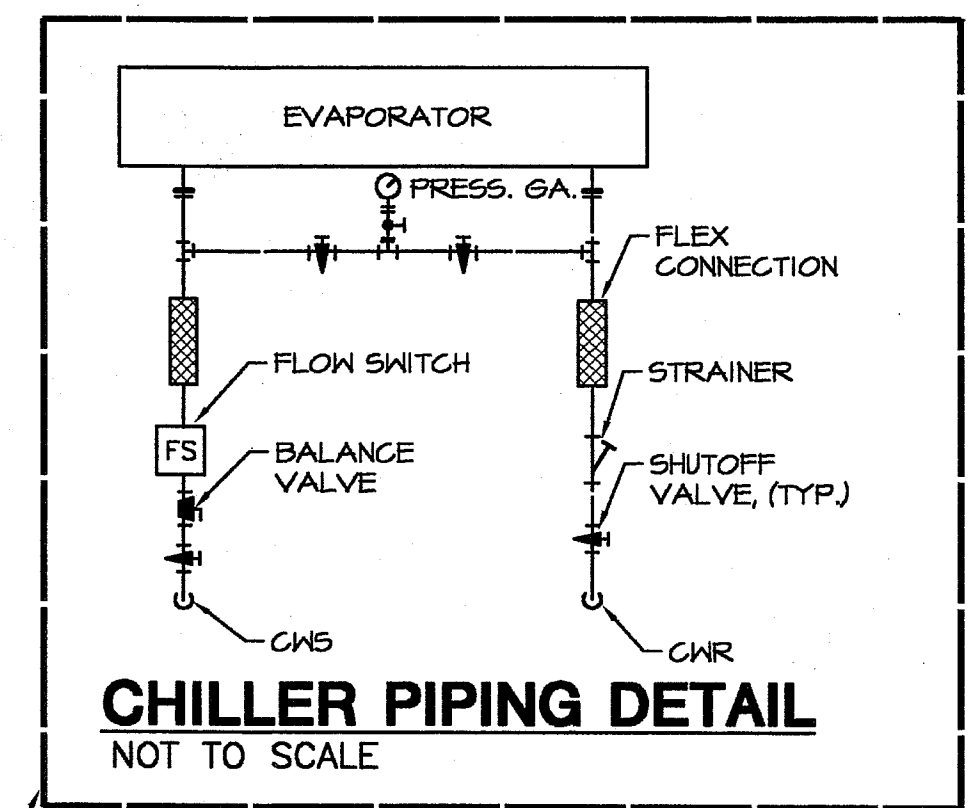
CONDENSATE & BOILER FEED PUMP SCHEDULE			
DESIGNATION	CP-1	BFF-1	
MANUFACTURER	DOMESTIC	DOMESTIC	
LOCATION	BSMT.	EAST PENTHOUSE	
MODEL NO.	36CB15-30	1525 CM.	
RECEIVER (GALLONS)	23	75	
GPM	15	15	
PUMP HEAD (PSI.)	30	25	
MOTOR HORSEPOWER ①	1	3/4	
MOTOR RPM	3500	3500	
VOLTAGE/PHASE	480/3	480/3	
PANEL & CIRCUIT	HPB-17	④	
WIRE & CONDUIT	3#12, 1#12G, 3/4" C.	3#12, 1#12 G, 3/4" CONDUIT	
OVERCURRENT DEVICE	15A/3P	15A/3P	
DISCONNECT	②	②	
STARTER	②	②	
COMBINATION STARTER	-	-	
CONTROL	②	③	
REFERENCE DRAWING/DETAIL			
REMARKS			

- ① DUPLEX PUMP
- ② PROVIDED WITH PUMP CONTROL PANEL
- ③ PUMP CONTROL FROM BOILER FEED WATER VALVE.
- ④ PROVIDE A 15A/3P BREAKER IN AN EXISTING 480V, EAST PENTHOUSE PANEL TO FEED "BFF-1"

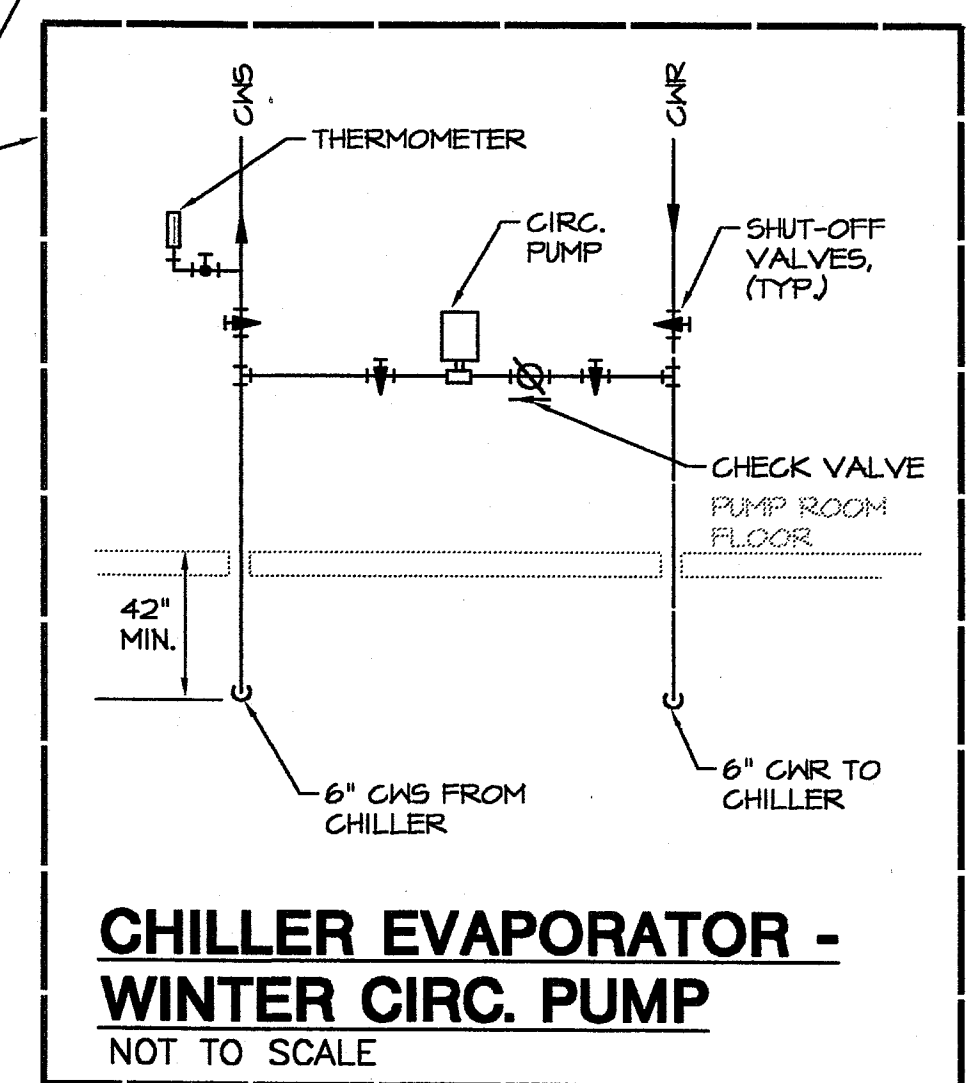


MECHANICAL/ELECTRICAL CHILLER BUILDING
SCALE: 1/4"=1'-0"
(DELETE UNDER ALTERNATE #8)

- MECHANICAL PLAN NOTES:**
- SEE THE CHILLER SCHEDULE ON THIS SHEET.
 - PROVIDE A 6" HIGH LEVEL CONCRETE HOUSE KEEPING PAD 6" LONGER THAN THE UNIT ON ALL SIDES.
 - THIS 6" CWS & CWR PIPING SHALL BE HEAT TRACED TO 36" BELOW FINISHED GRADE.
 - THESE 6" CWS & 6" CWR PIPES ARE 42" BELOW GRADE.
 - SEE THE PUMP SCHEDULE ON THIS SHEET.
 - PROVIDE A 4" HIGH LEVEL CONCRETE HOUSE KEEPING PAD 6" LONGER THAN THE PUMP ON ALL SIDES.
 - PROVIDE A 3/4" DOMESTIC COLD WATER MAKE UP LINE WITH BACKFLOW PREVENTOR. PIPE BACKFLOW DRAIN LINE TO NEAREST FLOOR DRAIN.
 - PROVIDE A 24"Ø BY 65" LONG COMPRESSION TANK WITH A B&G ATF. TANK FITTING OR EQUAL. SUPPORT THIS TANK FROM STRUCTURE ABOVE.
 - PROVIDE A B&G MODEL R-5 ROLAIRTROL OR EQUAL.
 - FOR CONTINUATION, SEE SHEET M6.
 - J-BOXES WITH 20A, 120V CIRCUITS FOR CHILLER PIPE HEAT TRACE AND CHILLER BARREL HEATER.
 - CHILLER EVAP. WINTER CIRC. PUMP. SEE DETAIL THIS SHEET.
 - SEE CHILLER PIPING DETAIL THIS SHEET.



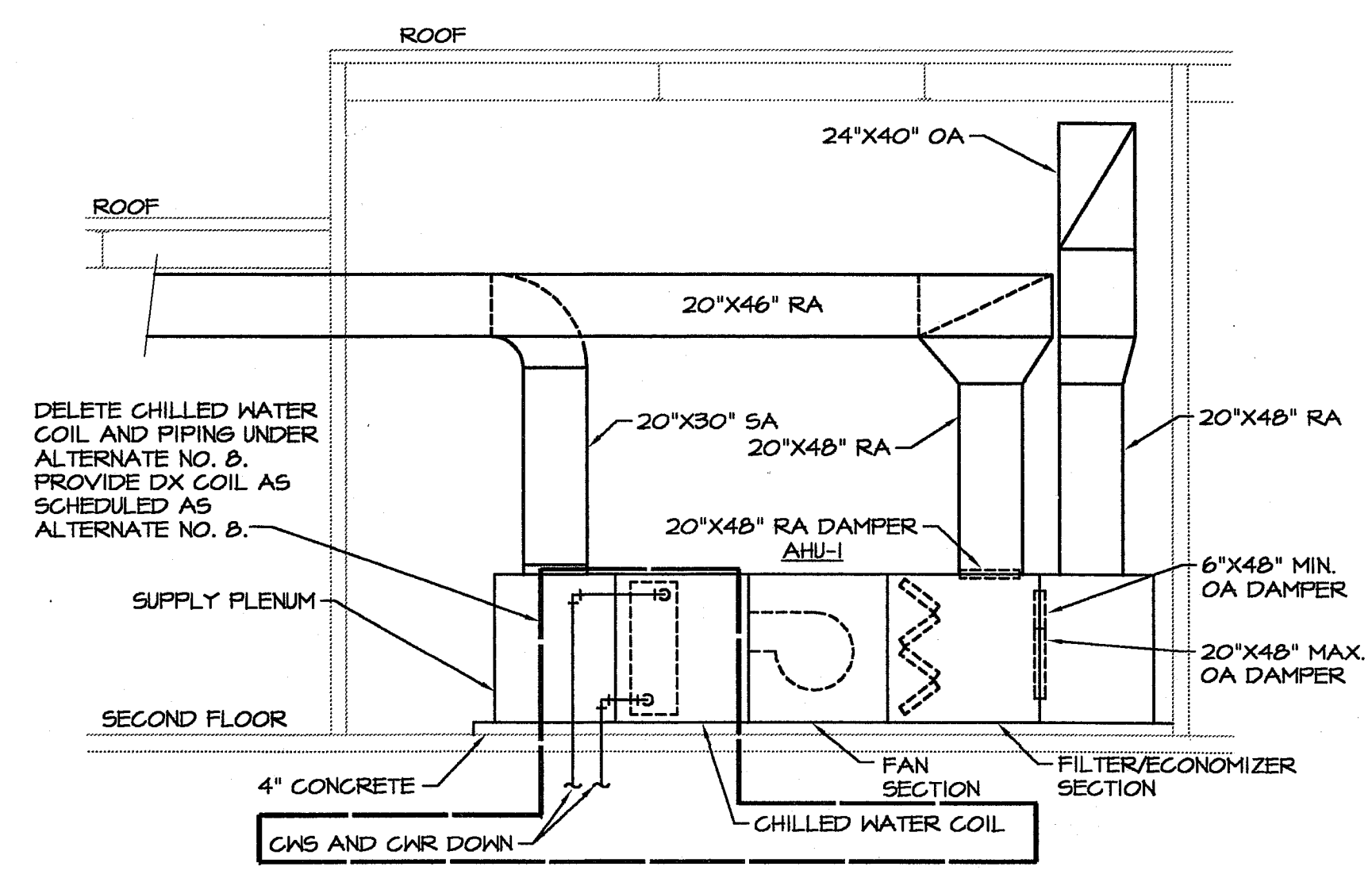
CHILLER PIPING DETAIL
NOT TO SCALE



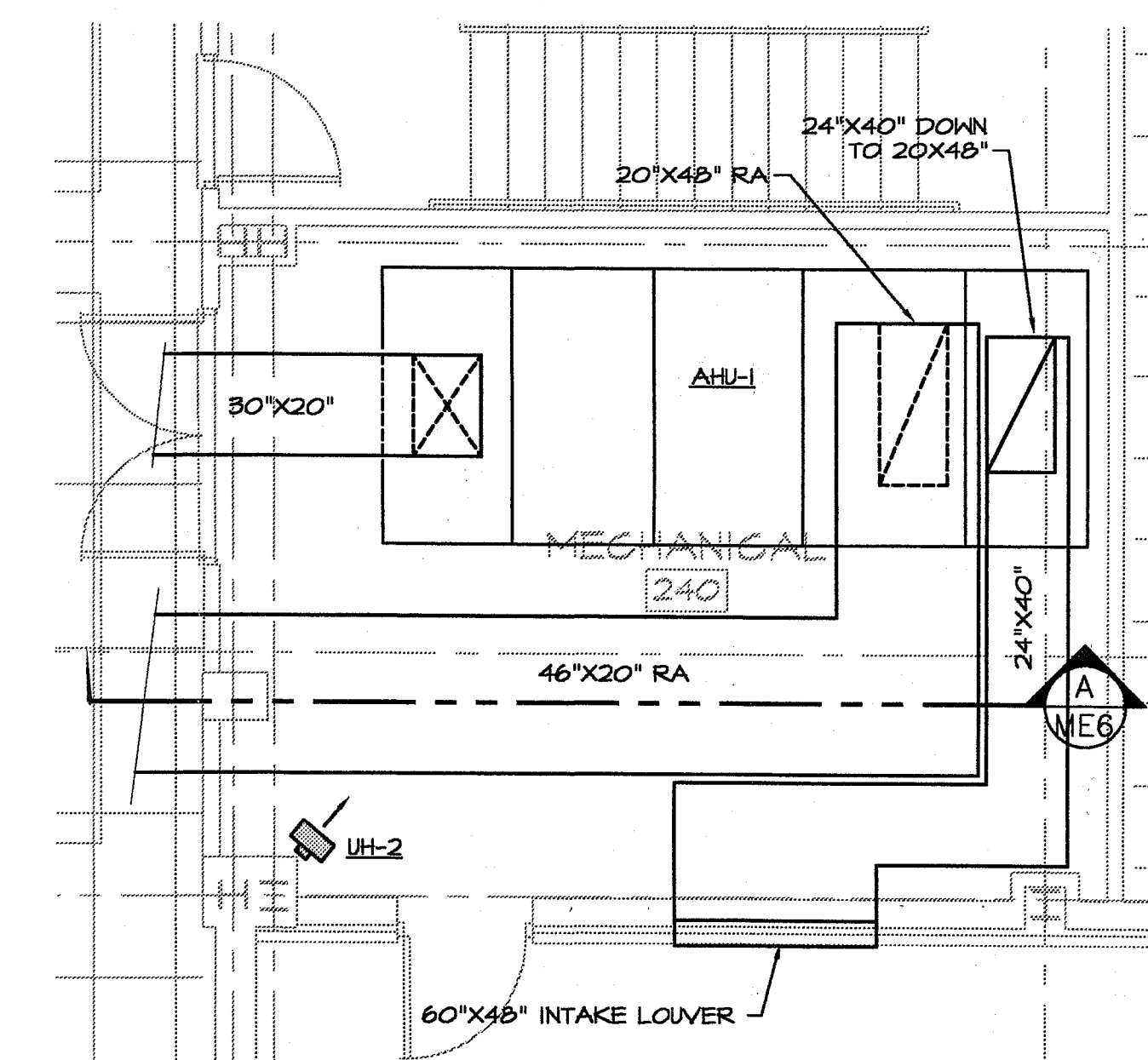
CHILLER EVAPORATOR - WINTER CIRC. PUMP
NOT TO SCALE

AIR COOLED CHILLER SCHEDULE	
DESIGNATION	CH-2A
MANUFACTURER	McQUAY
MODEL	ALS-204A
COMPRESSOR TYPE	SCREW
TONS (@ 95 DEG. F AMBIENT)	204
MAX KW (COMPRESSOR)	227
MIN. EER	4.6
EWT (DEG. F)	55
LWT (DEG. F)	45
GPM	480
WATER PRESS. DROP (FT. H2O)	15 FT.
QUANTITY	THO
TONS/CIRCUIT	102/102
TYPE	R-22
NO. REFRIGERANT CIRCUITS	2
VOLTAGE/PHASE	480/3
MCA	394
PANEL & CIRCUIT	MDB
WIRE & CONDUIT	2 SETS OF 3#4/0, #26, 2-1/2" C EA.
OVERCURRENT DEVICE	500/3P
DISCONNECT	600 AMP
STARTERS	①
COMBINATION STARTER	—
CONTROL	120V
REFERENCE DRAWING/DETAIL	
REMARKS	

① Y-Δ STARTER IS PROVIDED BY THE EQUIPMENT MAKER.

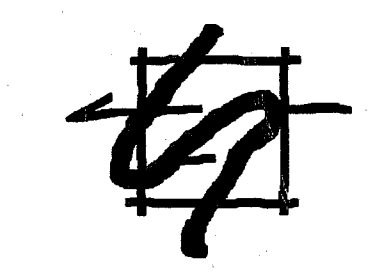
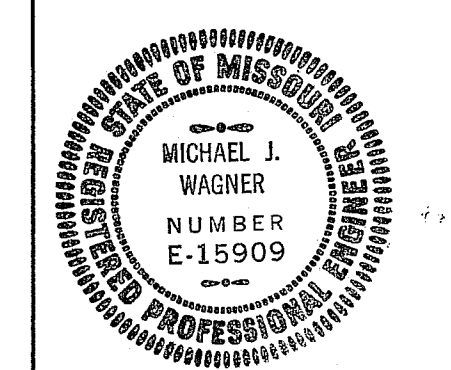


SECTION OF AHU-1
SCALE: 1/4"=1'-0"



PARTIAL FLOOR PLAN - MECHANICAL ROOM 240
SCALE: 1/4"=1'-0"

MISSOURI STATE UNIVERSITY
 PROJECT NAME:
 CAD DRAWING FILE NAME:
 PLOTTED SHEET NAME/NUMBER:
 LAST CORRECTION DATE:
 PLOT DATE:



ELLISON-AUXIER ARCHITECTS INC.
 924 FRANCIS ST. JOSEPH, MO 64501 (816) 233-8003 FAX 233-7793

PROJECT: PROPOSED RENOVATIONS STUDENT UNION MISSOURI WESTERN STATE COLLEGE 4525 DOWNS DRIVE SAINT JOSEPH, MISSOURI

SHEET: MEG
DATE: 12-8-98

S&B #4821902

SMITH & BOUCHER, INC.
 CONSULTING ENGINEERS
 8620 WEST 110TH STREET
 OVERLAND PARK, KANSAS 66210
 (913) 345-2127
 smith & boucher, inc. (913) 345-0617 (FAX)