

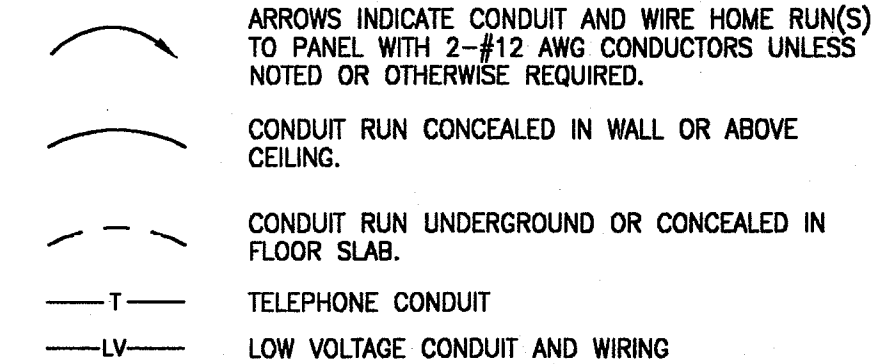
ELLISON-AUXIER ARCHITECTS INC.

924 FRANCIS ST. JOSEPH, MO 64501 (816) 233-8003 FAX 233-7793

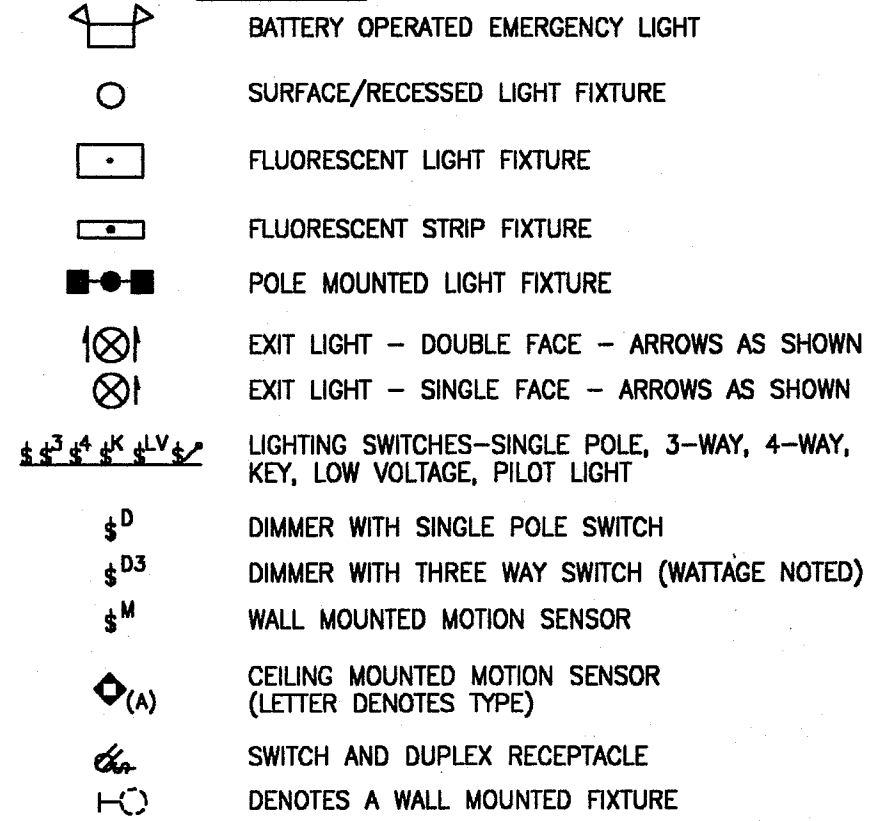
PROJECT: PROPOSED RENOVATIONS STUDENT UNION MISSOURI WESTERN STATE COLLEGE 4525 DOWNS DRIVE SAINT JOSEPH, MISSOURI

SHEET: MEI DATE: 12-8-98

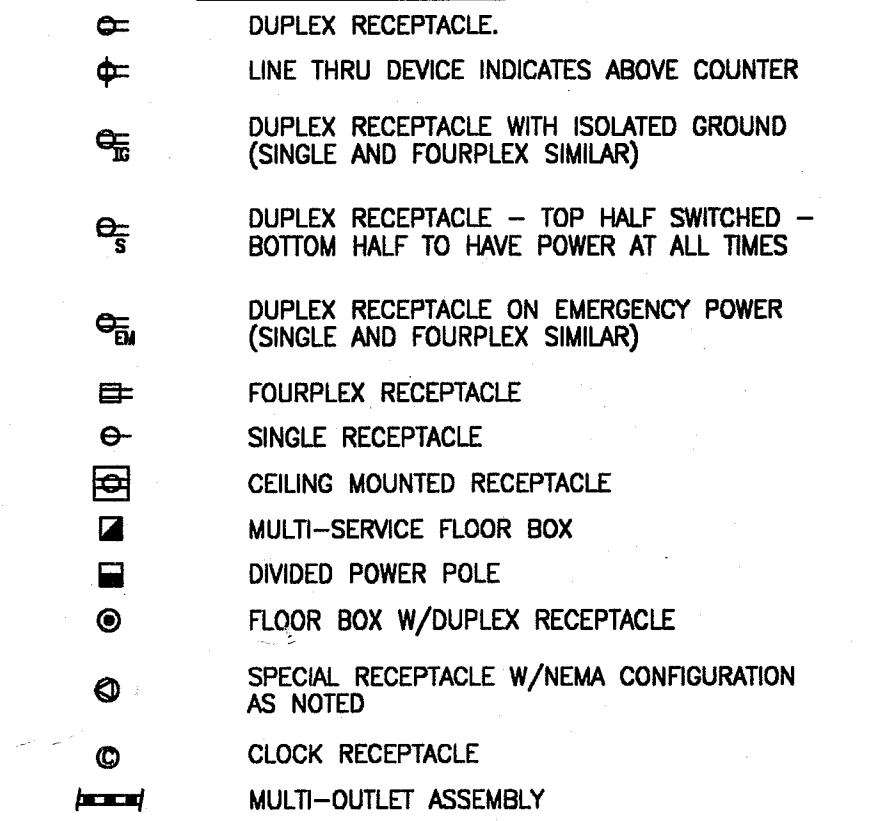
CONDUIT AND WIRE



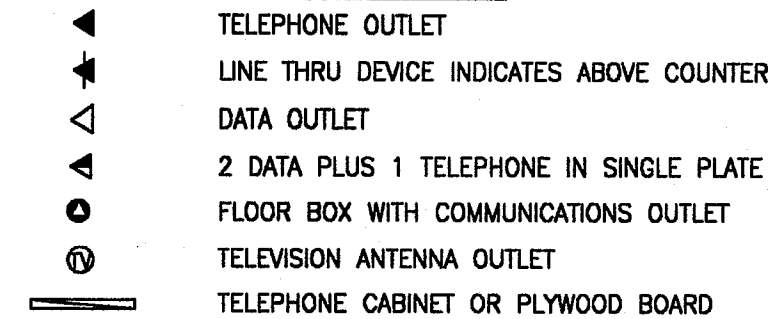
LIGHTING



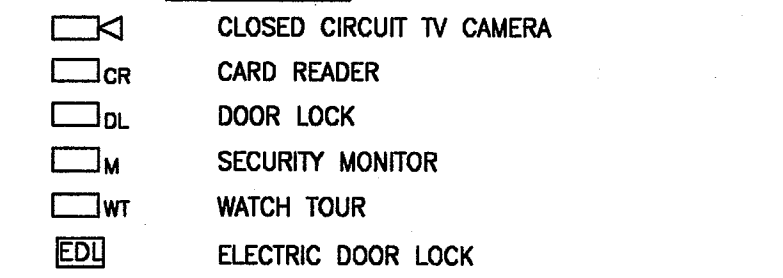
WIRING DEVICES



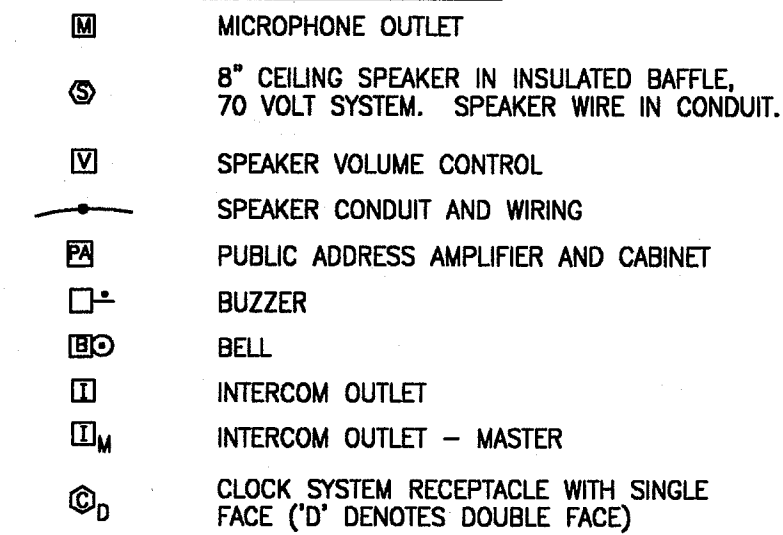
COMMUNICATIONS



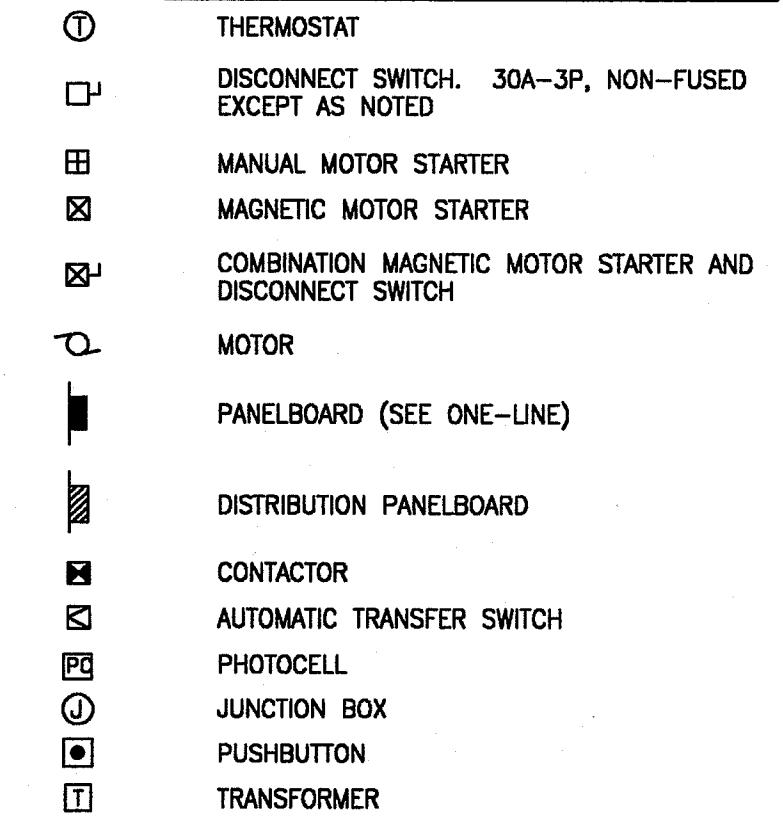
SECURITY



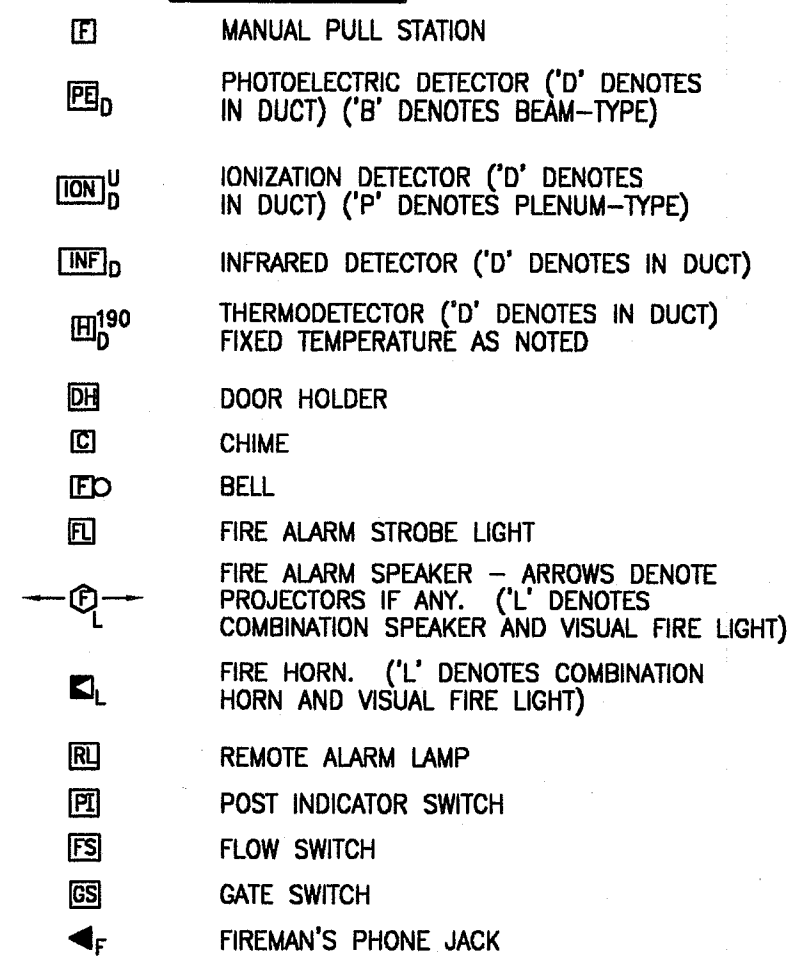
PUBLIC ADDRESS



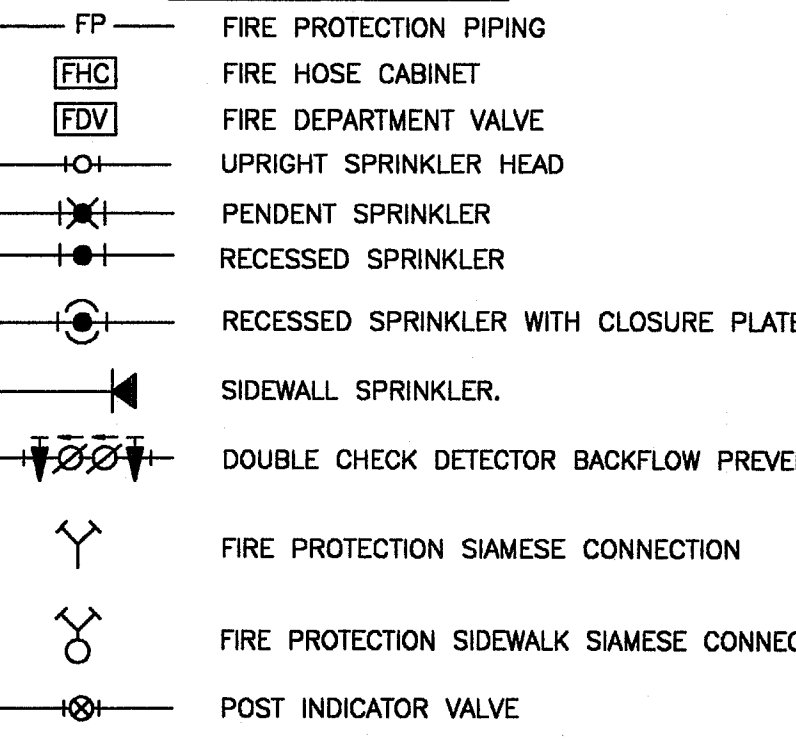
POWER DEVICE AND CONTROLS



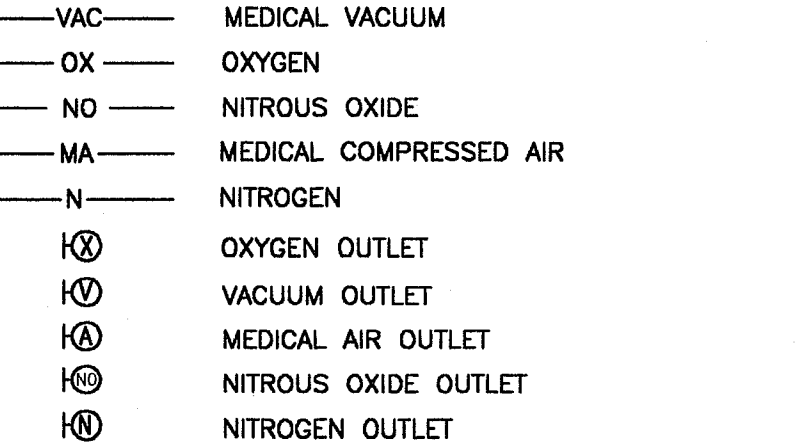
FIRE ALARM



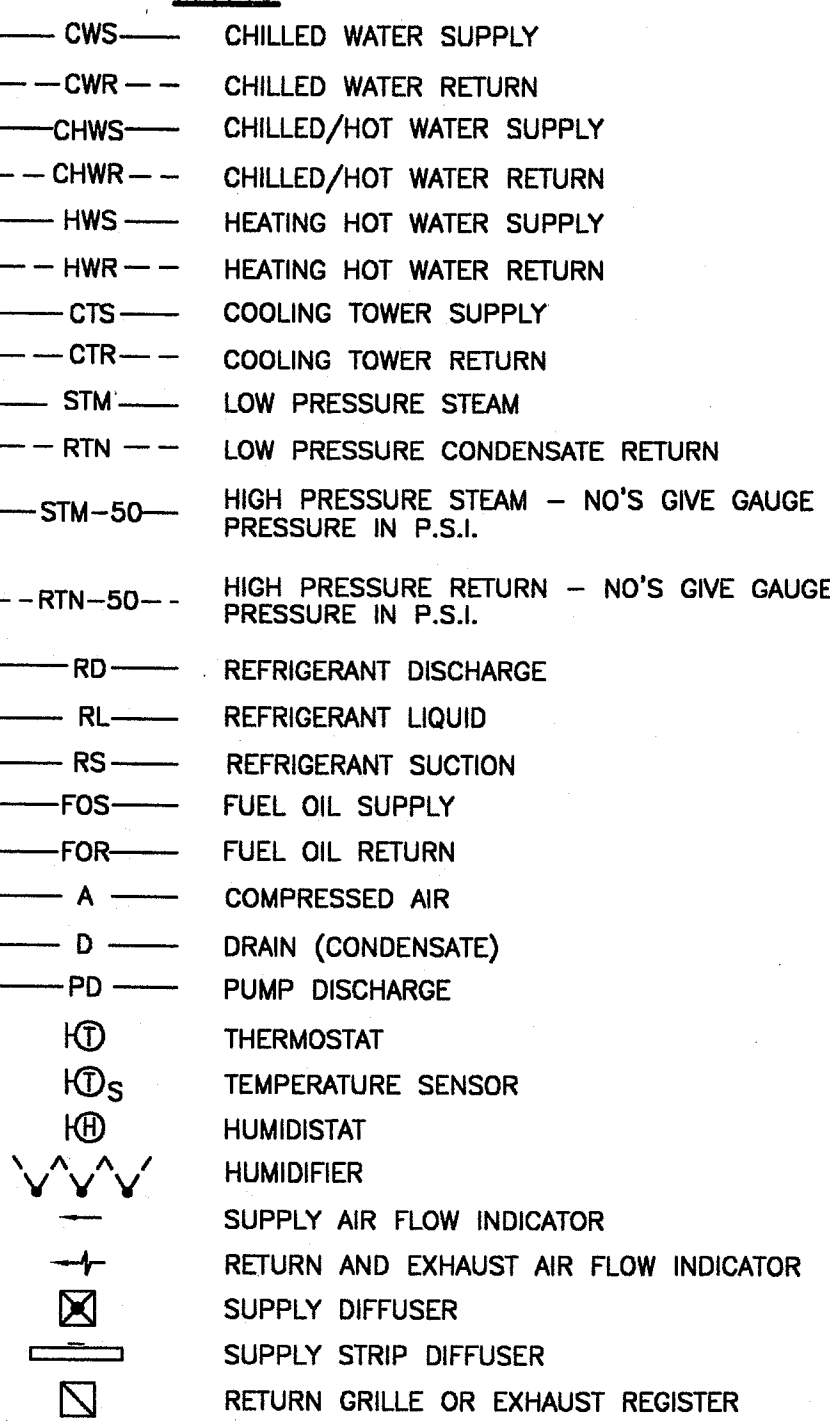
FIRE PROTECTION



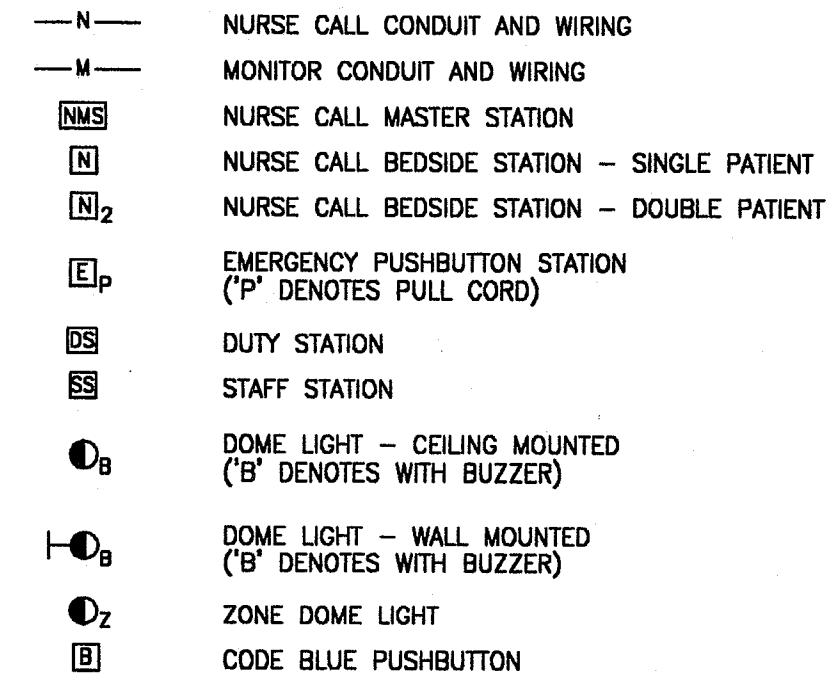
MEDICAL GAS



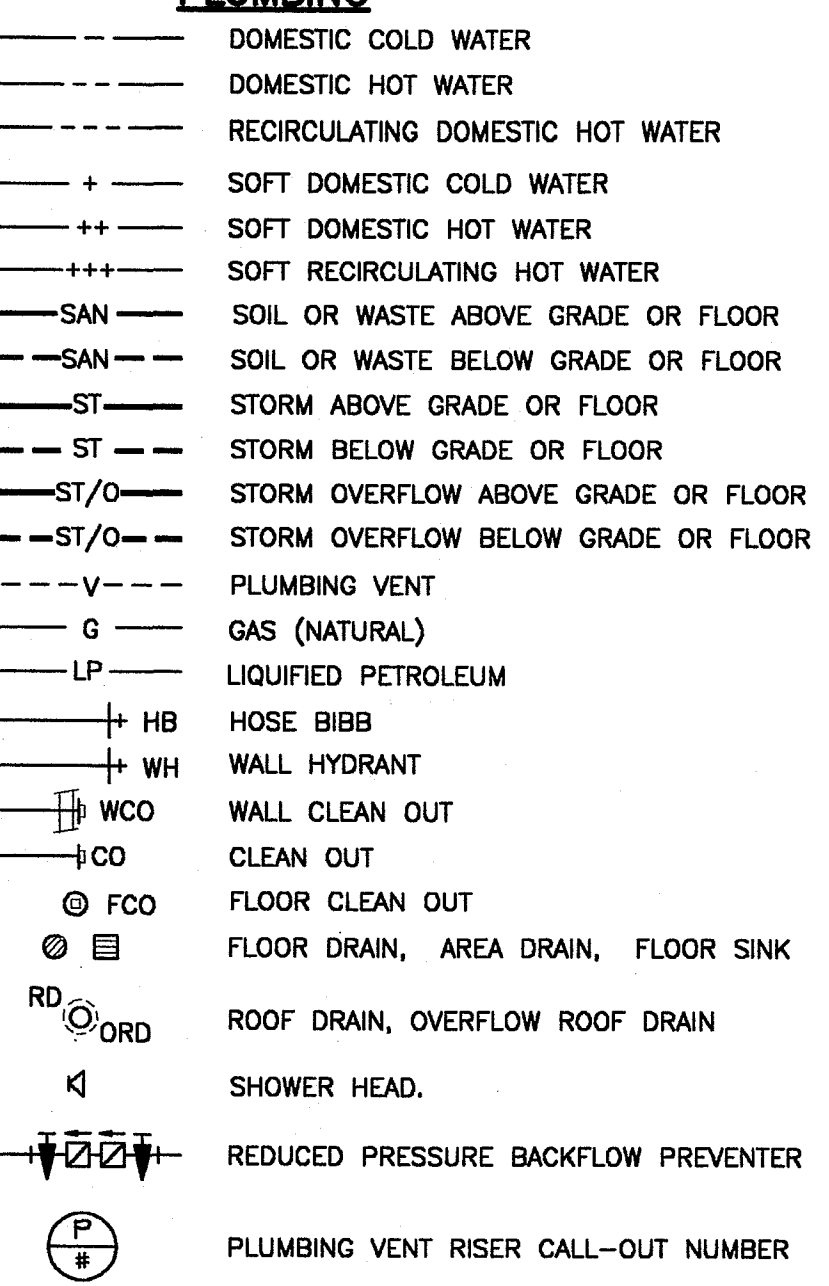
HVAC



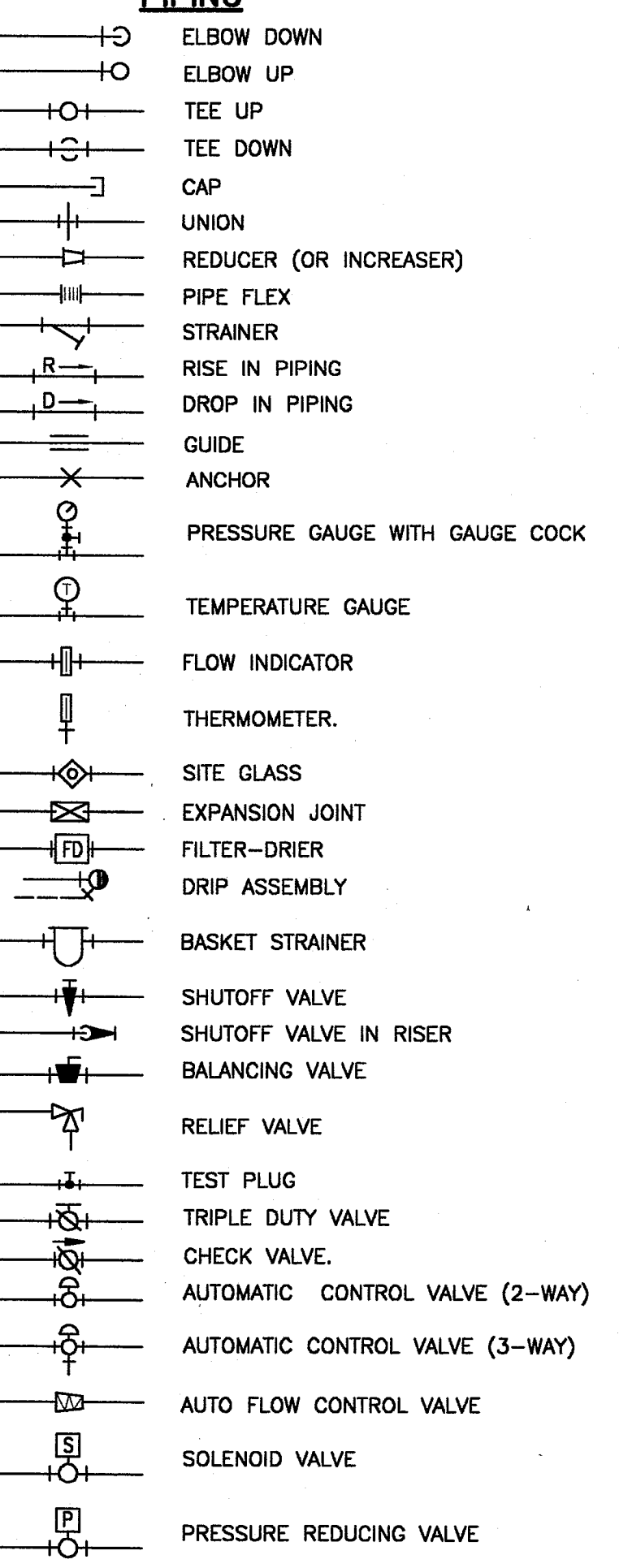
HOSPITAL



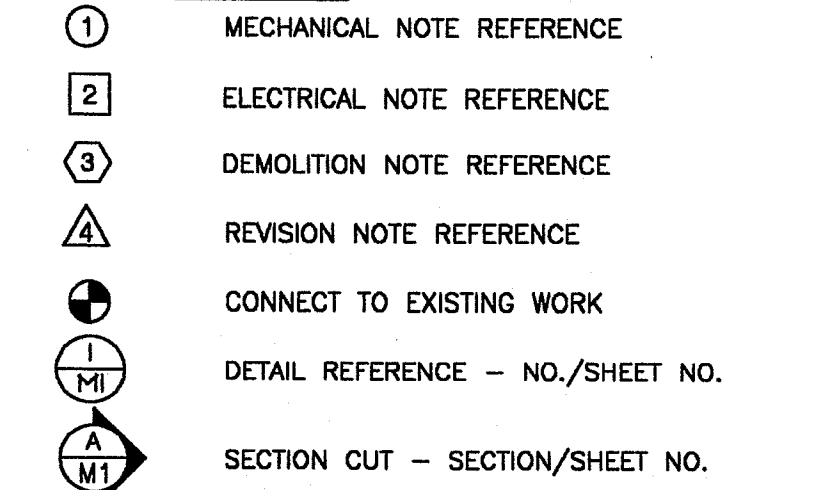
PLUMBING



PIPING



GENERAL



DUCTWORK

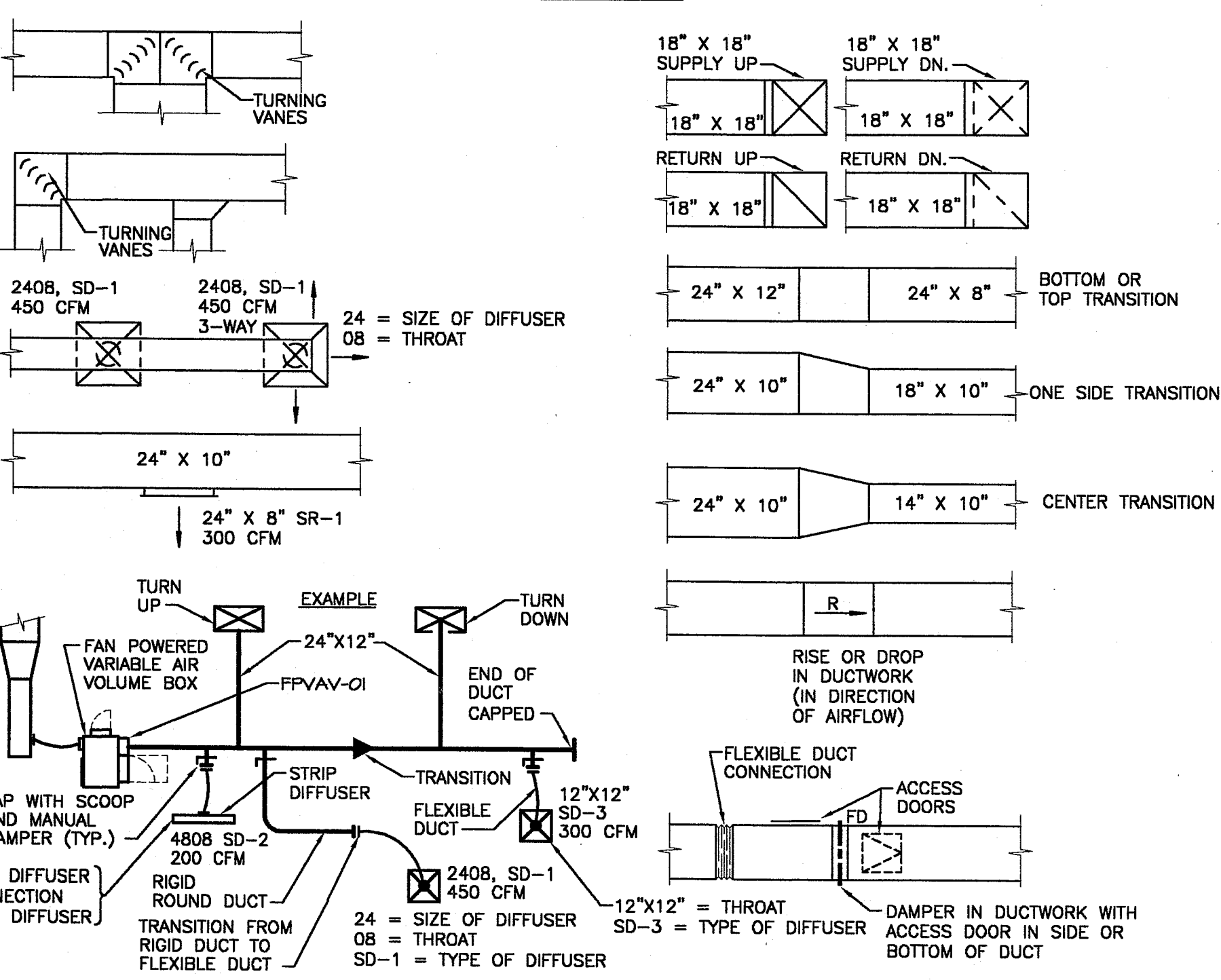


Table of abbreviations and symbols for Mechanical and Electrical systems, including A/C, HVAC, Plumbing, Piping, Fire Alarm, Fire Protection, Medical Gas, Hospital, and General symbols.

MECHANICAL AND ELECTRICAL SYMBOLS AND ABBREVIATIONS

SOME SYMBOLS AND ABBREVIATIONS ON THIS LEGEND MAY NOT BE USED. REFER TO FLOOR PLANS FOR ALL SYMBOLS AND ABBREVIATIONS.

SMITH & BOUCHER, INC. CONSULTING ENGINEERS 8620 WEST 110TH STREET OVERLAND PARK, KANSAS 66210 (913) 345-2127 (913) 345-0617 (FAX)

PROJECT NUMBER: 9821402 DRAWING FILE NAME: 9821402.DWG OPERATOR INITIALS: PJP 12-11-98 12-7-98