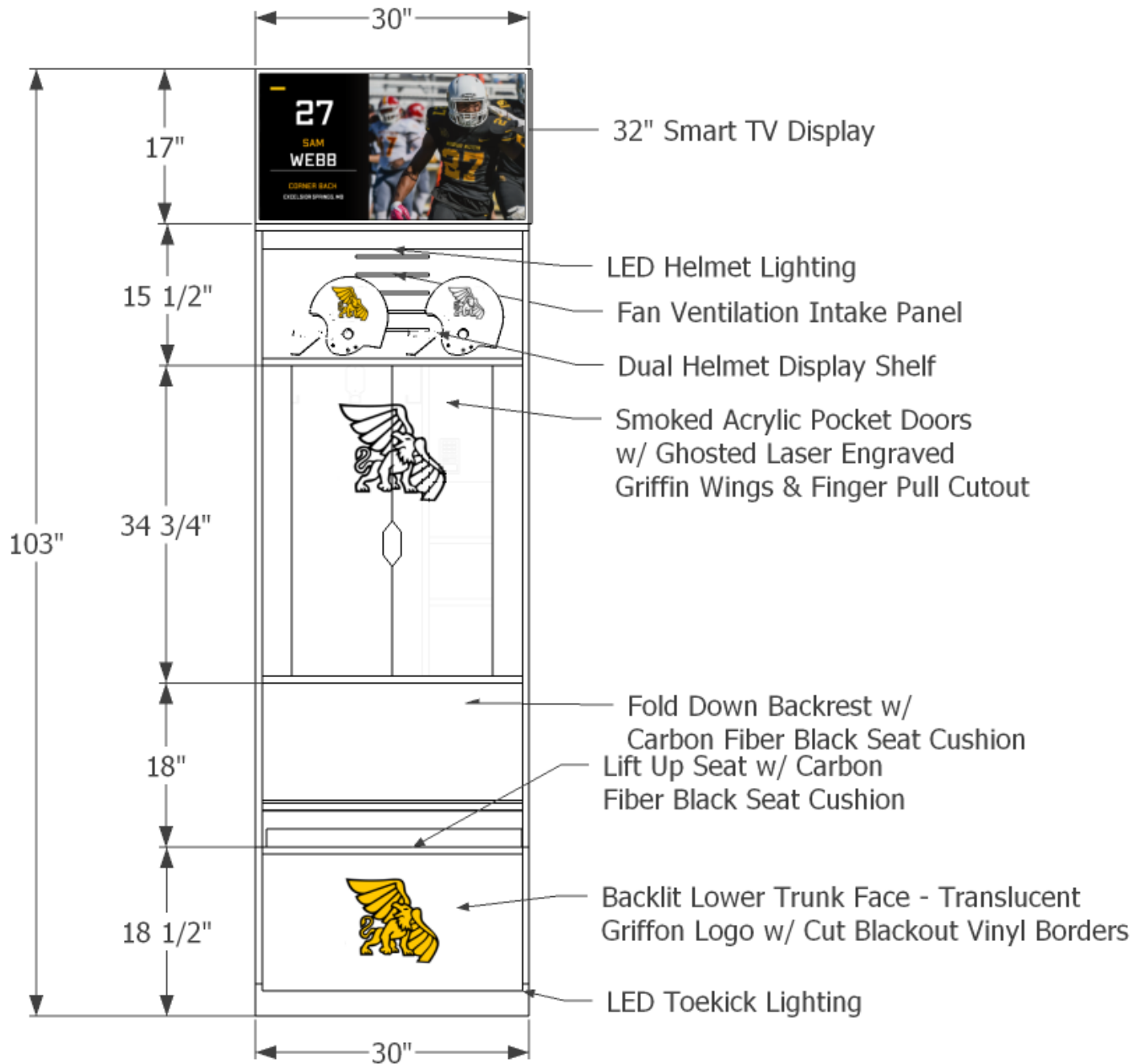




MISSOURI WESTERN STATE UNIVERSITY FOOTBALL LOCKER ROOM RENOVATION





MISSOURI WESTERN
STATE UNIVERSITY

ST. JOSEPH, MO

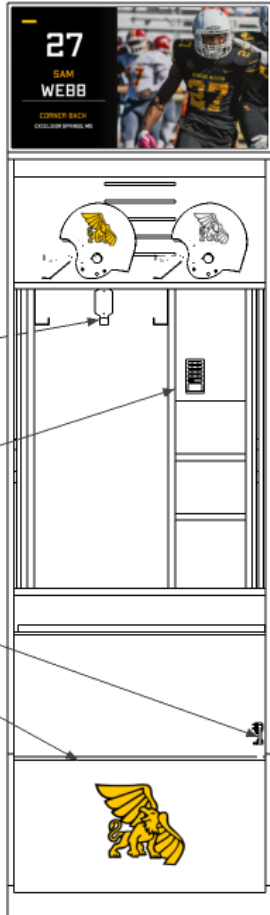
These drawings are a
representation of ideas
expressed by Missouri
Western State University

Final drawings must be
reviewed and approved, in
accordance with the latest
quote, before production of
services will commence.

Print Date: 5/25/2022

Sheet: 2

1 ELEVATION CLOSED

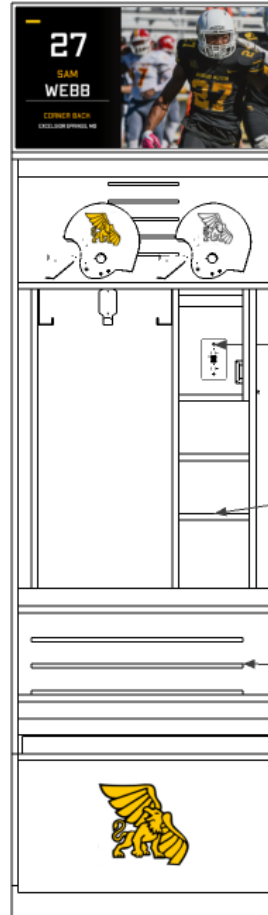


Stainless Steel Hooks (3)

Lockbox w/ Digital Lock

Heavy Duty Lid Stay

Fan Ventilated Trunk Storage



Dual USB + Duplex Outlet

Interior Shelving

Fan Ventilated Gear Storage Behind Backrest



MISSOURI WESTERN STATE UNIVERSITY

ST. JOSEPH, MO

These drawings are a representation of ideas expressed by Missouri Western State University

Final drawings must be reviewed and approved, in accordance with the latest quote, before production of services will commence.

Print Date: 5/25/2022

Sheet: 3

2 ELEVATION OPEN



MISSOURI WESTERN
STATE UNIVERSITY

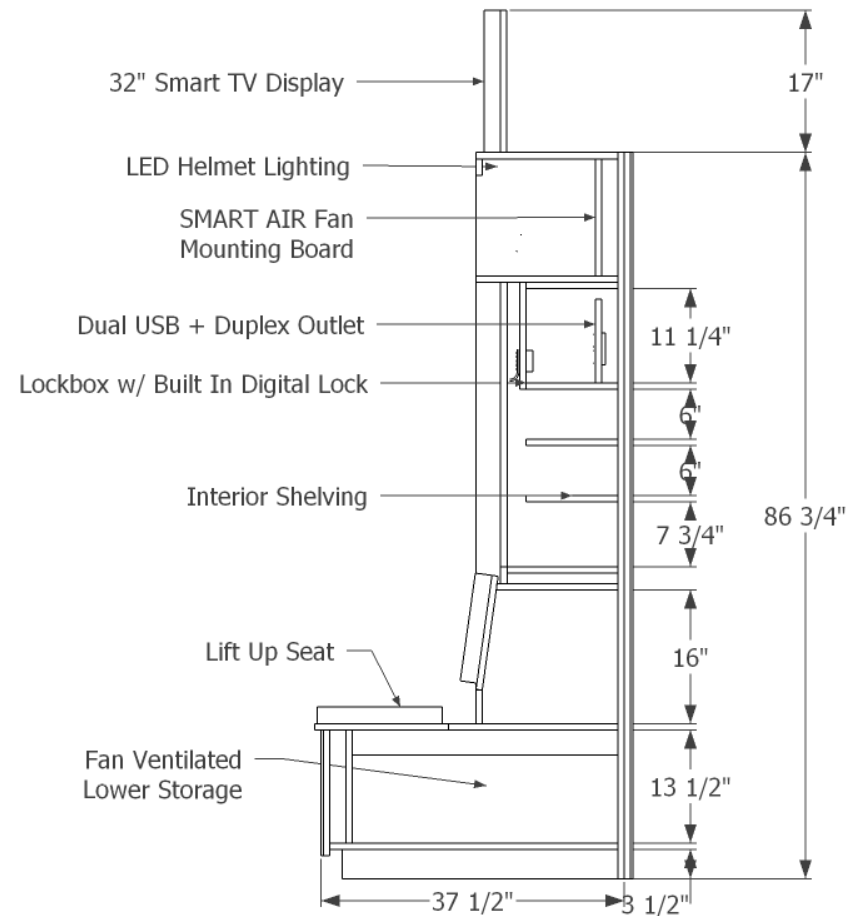
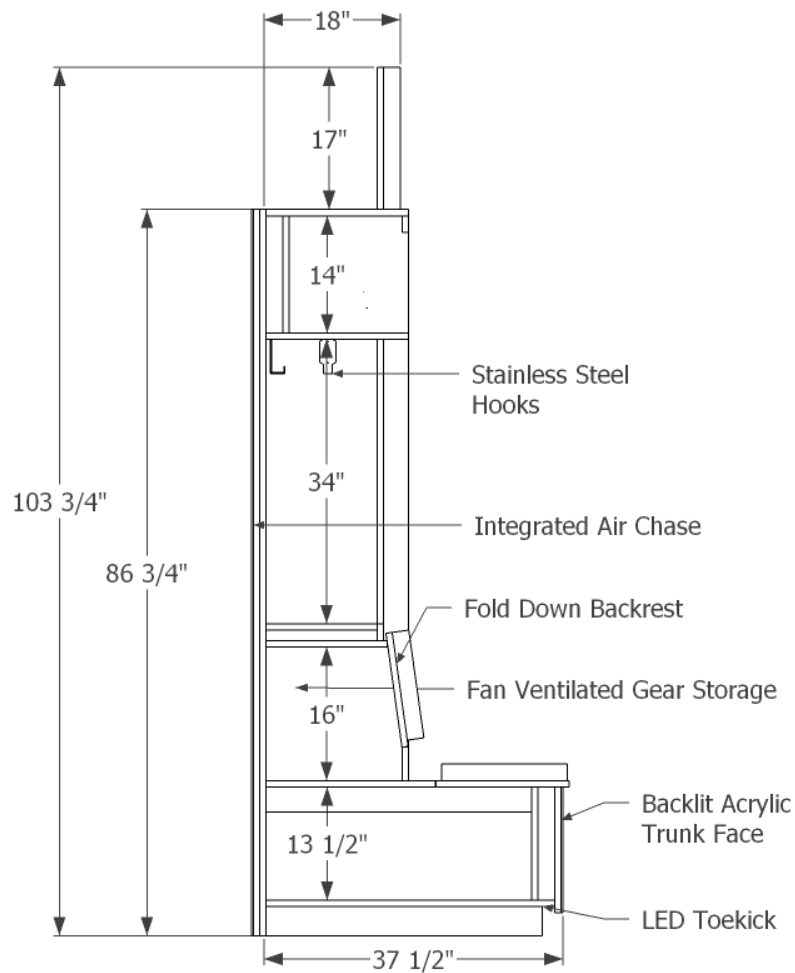
ST. JOSEPH, MO

These drawings are a
representation of ideas
expressed by Missouri
Western State University

Final drawings must be
reviewed and approved, in
accordance with the latest
quote, before production of
services will commence.

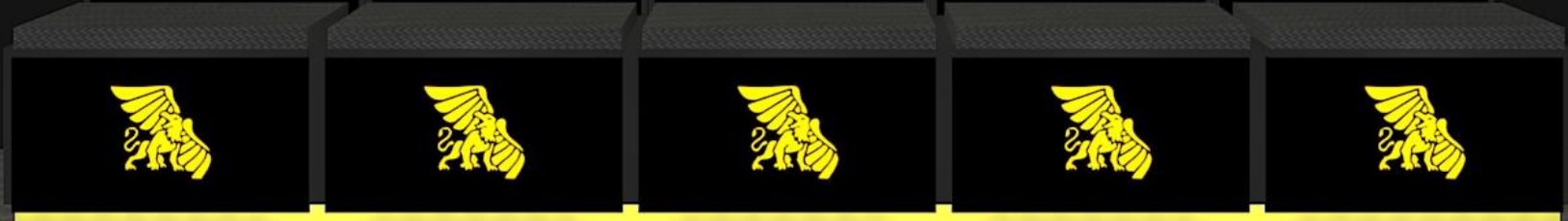
Print Date: 5/25/2022

Sheet: 4



3

SECTIONS



MISSOURI WESTERN
STATE UNIVERSITY

ST. JOSEPH, MO

These drawings are a
representation of ideas
expressed by Missouri
Western State University

Final drawings must be
reviewed and approved, in
accordance with the latest
quote, before production of
services will commence.

Print Date: 5/25/2022

4

ELEVATION ROW RENDER

Sheet: 5



MISSOURI WESTERN
STATE UNIVERSITY

ST. JOSEPH, MO

These drawings are a
representation of ideas
expressed by Missouri
Western State University

Final drawings must be
reviewed and approved, in
accordance with the latest
quote, before production of
services will commence.

Print Date: 5/25/2022

5

AXON ROW RENDER

Sheet: 6



MISSOURI WESTERN
STATE UNIVERSITY

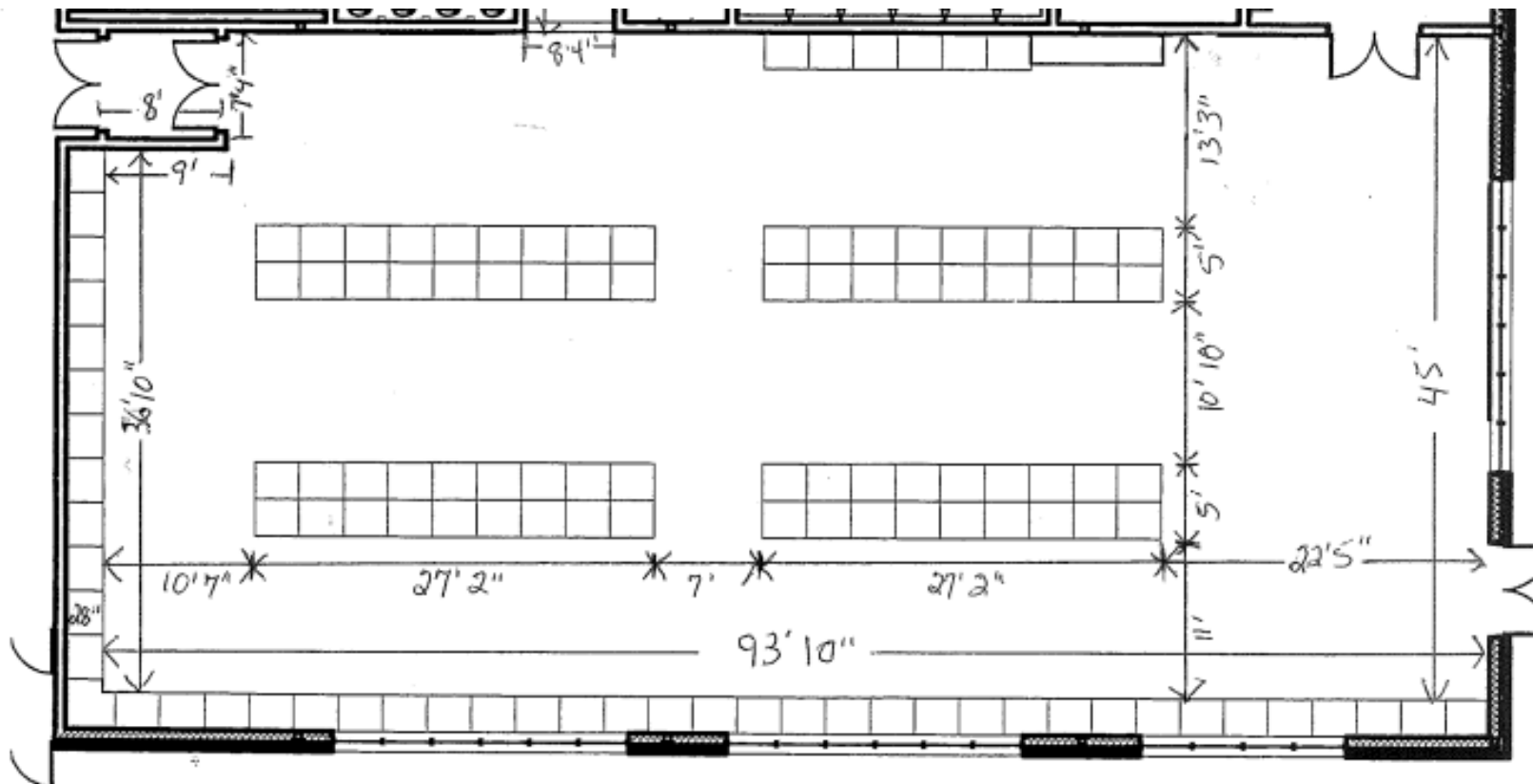
ST. JOSEPH, MO

These drawings are a
representation of ideas
expressed by Missouri
Western State University

Final drawings must be
reviewed and approved, in
accordance with the latest
quote, before production of
services will commence.

Print Date: 5/25/2022





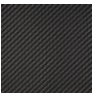
Sheet: 7



6

CURRENT LOCKER ROOM LAYOUT & DIMENSIONS

LOCKER FINISH LEGEND & CONSTRUCTION DETAILS

FINISH NAME	FINISH DESCRIPTION	SUBSTRATE	LOCATION(S)				
	Kendall Charcoal	Grey MATADOR Conversion Varnish & Sealer Finish Match Benjamin Moore paint HC-166 Kendall Charcoal	$\frac{3}{4}$ " Veneer Ultracore Panel	Locker Sides, Tops, Bottoms, Seat Lid, Backrest, Door Stiles, Toekick Base, Lock Box Door & All Interior Shelves/Partitions/Components			
	Smoked Acrylic	$\frac{1}{4}$ " Thick Black Smoked Acrylic Panel w/ Custom Lasered Graphic	$\frac{1}{4}$ " Smoked Black Acrylic Panel	Locker Pocket Doors			
	Black Acrylic	$\frac{1}{4}$ " Thick Black Opaque Acrylic Panel w/ Custom Translucent Graphic	$\frac{1}{4}$ " Black Acrylic Panel	Lower Trunk Face			
	Carbon Fiber Black Vinyl	Textured Marine Grade Vinyl Fabric	N/A	Padded Seat & Backrest			
ADDITIONAL CONSTRUCTION NOTES / DETAILS				MISSOURI WESTERN STATE UNIVERSITY			
<ol style="list-style-type: none"> 1. Locker to be fabricated as a single unit. No multiple part construction allowed. Electrical Components to be wired to single point within locker for final connections. 2. NO MDF, Particleboard, or Laminate finishes will be accepted. All locker body components to be $\frac{3}{4}$" veneer Ultracore wood panels. 3. NO substitution for MATADOR Conversion Finish allowed. 4. Locker to feature 3 fan ventilated compartments SERVICED BY 1 FAN. Active drying w/air blowing through the designated compartment. NO backing up to ductwork. 5. Hardware accessory specifications are as follows: <ol style="list-style-type: none"> 1. Digital Lock: Digilock Range – Oval Body OR Digilock Axis Vertical Mount – Black Finish. Must supply 2 sets of manager/programming keys. 2. Dual USB + Duplex Outlet – LEVITON USB Charger/Duplex Tamper Resistant Receptacle T5632 – BLACK 3. Seat Pad – 2" High Density foam pad on $\frac{3}{4}$" thick wood panel. Marine grade vinyl wrap w minimum 250,000 double rub count. Carbon Fiber Black Design 4. LED Lights – Continuous YELLOW LED light strip at Toe kick and in upper open storage area. White LED Light Pad for consistent & even lighting at backlit acrylic trunk face. 6. Locker manufacturer to supply SMART TV Displays, and turnkey full installation as part of scope. 7. Minimum 8 year warranty from completed installation. Lifetime warranty on parts and labor for fan ventilation system. 8. QTY of 122 Lockers 				ST. JOSEPH, MO			
				These drawings are a representation of ideas expressed by Missouri Western State University			
				Final drawings must be reviewed and approved, in accordance with the latest quote, before production of services will commence.			
				Print Date: 5/25/2022			
Sheet: 8							