

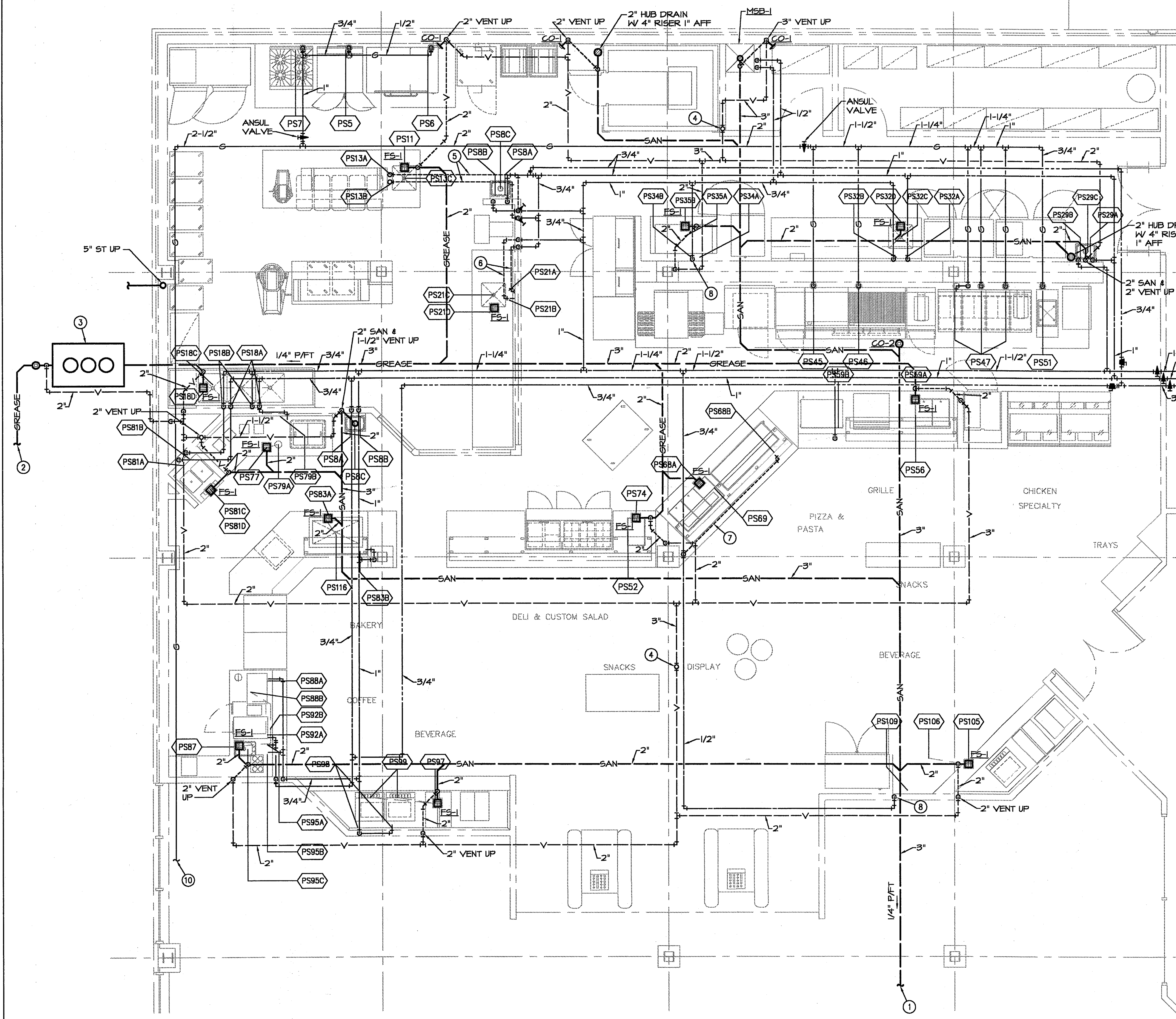
**ELLISON-AUXIER
ARCHITECTS, INC.**

924 FRANCIS ST. JOSEPH, MO 64501 (816) 233-8003 FAX 233-7793

PROJECT: PROPOSED RENOVATIONS
STUDENT UNION
MISSOURI WESTERN STATE COLLEGE
4525 DOWNS DRIVE
SAINT JOSEPH, MISSOURI

SHEET: M11
OF: 11
DATE: 12-8-98

PROJECT NAME: MISSOURI WESTERN STATE COLLEGE STUDENT UNION
CADD DRAWING FILE NAME: 9202M11.DWG
PLOTTED SHEET NAME/NUMBER: M11-
LAST CORRECTION DATE: 12-1-98
PLOT DATE: 10-27-98



| | | | | | | | |
|------|---|--------|---|-------|---|--------|--|
| PS5 | (2) 3/4" GAS LINE 60000 BTU EACH 1/2" (1/4" AFF) IN WALL FOR OVENS F5EG TO PROVIDE QUICK DISCONNECT HOSE DIV.5 TO VERIFY ALL REQUIREMENTS OF EXISTING EQUIPMENT PRIOR TO ROUGH-IN | PS21B | 1/2" COLD WATER 1/2" AFF IN WALL FOR SINK DIV.5 TO RUN FROM WALL TO EQUIPMENT | PS51 | 3/4" GAS LINE 80000 BTU 1/2" (1/4" AFF) IN WALL FOR PRESSURE FRYER F5EG TO PROVIDE QUICK DISCONNECT HOSE | PS45A | 1/2" HOT WATER 1/2" AFF SUB-UP FOR SINK DIV.5 TO RUN FROM SUB-UP TO EQUIPMENT |
| PS6 | 1" GAS LINE 110000 BTU 1/4" AFF IN WALL FOR DECK OVENS F5 EG TO PROVIDE QUICK DISCONNECT HOSE | PS21C | 2" INDIRECT WASTE FOR SINK DIV.5 TO RUN FROM WALL TO FLOOR SINK | PS52 | 1" INDIRECT WASTE FOR HOT MELL DIV.5 TO RUN FROM EQUIPMENT TO FLOOR SINK | PS45B | 1/2" COLD WATER 1/4" AFF SUB-UP FOR SINK DIV.5 TO RUN FROM SUB-UP TO EQUIPMENT |
| PS7 | 3/4" GAS LINE 120000 BTU 1/4" AFF IN WALL FOR 4 BURNER RANGE F5EG TO PROVIDE QUICK DISCONNECT HOSE | PS21D | 1/2" COLD WATER 1/2" AFF IN WALL FOR HAND SINK DIV.5 TO RUN FROM WALL TO FAUCET | PS56 | 1" INDIRECT WASTE FOR HOT HELLS DIV.5 TO RUN FROM EQUIPMENT TO FLOOR SINK | PS45C | 1/2" COLD WATER 1/2" AFF IN WALL FOR CARBONATORS DIV.5 TO RUN FROM WALL TO EQUIPMENT |
| PS8A | 2 1/2" HOT WATER 1/2" AFF IN WALL FOR HAND SINK DIV.5 TO RUN FROM WALL TO FAUCET | PS21E | 1/2" COLD WATER 1/2" AFF IN WALL FOR HAND SINK DIV.5 TO RUN FROM WALL TO FAUCET | PS58A | 1/2" COLD WATER 24" AFF IN COUNTER BASE FOR FUTURE USE DIV.5 TO CAP UNDER COUNTER FLOOR SINK | PS45D | 1/2" COLD WATER 24" AFF IN COUNTER BASE FOR FUTURE USE DIV.5 TO CAP UNDER COUNTER FLOOR SINK |
| PS8B | 2 1/2" COLD WATER 1/2" AFF IN WALL FOR HAND SINK DIV.5 TO RUN FROM WALL TO FAUCET | PS21F | 1/2" COLD WATER 1/2" AFF IN WALL FOR HAND SINK DIV.5 TO RUN FROM WALL TO FAUCET | PS58B | 1/2" COLD WATER 24" AFF IN COUNTER BASE FOR FUTURE USE DIV.5 TO CAP UNDER COUNTER FLOOR SINK | PS45E | 1/2" COLD WATER 24" AFF IN COUNTER BASE FOR FUTURE USE DIV.5 TO CAP UNDER COUNTER FLOOR SINK |
| PS8C | 2" 2" INDIRECT WASTE FOR SINK DIV.5 TO RUN FROM EQUIPMENT TO WALL | PS21G | 1/2" COLD WATER 1/2" AFF IN WALL FOR HAND SINK DIV.5 TO RUN FROM WALL TO FAUCET | PS58C | 1/2" COLD WATER 24" AFF IN COUNTER BASE FOR FUTURE USE DIV.5 TO CAP UNDER COUNTER FLOOR SINK | PS45F | 1/2" COLD WATER 24" AFF IN COUNTER BASE FOR FUTURE USE DIV.5 TO CAP UNDER COUNTER FLOOR SINK |
| PS8D | 1/2" COLD WATER 1/2" AFF SUB-UP FOR SINK DIV.5 TO RUN FROM SUB-UP THROUGH COUNTER TO FAUCET | PS21H | 1/2" COLD WATER 1/2" AFF IN WALL FOR HAND SINK DIV.5 TO RUN FROM WALL TO FAUCET | PS58D | 1/2" COLD WATER 24" AFF IN COUNTER BASE FOR FUTURE USE DIV.5 TO CAP UNDER COUNTER FLOOR SINK | PS45G | 1/2" COLD WATER 24" AFF IN COUNTER BASE FOR FUTURE USE DIV.5 TO CAP UNDER COUNTER FLOOR SINK |
| PS8E | 2" 2" INDIRECT WASTE FOR SINK DIV.5 TO RUN FROM EQUIPMENT TO FLOOR SINK | PS21I | 1/2" COLD WATER 1/2" AFF IN WALL FOR HAND SINK DIV.5 TO RUN FROM WALL TO FAUCET | PS58E | 1/2" COLD WATER 24" AFF IN COUNTER BASE FOR FUTURE USE DIV.5 TO CAP UNDER COUNTER FLOOR SINK | PS45H | 1/2" COLD WATER 24" AFF IN COUNTER BASE FOR FUTURE USE DIV.5 TO CAP UNDER COUNTER FLOOR SINK |
| PS8F | 1/2" COLD WATER 1/2" AFF IN WALL FOR 3 COMPARTMENT SINK DIV.5 TO RUN FROM WALL TO EQUIPMENT | PS21J | 1/2" COLD WATER 1/2" AFF IN WALL FOR HAND SINK DIV.5 TO RUN FROM WALL TO FAUCET | PS58F | 1/2" COLD WATER 24" AFF IN COUNTER BASE FOR FUTURE USE DIV.5 TO CAP UNDER COUNTER FLOOR SINK | PS45I | 1/2" COLD WATER 24" AFF IN COUNTER BASE FOR FUTURE USE DIV.5 TO CAP UNDER COUNTER FLOOR SINK |
| PS8G | (2) 1/2" COLD WATER 1/2" AFF IN WALL FOR 3 COMPARTMENT SINK DIV.5 TO RUN FROM WALL TO EQUIPMENT | PS21K | 1/2" COLD WATER 1/2" AFF IN WALL FOR HAND SINK DIV.5 TO RUN FROM WALL TO FAUCET | PS58G | 1/2" COLD WATER 24" AFF IN COUNTER BASE FOR FUTURE USE DIV.5 TO CAP UNDER COUNTER FLOOR SINK | PS45J | 1/2" COLD WATER 24" AFF IN COUNTER BASE FOR FUTURE USE DIV.5 TO CAP UNDER COUNTER FLOOR SINK |
| PS8H | (2) 1/2" COLD WATER 1/2" AFF IN WALL FOR 3 COMPARTMENT SINK DIV.5 TO RUN FROM WALL TO EQUIPMENT | PS21L | 1/2" COLD WATER 1/2" AFF IN WALL FOR HAND SINK DIV.5 TO RUN FROM WALL TO FAUCET | PS58H | 1/2" COLD WATER 24" AFF IN COUNTER BASE FOR FUTURE USE DIV.5 TO CAP UNDER COUNTER FLOOR SINK | PS45K | 1/2" COLD WATER 24" AFF IN COUNTER BASE FOR FUTURE USE DIV.5 TO CAP UNDER COUNTER FLOOR SINK |
| PS8I | 1/2" COLD WATER 1/2" AFF IN WALL FOR 3 COMPARTMENT SINK DIV.5 TO RUN FROM WALL TO EQUIPMENT | PS21M | 1/2" COLD WATER 1/2" AFF IN WALL FOR HAND SINK DIV.5 TO RUN FROM WALL TO FAUCET | PS58I | 1/2" COLD WATER 24" AFF IN COUNTER BASE FOR FUTURE USE DIV.5 TO CAP UNDER COUNTER FLOOR SINK | PS45L | 1/2" COLD WATER 24" AFF IN COUNTER BASE FOR FUTURE USE DIV.5 TO CAP UNDER COUNTER FLOOR SINK |
| PS8J | (2) 1/2" COLD WATER 1/2" AFF IN WALL FOR 3 COMPARTMENT SINK DIV.5 TO RUN FROM WALL TO EQUIPMENT | PS21N | 1/2" COLD WATER 1/2" AFF IN WALL FOR HAND SINK DIV.5 TO RUN FROM WALL TO FAUCET | PS58J | 1/2" COLD WATER 24" AFF IN COUNTER BASE FOR FUTURE USE DIV.5 TO CAP UNDER COUNTER FLOOR SINK | PS45M | 1/2" COLD WATER 24" AFF IN COUNTER BASE FOR FUTURE USE DIV.5 TO CAP UNDER COUNTER FLOOR SINK |
| PS8K | (2) 1/2" COLD WATER 1/2" AFF IN WALL FOR 3 COMPARTMENT SINK DIV.5 TO RUN FROM WALL TO EQUIPMENT | PS21O | 1/2" COLD WATER 1/2" AFF IN WALL FOR HAND SINK DIV.5 TO RUN FROM WALL TO FAUCET | PS58K | 1/2" COLD WATER 24" AFF IN COUNTER BASE FOR FUTURE USE DIV.5 TO CAP UNDER COUNTER FLOOR SINK | PS45N | 1/2" COLD WATER 24" AFF IN COUNTER BASE FOR FUTURE USE DIV.5 TO CAP UNDER COUNTER FLOOR SINK |
| PS8L | (2) 1/2" COLD WATER 1/2" AFF IN WALL FOR 3 COMPARTMENT SINK DIV.5 TO RUN FROM WALL TO EQUIPMENT | PS21P | 1/2" COLD WATER 1/2" AFF IN WALL FOR HAND SINK DIV.5 TO RUN FROM WALL TO FAUCET | PS58L | 1/2" COLD WATER 24" AFF IN COUNTER BASE FOR FUTURE USE DIV.5 TO CAP UNDER COUNTER FLOOR SINK | PS45O | 1/2" COLD WATER 24" AFF IN COUNTER BASE FOR FUTURE USE DIV.5 TO CAP UNDER COUNTER FLOOR SINK |
| PS8M | (2) 1/2" COLD WATER 1/2" AFF IN WALL FOR 3 COMPARTMENT SINK DIV.5 TO RUN FROM WALL TO EQUIPMENT | PS21Q | 1/2" COLD WATER 1/2" AFF IN WALL FOR HAND SINK DIV.5 TO RUN FROM WALL TO FAUCET | PS58M | 1/2" COLD WATER 24" AFF IN COUNTER BASE FOR FUTURE USE DIV.5 TO CAP UNDER COUNTER FLOOR SINK | PS45P | 1/2" COLD WATER 24" AFF IN COUNTER BASE FOR FUTURE USE DIV.5 TO CAP UNDER COUNTER FLOOR SINK |
| PS8N | (2) 1/2" COLD WATER 1/2" AFF IN WALL FOR 3 COMPARTMENT SINK DIV.5 TO RUN FROM WALL TO EQUIPMENT | PS21R | 1/2" COLD WATER 1/2" AFF IN WALL FOR HAND SINK DIV.5 TO RUN FROM WALL TO FAUCET | PS58N | 1/2" COLD WATER 24" AFF IN COUNTER BASE FOR FUTURE USE DIV.5 TO CAP UNDER COUNTER FLOOR SINK | PS45Q | 1/2" COLD WATER 24" AFF IN COUNTER BASE FOR FUTURE USE DIV.5 TO CAP UNDER COUNTER FLOOR SINK |
| PS8O | (2) 1/2" COLD WATER 1/2" AFF IN WALL FOR 3 COMPARTMENT SINK DIV.5 TO RUN FROM WALL TO EQUIPMENT | PS21S | 1/2" COLD WATER 1/2" AFF IN WALL FOR HAND SINK DIV.5 TO RUN FROM WALL TO FAUCET | PS58O | 1/2" COLD WATER 24" AFF IN COUNTER BASE FOR FUTURE USE DIV.5 TO CAP UNDER COUNTER FLOOR SINK | PS45R | 1/2" COLD WATER 24" AFF IN COUNTER BASE FOR FUTURE USE DIV.5 TO CAP UNDER COUNTER FLOOR SINK |
| PS8P | (2) 1/2" COLD WATER 1/2" AFF IN WALL FOR 3 COMPARTMENT SINK DIV.5 TO RUN FROM WALL TO EQUIPMENT | PS21T | 1/2" COLD WATER 1/2" AFF IN WALL FOR HAND SINK DIV.5 TO RUN FROM WALL TO FAUCET | PS58P | 1/2" COLD WATER 24" AFF IN COUNTER BASE FOR FUTURE USE DIV.5 TO CAP UNDER COUNTER FLOOR SINK | PS45S | 1/2" COLD WATER 24" AFF IN COUNTER BASE FOR FUTURE USE DIV.5 TO CAP UNDER COUNTER FLOOR SINK |
| PS8Q | (2) 1/2" COLD WATER 1/2" AFF IN WALL FOR 3 COMPARTMENT SINK DIV.5 TO RUN FROM WALL TO EQUIPMENT | PS21U | 1/2" COLD WATER 1/2" AFF IN WALL FOR HAND SINK DIV.5 TO RUN FROM WALL TO FAUCET | PS58Q | 1/2" COLD WATER 24" AFF IN COUNTER BASE FOR FUTURE USE DIV.5 TO CAP UNDER COUNTER FLOOR SINK | PS45T | 1/2" COLD WATER 24" AFF IN COUNTER BASE FOR FUTURE USE DIV.5 TO CAP UNDER COUNTER FLOOR SINK |
| PS8R | (2) 1/2" COLD WATER 1/2" AFF IN WALL FOR 3 COMPARTMENT SINK DIV.5 TO RUN FROM WALL TO EQUIPMENT | PS21V | 1/2" COLD WATER 1/2" AFF IN WALL FOR HAND SINK DIV.5 TO RUN FROM WALL TO FAUCET | PS58R | 1/2" COLD WATER 24" AFF IN COUNTER BASE FOR FUTURE USE DIV.5 TO CAP UNDER COUNTER FLOOR SINK | PS45U | 1/2" COLD WATER 24" AFF IN COUNTER BASE FOR FUTURE USE DIV.5 TO CAP UNDER COUNTER FLOOR SINK |
| PS8S | (2) 1/2" COLD WATER 1/2" AFF IN WALL FOR 3 COMPARTMENT SINK DIV.5 TO RUN FROM WALL TO EQUIPMENT | PS21W | 1/2" COLD WATER 1/2" AFF IN WALL FOR HAND SINK DIV.5 TO RUN FROM WALL TO FAUCET | PS58S | 1/2" COLD WATER 24" AFF IN COUNTER BASE FOR FUTURE USE DIV.5 TO CAP UNDER COUNTER FLOOR SINK | PS45V | 1/2" COLD WATER 24" AFF IN COUNTER BASE FOR FUTURE USE DIV.5 TO CAP UNDER COUNTER FLOOR SINK |
| PS8T | (2) 1/2" COLD WATER 1/2" AFF IN WALL FOR 3 COMPARTMENT SINK DIV.5 TO RUN FROM WALL TO EQUIPMENT | PS21X | 1/2" COLD WATER 1/2" AFF IN WALL FOR HAND SINK DIV.5 TO RUN FROM WALL TO FAUCET | PS58T | 1/2" COLD WATER 24" AFF IN COUNTER BASE FOR FUTURE USE DIV.5 TO CAP UNDER COUNTER FLOOR SINK | PS45W | 1/2" COLD WATER 24" AFF IN COUNTER BASE FOR FUTURE USE DIV.5 TO CAP UNDER COUNTER FLOOR SINK |
| PS8U | (2) 1/2" COLD WATER 1/2" AFF IN WALL FOR 3 COMPARTMENT SINK DIV.5 TO RUN FROM WALL TO EQUIPMENT | PS21Y | 1/2" COLD WATER 1/2" AFF IN WALL FOR HAND SINK DIV.5 TO RUN FROM WALL TO FAUCET | PS58U | 1/2" COLD WATER 24" AFF IN COUNTER BASE FOR FUTURE USE DIV.5 TO CAP UNDER COUNTER FLOOR SINK | PS45X | 1/2" COLD WATER 24" AFF IN COUNTER BASE FOR FUTURE USE DIV.5 TO CAP UNDER COUNTER FLOOR SINK |
| PS8V | (2) 1/2" COLD WATER 1/2" AFF IN WALL FOR 3 COMPARTMENT SINK DIV.5 TO RUN FROM WALL TO EQUIPMENT | PS21Z | 1/2" COLD WATER 1/2" AFF IN WALL FOR HAND SINK DIV.5 TO RUN FROM WALL TO FAUCET | PS58V | 1/2" COLD WATER 24" AFF IN COUNTER BASE FOR FUTURE USE DIV.5 TO CAP UNDER COUNTER FLOOR SINK | PS45Y | 1/2" COLD WATER 24" AFF IN COUNTER BASE FOR FUTURE USE DIV.5 TO CAP UNDER COUNTER FLOOR SINK |
| PS8W | (2) 1/2" COLD WATER 1/2" AFF IN WALL FOR 3 COMPARTMENT SINK DIV.5 TO RUN FROM WALL TO EQUIPMENT | PS21AA | 1/2" COLD WATER 1/2" AFF IN WALL FOR HAND SINK DIV.5 TO RUN FROM WALL TO FAUCET | PS58W | 1/2" COLD WATER 24" AFF IN COUNTER BASE FOR FUTURE USE DIV.5 TO CAP UNDER COUNTER FLOOR SINK | PS45Z | 1/2" COLD WATER 24" AFF IN COUNTER BASE FOR FUTURE USE DIV.5 TO CAP UNDER COUNTER FLOOR SINK |
| PS8X | (2) 1/2" COLD WATER 1/2" AFF IN WALL FOR 3 COMPARTMENT SINK DIV.5 TO RUN FROM WALL TO EQUIPMENT | PS21AB | 1/2" COLD WATER 1/2" AFF IN WALL FOR HAND SINK DIV.5 TO RUN FROM WALL TO FAUCET | PS58X | 1/2" COLD WATER 24" AFF IN COUNTER BASE FOR FUTURE USE DIV.5 TO CAP UNDER COUNTER FLOOR SINK | PS45AA | 1/2" COLD WATER 24" AFF IN COUNTER BASE FOR FUTURE USE DIV.5 TO CAP UNDER COUNTER FLOOR SINK |
| PS8Y | (2) 1/2" COLD WATER 1/2" AFF IN WALL FOR 3 COMPARTMENT SINK DIV.5 TO RUN FROM WALL TO EQUIPMENT | PS21AC | 1/2" COLD WATER 1/2" AFF IN WALL FOR HAND SINK DIV.5 TO RUN FROM WALL TO FAUCET | PS58Y | 1/2" COLD WATER 24" AFF IN COUNTER BASE FOR FUTURE USE DIV.5 TO CAP UNDER COUNTER FLOOR SINK | PS45AB | 1/2" COLD WATER 24" AFF IN COUNTER BASE FOR FUTURE USE DIV.5 TO CAP UNDER COUNTER FLOOR SINK |
| PS8Z | (2) 1/2" COLD WATER 1/2" AFF IN WALL FOR 3 COMPARTMENT SINK DIV.5 TO RUN FROM WALL TO EQUIPMENT | PS21AD | 1/2" COLD WATER 1/2" AFF IN WALL FOR HAND SINK DIV.5 TO RUN FROM WALL TO FAUCET | PS58Z | 1/2" COLD WATER 24" AFF IN COUNTER BASE FOR FUTURE USE DIV.5 TO CAP UNDER COUNTER FLOOR SINK | PS45AC | 1/2" COLD WATER 24" AFF IN COUNTER BASE FOR FUTURE USE DIV.5 TO CAP UNDER COUNTER FLOOR SINK |

- PLAN NOTES:**
- SEE SHEET M1 FOR CONTINUATION OF THIS 3" SANITARY DRAIN.
 - SEE THE SITE SHEET FOR CONTINUATION OF THIS 3" GREASE DRAIN.
 - 1000 GALLON PRECAST CONCRETE GREASE INTERCEPTOR. SEE THE GREASE INTERCEPTOR DETAIL ON SHEET M14.
 - SEE SHEET M4 FOR CONTINUATION OF THIS 3" VENT PIPE.
 - THIS 1/2" CW AND HW PIPING IS LOCATED BELOW THE SLAB.
 - MOUNT THIS CW AND HW PIPING BELOW COUNTER.
 - MOUNT THIS CW PIPING BELOW COUNTER.
 - PROVIDE ATMOSPHERIC VACUUM BREAKER. MOUNT A MINIMUM OF 12" ABOVE HIGHEST WATER INLET OR AS REQUIRED BY MANUFACTURER.
 - SEE SHEET M1 FOR CONTINUATION OF THIS DOMESTIC WATER PIPING.
 - SEE SHEET M1 FOR CONTINUATION OF THIS 2-1/2" GAS PIPING.

- GENERAL NOTES:**
- PLUMBING CONTRACTOR TO SEE SHEET F5E-1 FOR FOOD SERVICE EQUIPMENT SCHEDULE.
 - PLUMBING CONTRACTOR TO VERIFY ALL DIMENSIONS FOR F.S. AND H.D. WITH FOOD SERVICE CONTRACTOR.
 - PLUMBING CONTRACTOR TO SEE SHEET F5-4 FOR FOOD SODA LINE SLEEVING REQUIREMENTS.
 - COORDINATE ALL GAS PIPING WITH EXHAUST HOODS DUCT SYSTEM.

NEW FOOD COURT KITCHEN PLAN - MECHANICAL
SCALE: 1/4"=1'-0"

94B #421402
SMITH & BOUCHER, INC.
CONSULTING ENGINEERS
8620 WEST 110TH STREET
OVERLAND PARK, KANSAS 66210
(913) 345-2127
(913) 345-0617 (FAX)