

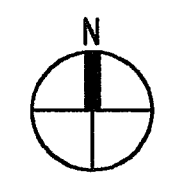
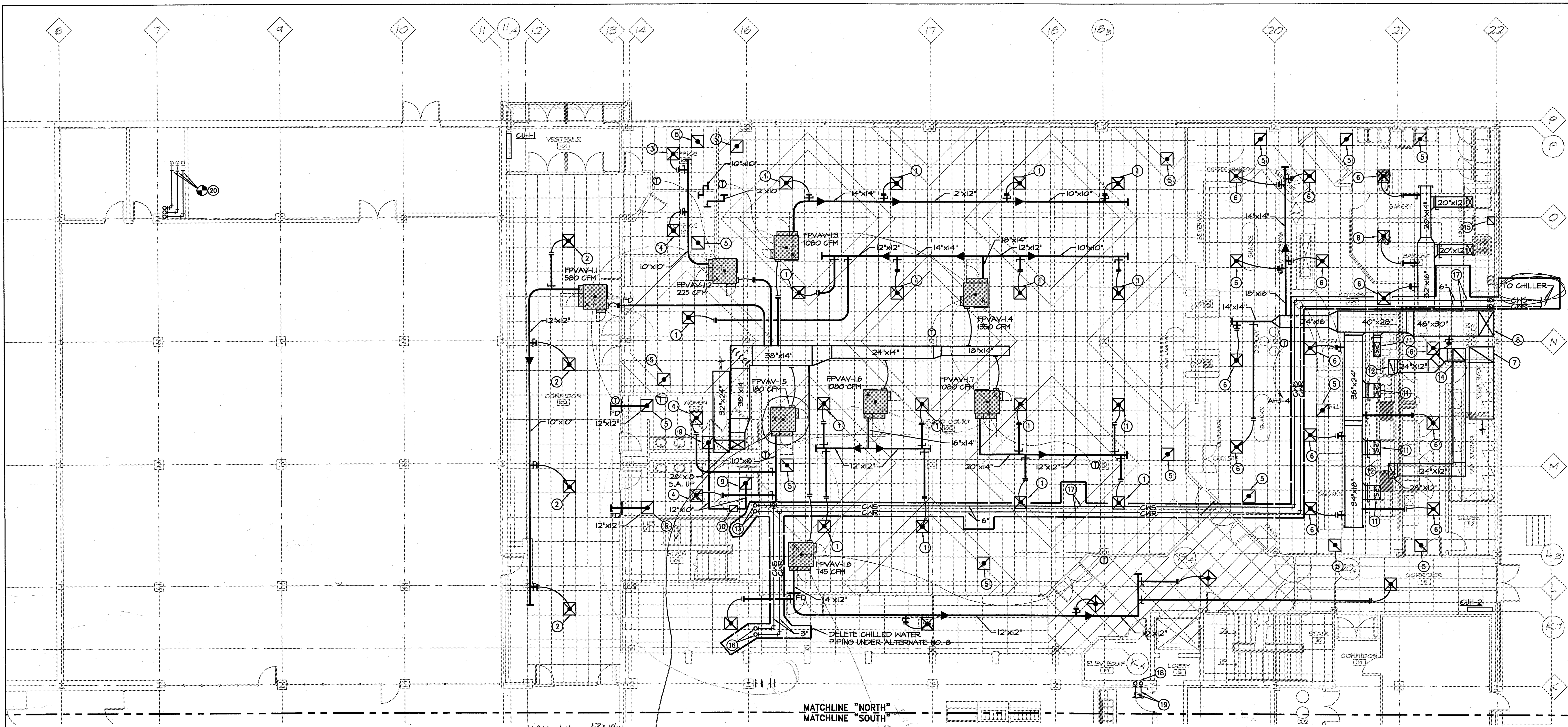


**ELLISON-AUXIER
ARCHITECTS INC.**

924 FRANCIS ST. JOSEPH, MO 64501 (816) 233-8003 FAX 233-7793

PROJECT: PROPOSED RENOVATIONS
STUDENT UNION
MISSOURI WESTERN STATE COLLEGE
4525 DONNS DRIVE
SAINT JOSEPH, MISSOURI

SHEET: M2
OF: 2
DATE: 12-8-98



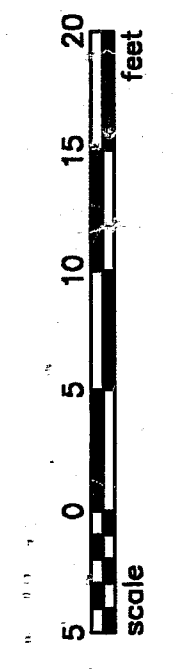
FIRST FLOOR PLAN - HVAC - NORTH
SCALE: 1/8"=1'-0"

- VAV
- 1.1 - 17x14x1
 - 1.2 - " x "
 - 1.5 - " x "
 - 1.8 - " x "
 - 1.6 - " x "
 - 1.7 - " x "
 - 1.4 - " x "
 - 1.3 - " x "

MECHANICAL PLAN NOTES:

- ① 2410, SD-1, 270 CFM.
- ② 2408, SD-1, 145 CFM.
- ③ 2406, SD-1, 135 CFM.
- ④ 2406, SD-1, 90 CFM.
- ⑤ 24"x24", RG-1.
- ⑥ 2412, SD-1, 400 CFM.
- ⑦ 48"x30" R.A. UP.
- ⑧ 48"x30" S.A. UP.
- ⑨ 24"x24" ES-1, 480 CFM.
- ⑩ 16"x12" EA. UP TO EF-2.
- ⑪ 12"x28" S.A. DOWN TO HOOD.
- ⑫ 12"x28" R.A. DOWN TO HOOD.
- ⑬ 6" CWR & CWS UP TO 2ND FLOOR.
- ⑭ 24"x24" EA. UP TO 2ND FLOOR.
- ⑮ 14"x14" EA. UP TO 2ND FLOOR.
- ⑯ 3" CWR & CWS UP TO 2ND FLOOR.
- ⑰ ROUTE PIPING TIGHT TO STRUCTURE.
- ⑱ 4" STM & 2-1/2" RTN UP TO 2ND FLOOR.
- ⑲ 4" STM & 2-1/2" RTN TO PENTHOUSE. REFER TO SHEET M13 FOR CONTINUATION.
- ⑳ CONNECT NEW 1/8" 3/4" AND 5/8" TO EXISTING REFRIGERANT LINES AND EXTEND TO RELOCATED AIR COOLED CONDENSING UNIT ON THE ROOF.

DELETE UNDER ALTERNATE NO. 8



PROJECT NAME: MISSOURI WESTERN STATE COLLEGE
PROJECT NUMBER: 8821902
DATE PLOTTED: 11-2-98
OPERATOR INITIALS: MZ
PLOT DATE: 11-2-98

SMITH & BOUCHER, INC.
CONSULTING ENGINEERS
8620 WEST 110TH STREET
OVERLAND PARK, KANSAS 66210
(913) 345-2127
smith & boucher, inc. (913) 345-0617 (FAX)