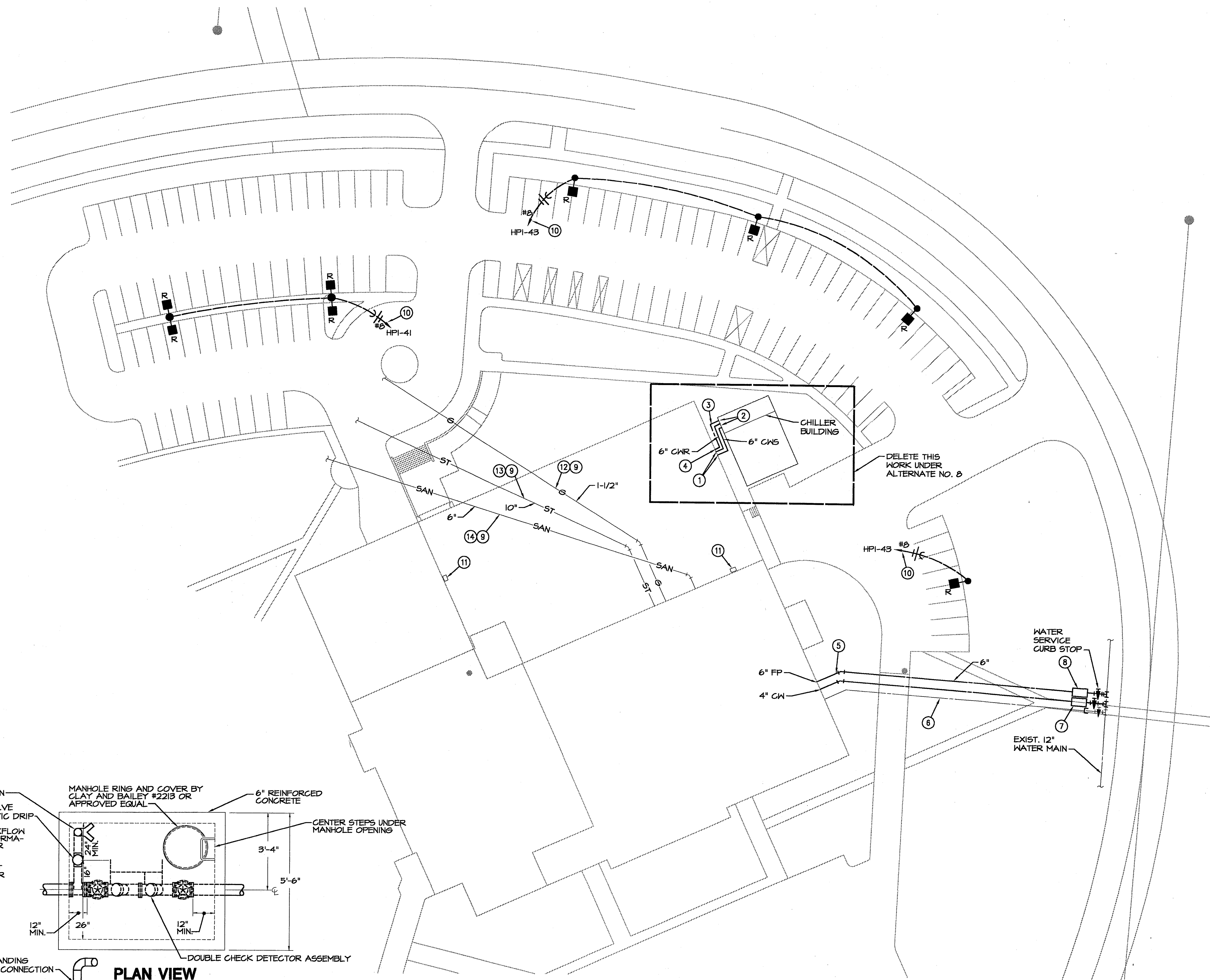


ELLISON-AUXIER ARCHITECTS INC.
 924 FRANCIS ST. JOSEPH, MO 64501 (816) 233-8003 FAX 233-7793

PROJECT: PROPOSED RENOVATIONS
 STUDENT UNION
 MISSOURI WESTERN STATE COLLEGE
 4525 DOWNS DRIVE
 SAINT JOSEPH, MISSOURI

SHEET: ME2

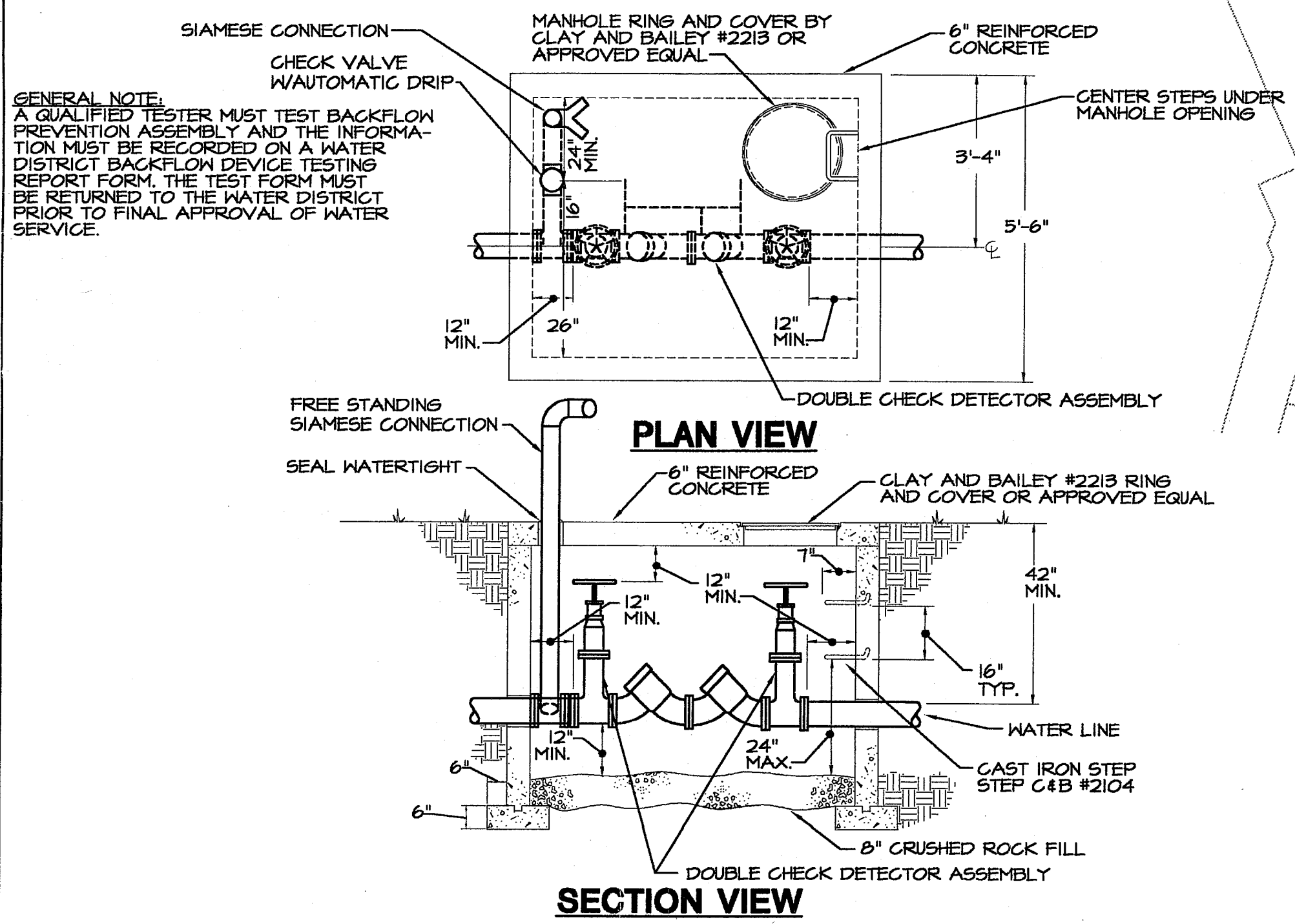
DATE: 12-8-98



- SITE PLAN NOTES:**
- ① 6" CWS AND CWR, SEE SHEET M2 FOR CONTINUATION.
 - ② SEE CHILLER BUILDING FOR CONTINUATION.
 - ③ 1" DOMESTIC COLD WATER FOR SYSTEM MAKE-UP.
 - ④ 1" COLD WATER, SEE PLUMBING FLOOR PLAN FOR CONTINUATION.
 - ⑤ SEE PLUMBING PLANS FOR CONTINUATION. PROVIDE REDUCED PRESSURE BACKFLOW PREVENTER ON DOMESTIC LINE AND DOUBLE CHECK BACKFLOW PREVENTER ON FIRE SERVICE. PROVIDE GATE SWITCHES ON BFP VALVES AND FLOW SWITCH ON FIRE PROTECTION LINE AFTER BFP.
 - ⑥ EXISTING 3" COLD WATER LINE TO BE ABANDONED IN PLACE AFTER INSTALLATION OF NEW SERVICE LINE. CAP LINE AFTER EXISTING CURB STOP.
 - ⑦ NEW 4" DOMESTIC WATER METER, AND METER PIT. WATER METER, METER PIT SHUT-OFF VALVES AND ACCESSORIES BY AMERICAN WATER COMPANY, BUT PAID FOR BY THIS CONTRACTOR.
 - ⑧ PROVIDE GATE SWITCHES ON VALVES. CONNECT TO FIRE ALARM SYSTEM IN STUDENT UNION ADDITION.
 - ⑨ REFER TO SHEET M1 FOR SITE UTILITY RELOCATION AND CONNECTIONS.
 - ⑩ ROUTE CIRCUIT TO PANEL VIA LIGHTING CONTACTOR, TIME CLOCK, AND ROOF MOUNTED PHOTOCELL. LOCATE TIME CLOCK AND LIGHTING CONTACTOR NEXT TO PANEL HPI.
 - ⑪ EXISTING ROOF MOUNTED LIGHT TO BE REMOVED AND RELOCATED.
 - ⑫ 1-1/2" HIGH PRESSURE GAS TO BE REMOVED FROM UNDER BUILDING ADDITION.
 - ⑬ 10" STORM TO BE REMOVED FROM UNDER BUILDING ADDITION AND BE REPLACED.
 - ⑭ 6" SANITARY SEWER TO BE REMOVED FROM UNDER BUILDING ADDITION AND BE REPLACED.

DELETE UNDER ALTERNATE NO. 2

SITE PLAN - MECHANICAL AND ELECTRICAL
 SCALE: 1" = 30'-0"



BACKFLOW PREVENTION PIT DETAIL
 NOT TO SCALE

MISSOURI STATE UNIVERSITY
 PROJECT NUMBER: 982702
 GOOD DRAWING FILE NAME: 982702.DWG
 PLOT DATE: 12-2-98
 PLOT BY: JWB
 PLOT SCALE: 1" = 30'-0"

S&B #4821902
SMITH & BOUCHER, INC.
 CONSULTING ENGINEERS
 8620 WEST 110TH STREET
 OVERLAND PARK, KANSAS 66210
 (913) 345-2127
 smith & boucher, inc. (913) 345-0817 (FAX)