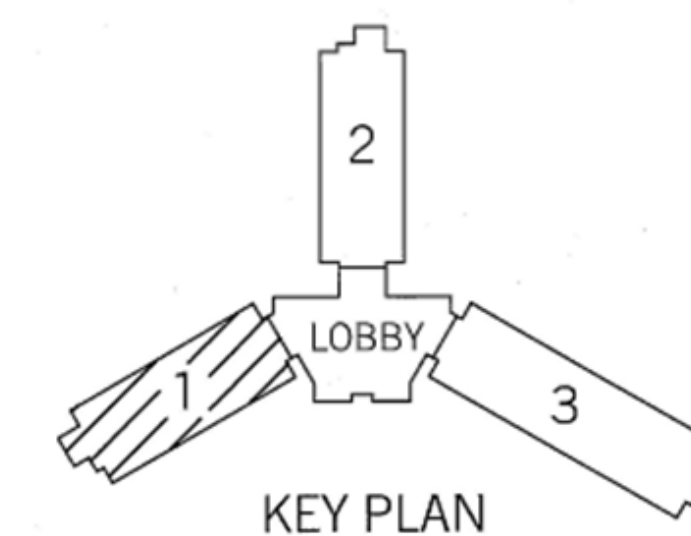


ELECTRICAL PLAN NOTES:

- 1 PROVIDE ROUGH IN FOR POWER/DATA CONNECTIONS FOR BEACON SYSTEM. EQUIPMENT AND CONNECTIONS TO EQUIPMENT PROVIDED BY OTHERS.
- 2 JUNCTION BOX AND CIRCUIT FOR FIRE SMOKE DAMPER POWER CONNECTIONS. COORDINATE ROUGH-IN WITH HVAC CONTRACTOR AND PROVIDE COMPLETE CONNECTIONS TO EQUIPMENT AS REQUIRED BY MANUFACTURER. LOCATE JUNCTION BOX ABOVE ACCESSIBLE CEILING IN CORRIDOR. REFER TO MECHANICAL DRAWINGS FOR DAMPER LOCATIONS.
- 3 PROVIDE ACCESSIBLE JUNCTION BOX FOR WIRELESS ACCESS POINT ABOVE CEILING. EQUIPMENT AND CONNECTIONS TO EQUIPMENT PROVIDED BY OTHERS.
- 4 VERIFY MOUNTING HEIGHT WITH MECHANICAL CONTRACTOR PRIOR TO ROUGH IN.



1 POWER PLAN - FIRST FLOOR - AREA 1
SCALE: 1/8"=1'-0"



REVISION DATE

PROJECT:
New Facility

New Residence Hall
Missouri Western State University
4525 Downs Drive
St. Joseph, Missouri

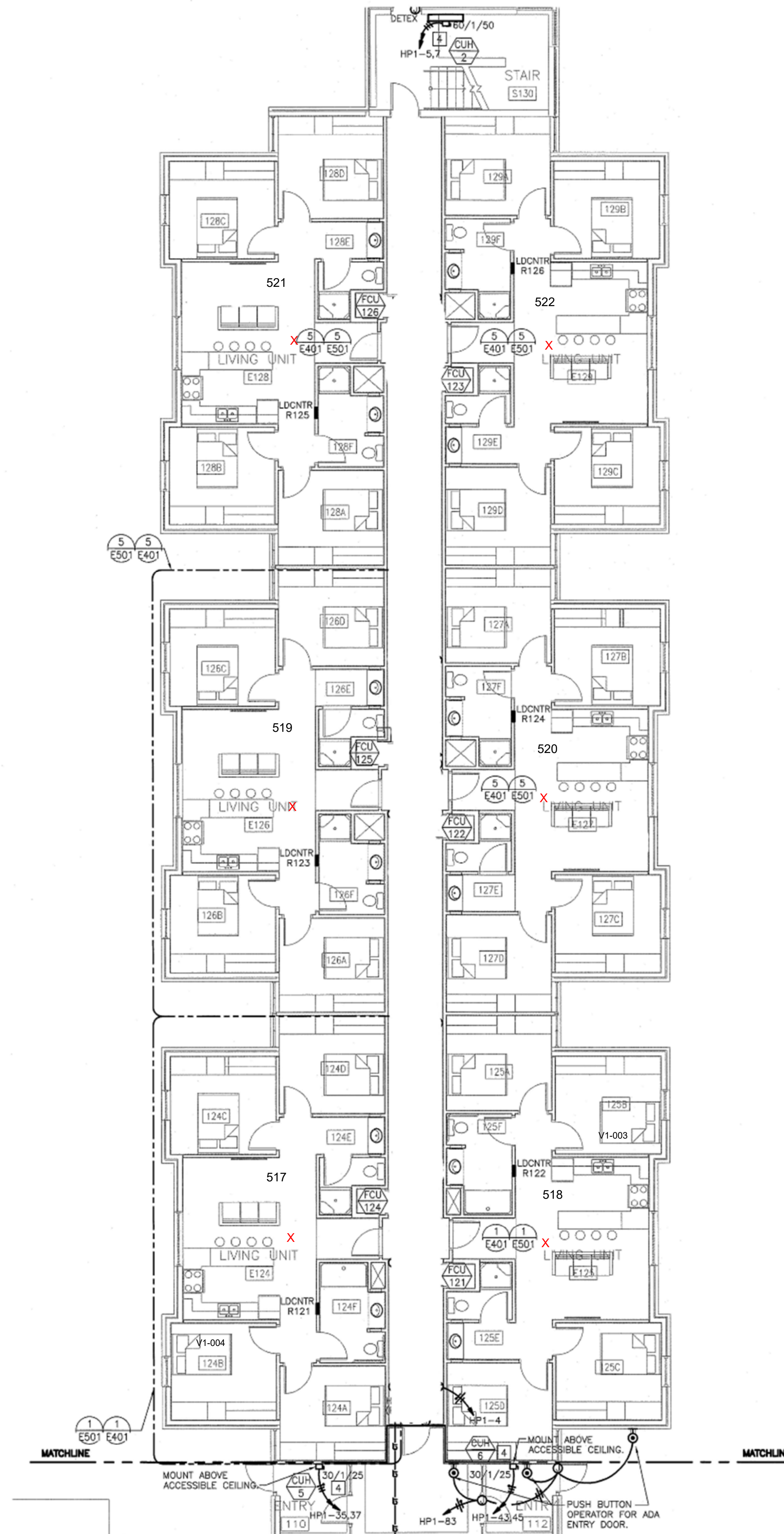
POWER PLAN
FIRST FLOOR
AREA 1

SHEET:

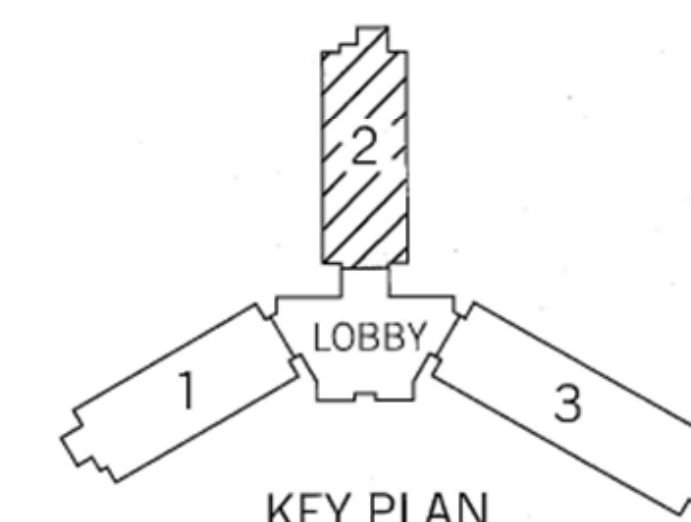
E201

OF: 126

DATE: 06.25.10



1 POWER PLAN - FIRST FLOOR - AREA 2
SCALE: 1/8"=1'-0"



- ELECTRICAL PLAN NOTES:**
1. PROVIDE ROUGH IN FOR POWER/DATA CONNECTIONS FOR BEACON SYSTEM. EQUIPMENT AND CONNECTIONS TO EQUIPMENT PROVIDED BY OTHERS.
 2. JUNCTION BOX AND CIRCUIT FOR FIRE SMOKE DAMPER POWER CONNECTIONS. COORDINATE ROUGH-IN WITH HVAC CONTRACTOR AND PROVIDE COMPLETE CONNECTIONS TO EQUIPMENT AS REQUIRED BY MANUFACTURER. LOCATE JUNCTION BOX ABOVE ACCESSIBLE CEILING IN CORRIDOR. REFER TO MECHANICAL DRAWINGS FOR DAMPER LOCATIONS.
 3. PROVIDE ACCESSIBLE JUNCTION BOX FOR WIRELESS ACCESS POINT ABOVE CEILING. EQUIPMENT AND CONNECTIONS TO EQUIPMENT PROVIDED BY OTHERS.
 4. VERIFY MOUNTING HEIGHT WITH MECHANICAL CONTRACTOR PRIOR TO ROUGH IN.



ellison - auxier architects, inc.
924 francis
st. joseph, mo 64501
phone: (816)-233-8003
fax: (816)-233-7793
ellisonauxier@sbcglobal.net



8325 LENEXA DRIVE
LENEXA, KS 66214
TEL 913.742.5000 FAX 913.742.5001
www.hoi-eng.com
1050000331
MO. CORPORATE NUMBER: E-5569
EXPIRES 12/31/10



REVISION DATE

PROJECT:
New Facility

New Residence Hall
Missouri Western State University
4525 Downs Drive
St. Joseph, Missouri

POWER PLAN
FIRST FLOOR
AREA 2

SHEET:

E202

OF: 126

DATE: 06.25.10



ellison - auxier
architects, inc.
924 francis
st. joseph, mo 64501
phone: (816) 233-8003
fax: (816) 233-7793
ellisonauxier@sbcglobal.net

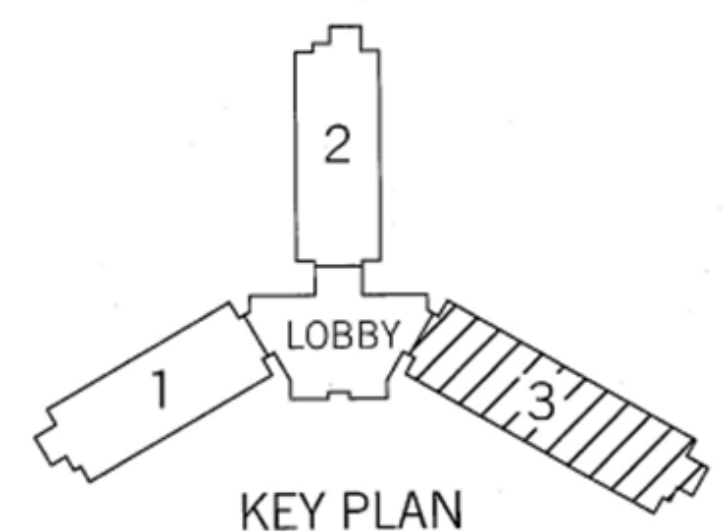
HENDERSON ENGINEERS
8325 VENTURA DRIVE
LENEXA, KS 66214
TEL 913.742.5000 FAX 913.742.5001
www.hoi-eng.com
1090000331
MO. CORPORATE NUMBER: E-5540
EXPIRES 12/31/10

HENDERSON ENGINEERS
CELEBRATING
40
1970 YEARS 2010

- ELECTRICAL PLAN NOTES:**
- 1 PROVIDE ROUGH IN FOR POWER/DATA CONNECTIONS FOR BEACON SYSTEM. EQUIPMENT AND CONNECTIONS TO EQUIPMENT PROVIDED BY OTHERS.
 - 2 JUNCTION BOX AND CIRCUIT FOR FIRE SMOKE DAMPER POWER CONNECTIONS. COORDINATE ROUGH-IN WITH HVAC CONTRACTOR AND PROVIDE COMPLETE CONNECTIONS TO EQUIPMENT AS REQUIRED BY MANUFACTURER. LOCATE JUNCTION BOX ABOVE ACCESSIBLE CEILING IN CORRIDOR. REFER TO MECHANICAL DRAWINGS FOR DAMPER LOCATIONS.
 - 3 PROVIDE ACCESSIBLE JUNCTION BOX FOR WIRELESS ACCESS POINT ABOVE CEILING. EQUIPMENT AND CONNECTIONS TO EQUIPMENT PROVIDED BY OTHERS.
 - 4 VERIFY MOUNTING HEIGHT WITH MECHANICAL CONTRACTOR PRIOR TO ROUGH IN.



1 POWER PLAN - FIRST FLOOR - AREA 3
SCALE: 1/8"=1'-0"



REVISION DATE

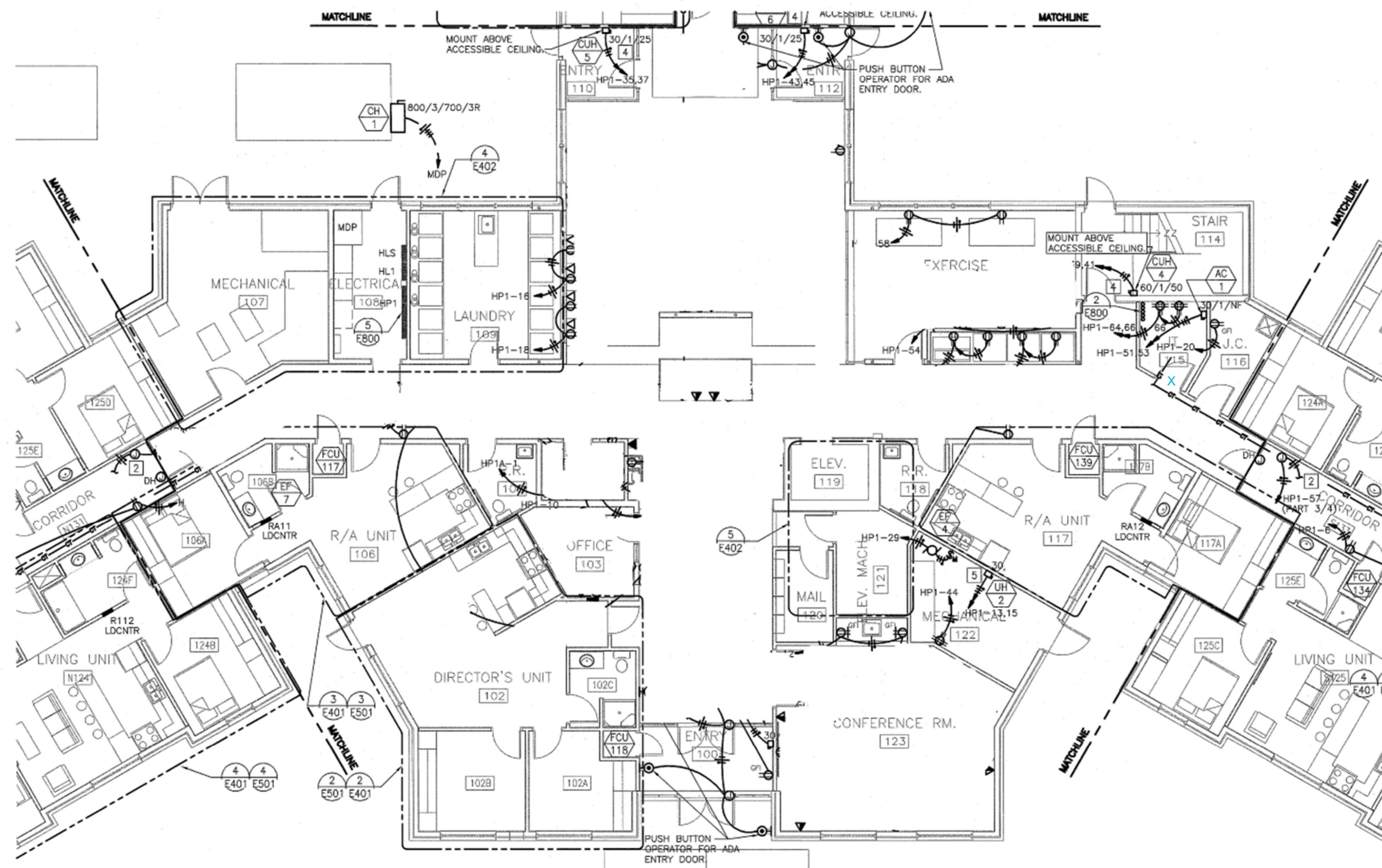
PROJECT:
New Facility

New Residence Hall
Missouri Western State University
4525 Downs Drive
St. Joseph, Missouri

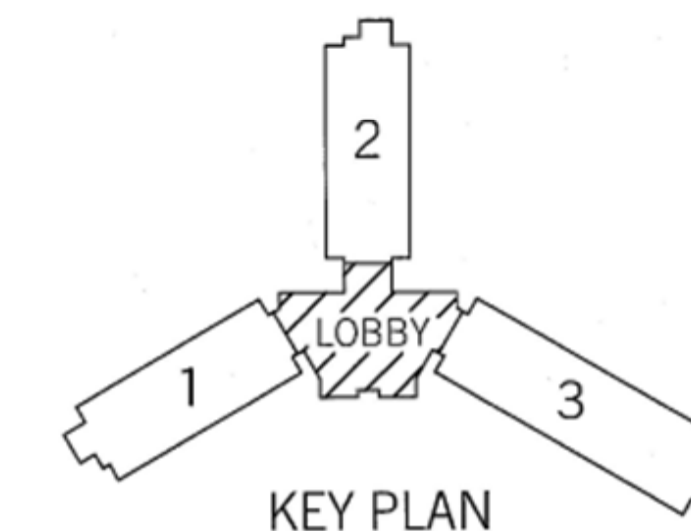
POWER PLAN
FIRST FLOOR
AREA 3
SHEET:
E203
OF: 126
DATE: 06.25.10

ELECTRICAL PLAN NOTES:

- 1 PROVIDE ROUGH IN FOR POWER/DATA CONNECTIONS FOR BEACON SYSTEM. EQUIPMENT AND CONNECTIONS TO EQUIPMENT PROVIDED BY OTHERS.
- 2 JUNCTION BOX AND CIRCUIT FOR FIRE SMOKE DAMPER POWER CONNECTIONS. COORDINATE ROUGH-IN WITH HVAC CONTRACTOR AND PROVIDE COMPLETE CONNECTIONS TO EQUIPMENT AS REQUIRED BY MANUFACTURER. LOCATE JUNCTION BOX ABOVE ACCESSIBLE CEILING IN CORRIDOR. REFER TO MECHANICAL DRAWINGS FOR DAMPER LOCATIONS.
- 3 PROVIDE ACCESSIBLE JUNCTION BOX FOR WIRELESS ACCESS POINT ABOVE CEILING. EQUIPMENT AND CONNECTIONS TO EQUIPMENT PROVIDED BY OTHERS.
- 4 VERIFY MOUNTING HEIGHT WITH MECHANICAL CONTRACTOR PRIOR TO ROUGH IN.
- 5 VERIFY EXACT LOCATION AND MOUNTING HEIGHT WITH ARCHITECT PRIOR TO ROUGH IN.
- 6 VERIFY FINAL LOCATION WITH ARCHITECT PRIOR TO ROUGH IN.
- 7 PROVIDE (5) 4" CONDUITS THROUGH THE FIRST FLOOR. TWO CONDUITS TO SECOND FLOOR IT CLOSET, TWO CONDUITS TO THIRD FLOOR IT CLOSET AND ONE TO SECOND FLOOR ELECTRICAL ROOM FOR SECURITY.



1 POWER PLAN - 1ST FLOOR - LOBBY
SCALE: 1/8"=1'-0"



KEY PLAN

- ELECTRICAL PLAN NOTES:
- 1 PROVIDE ROUGH IN FOR POWER/DATA CONNECTIONS FOR BEACON SYSTEM. EQUIPMENT AND CONNECTIONS TO EQUIPMENT PROVIDED BY OTHERS.
 - 2 JUNCTION BOX AND CIRCUIT FOR FIRE SMOKE DAMPER POWER CONNECTIONS. COORDINATE ROUGH-IN WITH HVAC CONTRACTOR AND PROVIDE COMPLETE CONNECTIONS TO EQUIPMENT AS REQUIRED BY MANUFACTURER. LOCATE JUNCTION BOX ABOVE ACCESSIBLE CEILING IN CORRIDOR. REFER TO MECHANICAL DRAWINGS FOR DAMPER LOCATIONS.
 - 3 PROVIDE ACCESSIBLE JUNCTION BOX FOR WIRELESS ACCESS POINT ABOVE CEILING. EQUIPMENT AND CONNECTIONS TO EQUIPMENT PROVIDED BY OTHERS.



ellison - auxier
architects, inc.
924 francis
st. joseph, mo 64501
phone: (816) 233-8003
fax: (816) 233-7793
ellisonauxier@sbcglobal.net

HENDERSON ENGINEERS
8325 LEXA DRIVE
LEWIS, MO 64501
TEL 913 742 5000 FAX 913 742 5001
www.hel-eng.com
1050000331
MO. CORPORATE NUMBER: E-5540
EXPIRES 12/31/10
HENDERSON ENGINEERS
CELEBRATING
40
1970 YEARS 2010

REVISION DATE

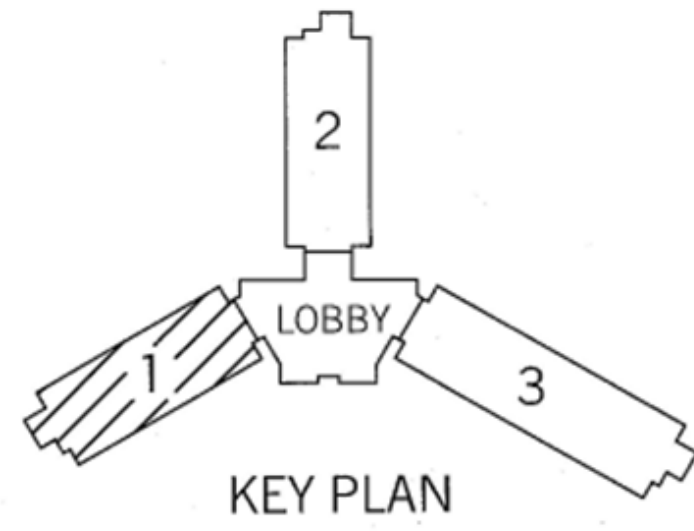
PROJECT:
New Facility

New Residence Hall
Missouri Western State University
4525 Downs Drive
St. Joseph, Missouri

POWER PLAN
SECOND FLOOR
AREA 1
SHEET:
E205
OF: 126
DATE: 06.25.10



1 POWER PLAN - SECOND FLOOR - AREA 1
SCALE: 1/8"=1'-0"



VINCENT G. MASILONS



ellison - auxier
architects, inc.
924 francis
st. joseph, mo 64501
phone: (816)-233-8003
fax: (816)-233-7793
ellisonauxier@sbcglobal.net

**HENDERSON
ENGINEERS**
8325 LENEXA DRIVE
LENEXA, KS 66214
TEL 913 742 5000 FAX 913 742 5001
www.h-ei-eng.com
1050000331
MO. CORPORATE VALUER: E-5560
EXPIRES 12/31/10



REVISION _____ DATE _____

PROJECT: _____
New Facility

New Residence Hall
Missouri Western State University
4525 Downs Drive
St. Joseph, Missouri

POWER PLAN
SECOND FLOOR
AREA 2

SHEET:

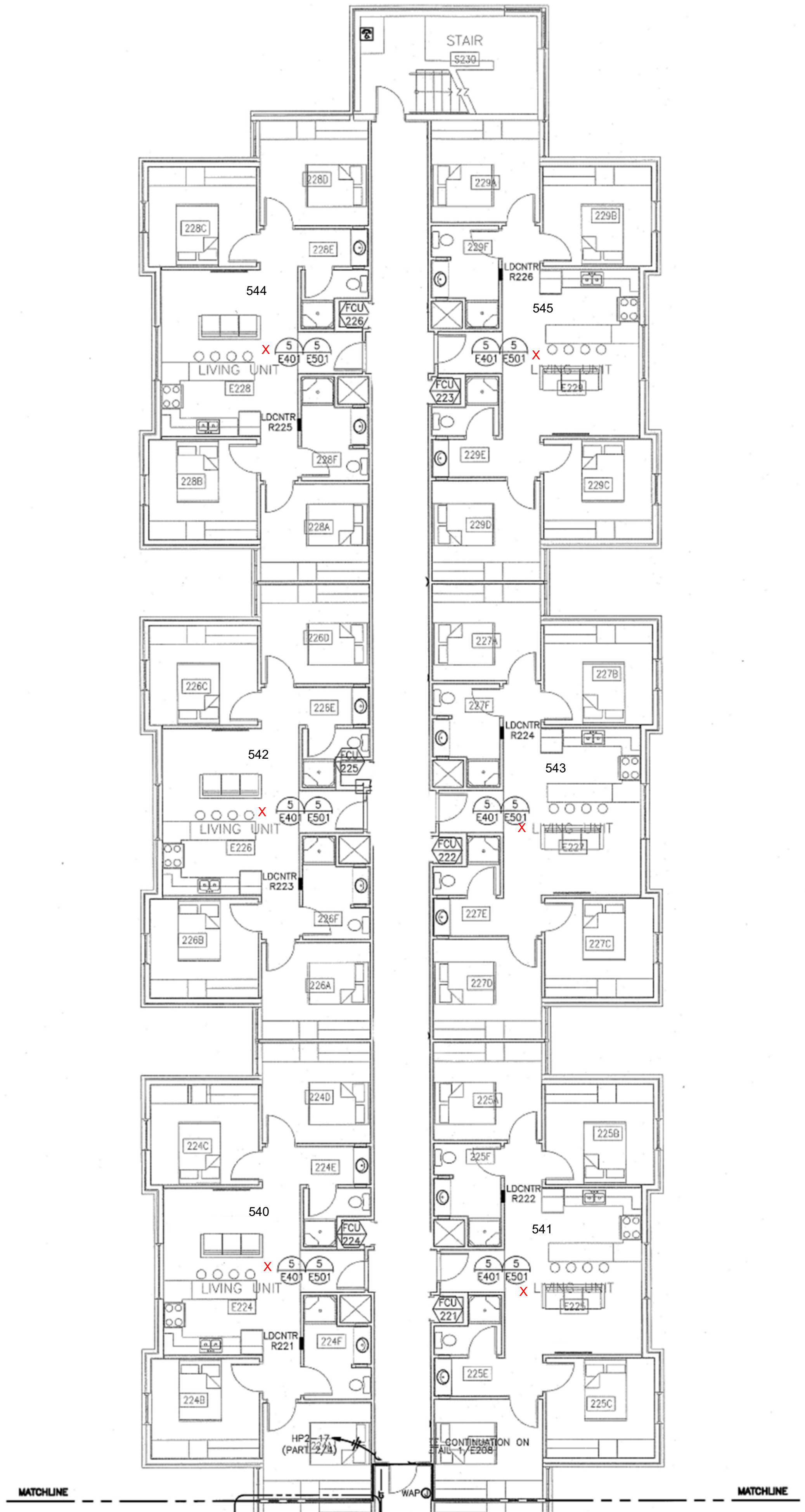
E206

OF: 126

DATE: 06.25.10

ELECTRICAL PLAN NOTES:

- 1 PROVIDE ROUGH IN FOR POWER/DATA CONNECTIONS FOR BEACON SYSTEM. EQUIPMENT AND CONNECTIONS TO EQUIPMENT PROVIDED BY OTHERS.
- 2 JUNCTION BOX AND CIRCUIT FOR FIRE SMOKE DAMPER POWER CONNECTIONS. COORDINATE ROUGH-IN WITH HVAC CONTRACTOR AND PROVIDE COMPLETE CONNECTIONS TO EQUIPMENT AS REQUIRED BY MANUFACTURER. LOCATE JUNCTION BOX ABOVE ACCESSIBLE CEILING IN CORRIDOR. REFER TO MECHANICAL DRAWINGS FOR DAMPER LOCATIONS.
- 3 PROVIDE ACCESSIBLE JUNCTION BOX FOR WIRELESS ACCESS POINT ABOVE CEILING. EQUIPMENT AND CONNECTIONS TO EQUIPMENT PROVIDED BY OTHERS.

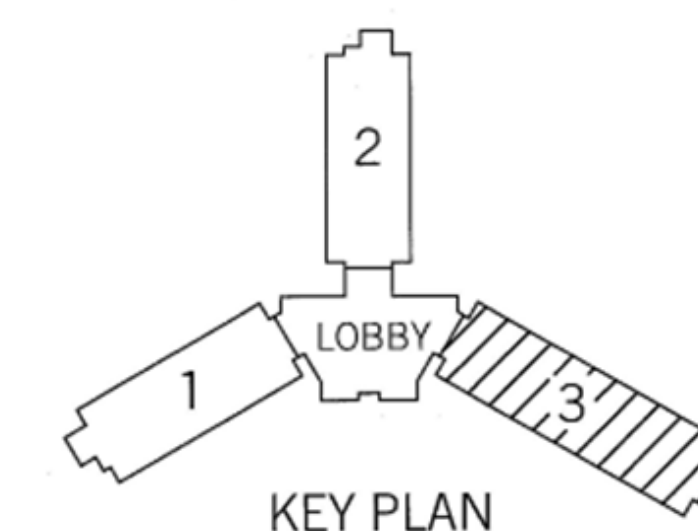


ELECTRICAL PLAN NOTES:

- 1 PROVIDE ROUGH IN FOR POWER/DATA CONNECTIONS FOR BEACON SYSTEM. EQUIPMENT AND CONNECTIONS TO EQUIPMENT PROVIDED BY OTHERS.
- 2 JUNCTION BOX AND CIRCUIT FOR FIRE SMOKE DAMPER POWER CONNECTIONS. COORDINATE ROUGH-IN WITH HVAC CONTRACTOR AND PROVIDE COMPLETE CONNECTIONS TO EQUIPMENT AS REQUIRED BY MANUFACTURER. LOCATE JUNCTION BOX ABOVE ACCESSIBLE CEILING IN CORRIDOR. REFER TO MECHANICAL DRAWINGS FOR DAMPER LOCATIONS.
- 3 PROVIDE ACCESSIBLE JUNCTION BOX FOR WIRELESS ACCESS POINT ABOVE CEILING. EQUIPMENT AND CONNECTIONS TO EQUIPMENT PROVIDED BY OTHERS.



1 POWER PLAN - SECOND FLOOR - AREA 3
SCALE: 1/8"=1'-0"



REVISION DATE

PROJECT:
New Facility

New Residence Hall
Missouri Western State University
4525 Downs Drive
St. Joseph, Missouri

POWER PLAN
SECOND FLOOR
AREA 3

SHEET:

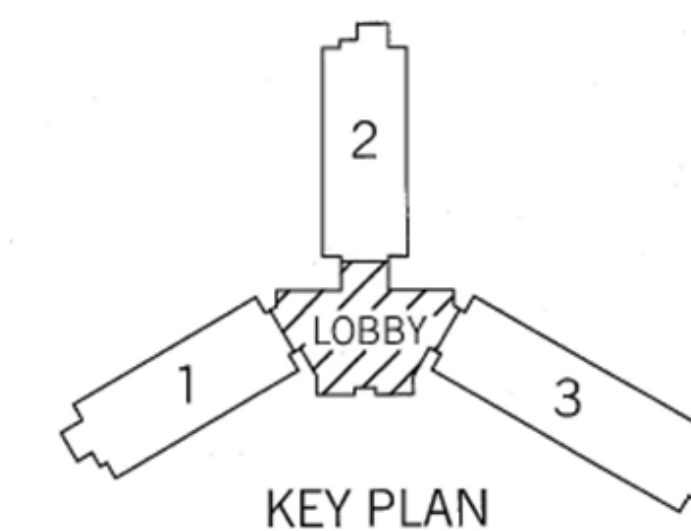
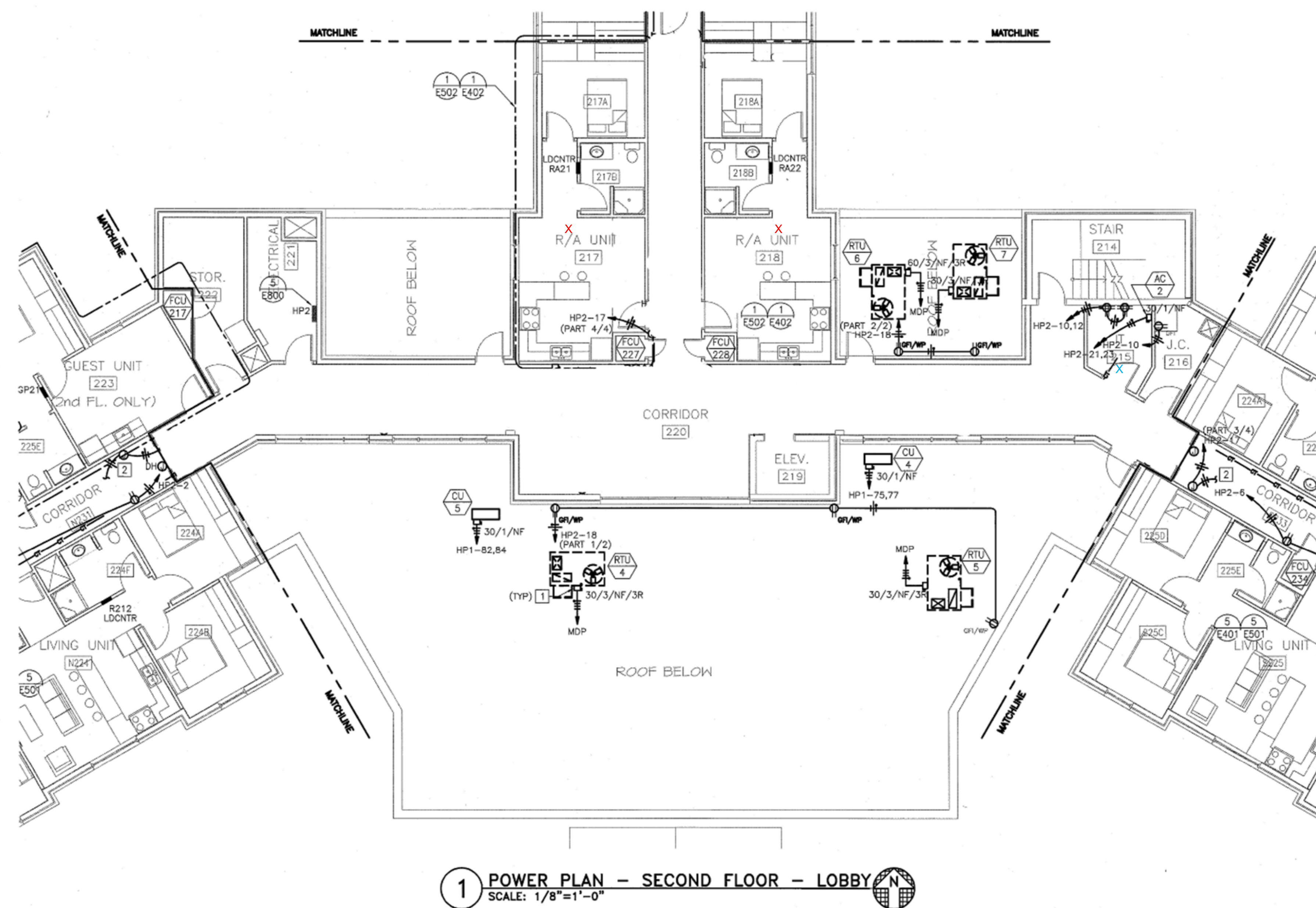
E207

OF: 126

DATE: 06.25.10

ELECTRICAL PLAN NOTES:

- 1 PROVIDE ROUGH IN FOR POWER/DATA CONNECTIONS FOR BEACON SYSTEM. EQUIPMENT AND CONNECTIONS TO EQUIPMENT PROVIDED BY OTHERS.
- 2 JUNCTION BOX AND CIRCUIT FOR FIRE SMOKE DAMPER POWER CONNECTIONS. COORDINATE ROUGH-IN WITH HVAC CONTRACTOR AND PROVIDE COMPLETE CONNECTIONS TO EQUIPMENT AS REQUIRED BY MANUFACTURER. LOCATE JUNCTION BOX ABOVE ACCESSIBLE CEILING IN CORRIDOR. REFER TO MECHANICAL DRAWINGS FOR DAMPER LOCATIONS.
- 3 PROVIDE ACCESSIBLE JUNCTION BOX FOR WIRELESS ACCESS POINT ABOVE CEILING. EQUIPMENT AND CONNECTIONS TO EQUIPMENT PROVIDED BY OTHERS.
- 4 VERIFY MOUNTING HEIGHT WITH MECHANICAL CONTRACTOR PRIOR TO ROUGH IN.



REVISION DATE

PROJECT:
New Facility

New Residence Hall
Missouri Western State University
4525 Western Drive
St. Joseph, Missouri

POWER PLAN
SECOND FLOOR
LOBBY

SHEET:

E208

OF: 126

DATE: 06.25.10

ELECTRICAL PLAN NOTES:

- 1 PROVIDE ROUGH IN FOR POWER/DATA CONNECTIONS FOR BEACON SYSTEM. EQUIPMENT AND CONNECTIONS TO EQUIPMENT PROVIDED BY OTHERS.
- 2 JUNCTION BOX AND CIRCUIT FOR FIRE SMOKE DAMPER POWER CONNECTIONS. COORDINATE ROUGH-IN WITH HVAC CONTRACTOR AND PROVIDE COMPLETE CONNECTIONS TO EQUIPMENT AS REQUIRED BY MANUFACTURER. LOCATE JUNCTION BOX ABOVE ACCESSIBLE CEILING IN CORRIDOR. REFER TO MECHANICAL DRAWINGS FOR DAMPER LOCATIONS.
- 3 PROVIDE ACCESSIBLE JUNCTION BOX FOR WIRELESS ACCESS POINT ABOVE CEILING. EQUIPMENT AND CONNECTIONS TO EQUIPMENT PROVIDED BY OTHERS.



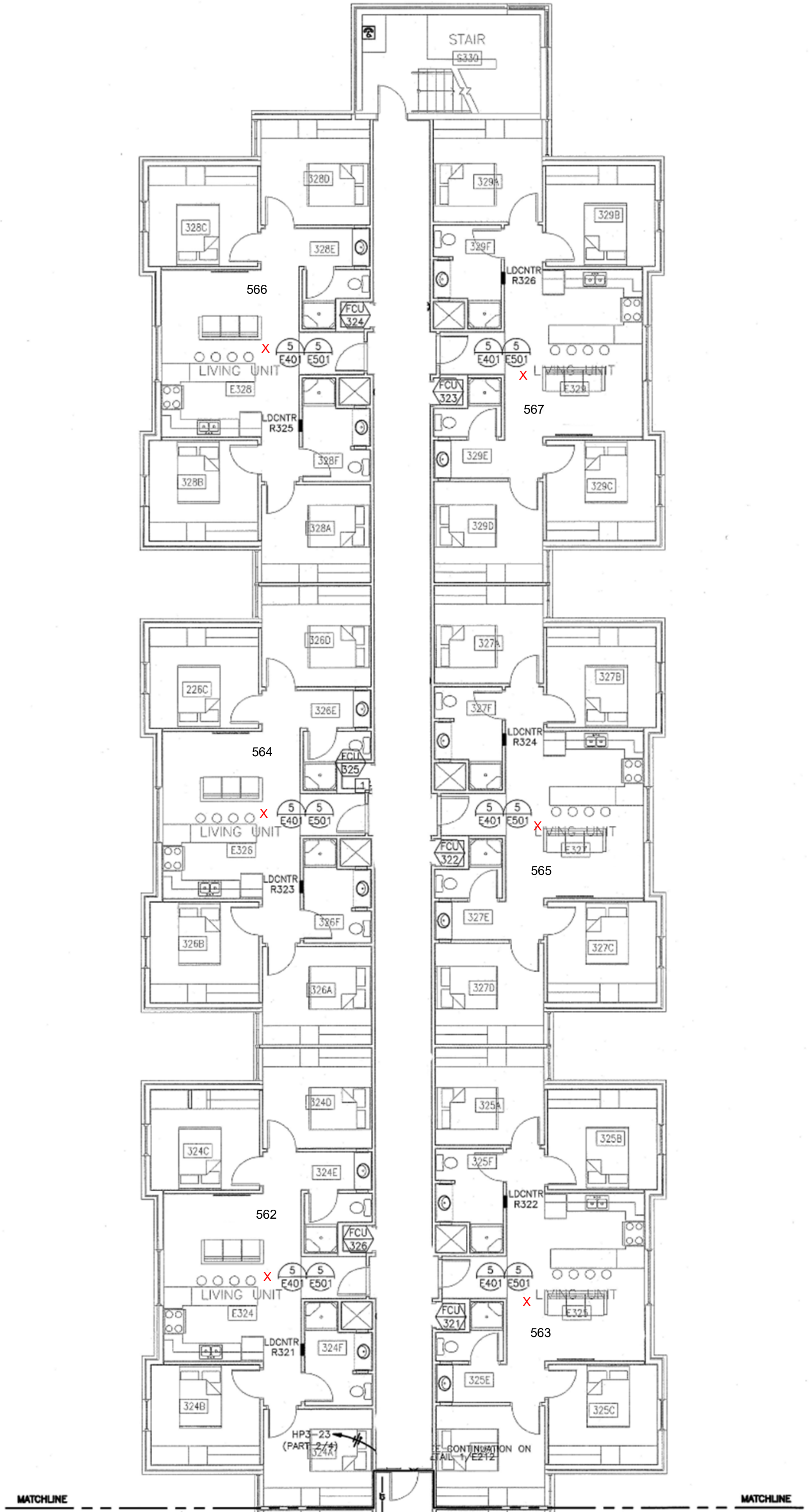


ellison - auxier
architects, inc.
924 francis
st. joseph, mo 64501
phone: (816) 233-8003
fax: (816) 233-7793
ellisonauxier@sbcglobal.net

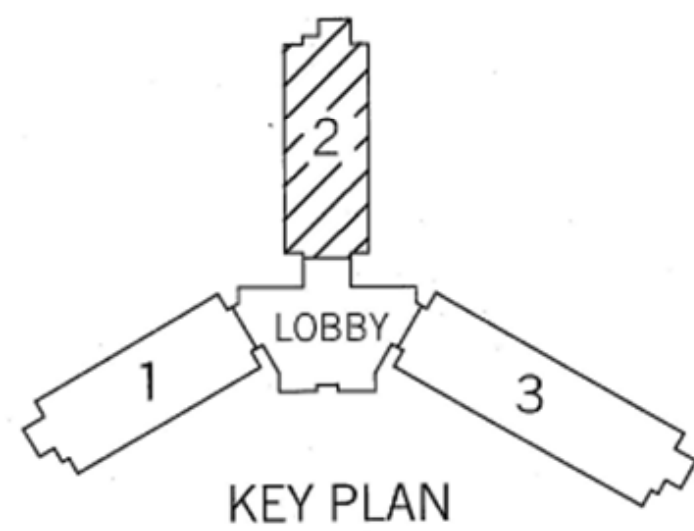
HENDERSON ENGINEERS
8375 LENEXA DRIVE
LENEXA, KS 66214
TEL 913 742 5000 FAX 913 742 5001
www.hel-eng.com
1050000331
ADD. CORPORATE WARRANTY: E5560
EXPIRES 12/31/10

HENDERSON ENGINEERS
CELEBRATING
40
1970 YEARS 2010

- ELECTRICAL PLAN NOTES:**
1. PROVIDE ROUGH IN FOR POWER/DATA CONNECTIONS FOR BEACON SYSTEM. EQUIPMENT AND CONNECTIONS TO EQUIPMENT PROVIDED BY OTHERS.
 2. JUNCTION BOX AND CIRCUIT FOR FIRE SMOKE DAMPER POWER CONNECTIONS. COORDINATE ROUGH-IN WITH HVAC CONTRACTOR AND PROVIDE COMPLETE CONNECTIONS TO EQUIPMENT AS REQUIRED BY MANUFACTURER. LOCATE JUNCTION BOX ABOVE ACCESSIBLE CEILING IN CORRIDOR. REFER TO MECHANICAL DRAWINGS FOR DAMPER LOCATIONS.
 3. PROVIDE ACCESSIBLE JUNCTION BOX FOR WIRELESS ACCESS POINT ABOVE CEILING. EQUIPMENT AND CONNECTIONS TO EQUIPMENT PROVIDED BY OTHERS.



1 POWER PLAN - THIRD FLOOR - AREA 2
SCALE: 1/8"=1'-0"



REVISION _____ DATE _____

PROJECT: _____
New Facility

New Residence Hall
Missouri Western State University
4525 Downs Drive
St. Joseph, Missouri

POWER PLAN
THIRD FLOOR
AREA 2

SHEET:
E210

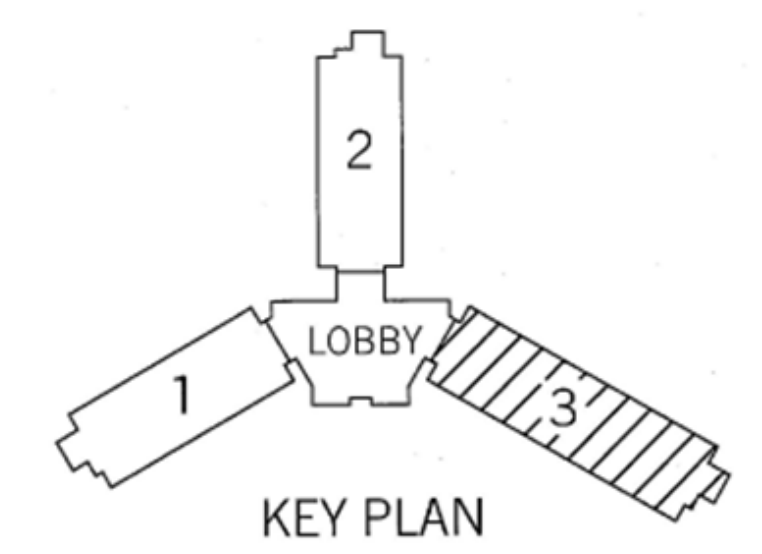
OF: 126

DATE: 06.25.10

- ELECTRICAL PLAN NOTES:**
- 1 PROVIDE ROUGH IN FOR POWER/DATA CONNECTIONS FOR BEACON SYSTEM. EQUIPMENT AND CONNECTIONS TO EQUIPMENT PROVIDED BY OTHERS.
 - 2 JUNCTION BOX AND CIRCUIT FOR FIRE SMOKE DAMPER POWER CONNECTIONS. COORDINATE ROUGH-IN WITH HVAC CONTRACTOR AND PROVIDE COMPLETE CONNECTIONS TO EQUIPMENT AS REQUIRED BY MANUFACTURER. LOCATE JUNCTION BOX ABOVE ACCESSIBLE CEILING IN CORRIDOR. REFER TO MECHANICAL DRAWINGS FOR DAMPER LOCATIONS.
 - 3 PROVIDE ACCESSIBLE JUNCTION BOX FOR WIRELESS ACCESS POINT ABOVE CEILING. EQUIPMENT AND CONNECTIONS TO EQUIPMENT PROVIDED BY OTHERS.



1 POWER PLAN - THIRD FLOOR - AREA 3
 SCALE: 1/8"=1'-0"



REVISION DATE

PROJECT:
 New Facility

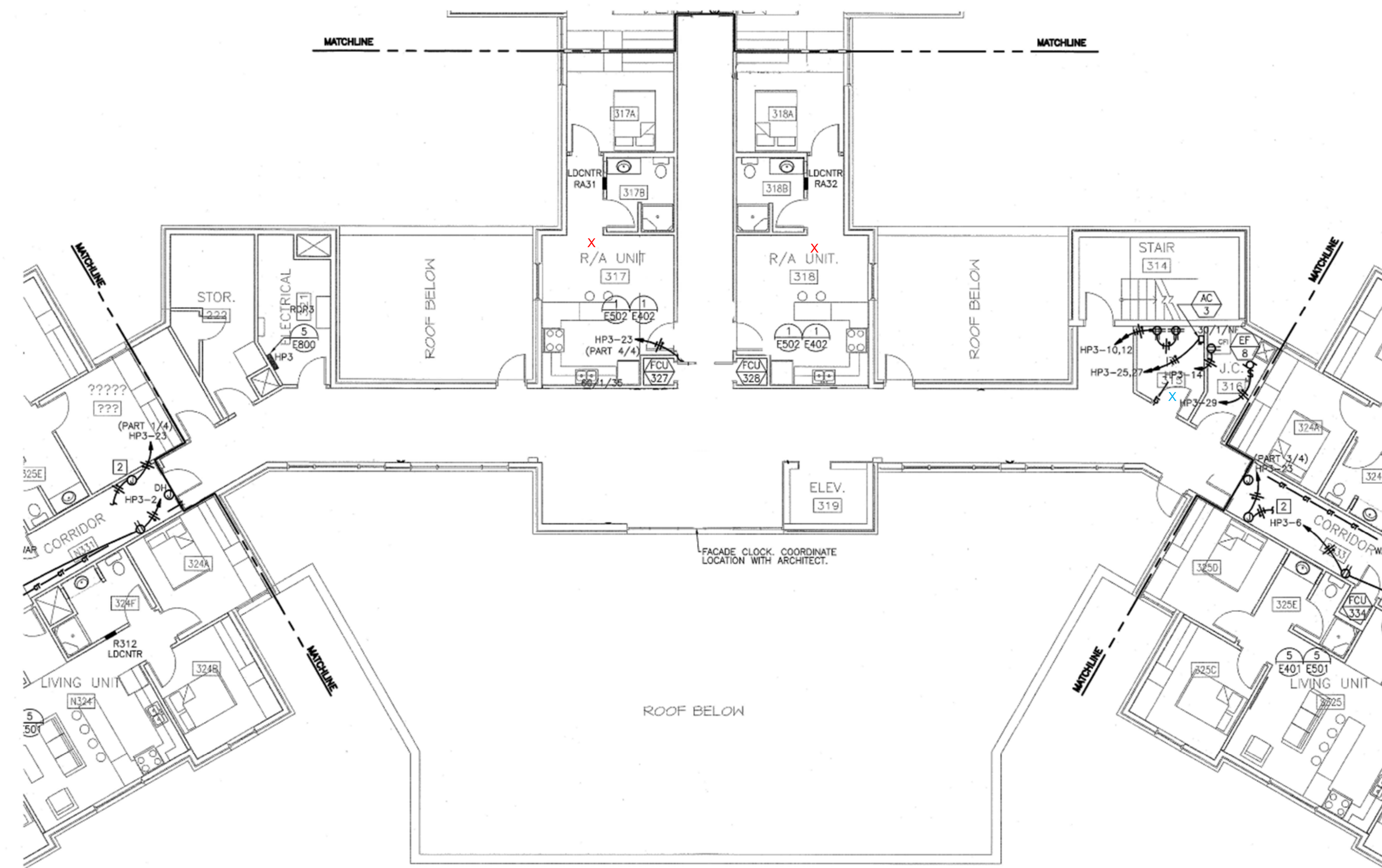
New Residence Hall
 Missouri Western State University
 4525 Downs Drive
 St. Joseph, Missouri

POWER PLAN
THIRD FLOOR
AREA 3

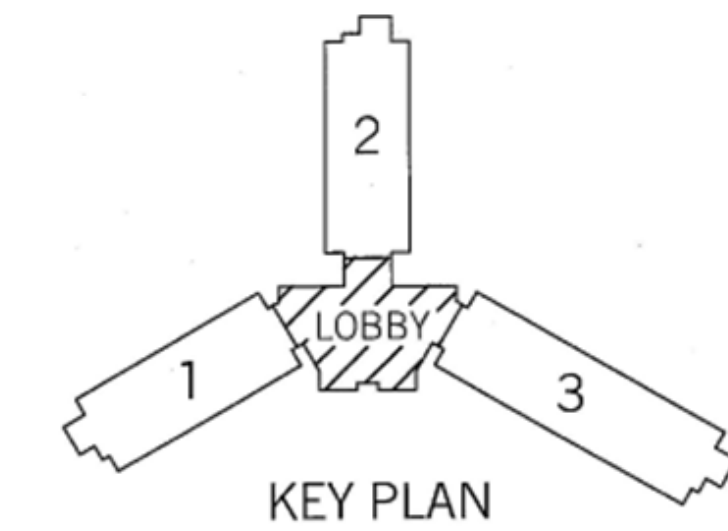
SHEET:
E211

OF: 126
 DATE: 06.25.10

- ELECTRICAL PLAN NOTES:**
1. PROVIDE ROUGH IN FOR POWER/DATA CONNECTIONS FOR BEACON SYSTEM. EQUIPMENT AND CONNECTIONS TO EQUIPMENT PROVIDED BY OTHERS.
 2. JUNCTION BOX AND CIRCUIT FOR FIRE SMOKE DAMPER POWER CONNECTIONS. COORDINATE ROUGH-IN WITH HVAC CONTRACTOR AND PROVIDE COMPLETE CONNECTIONS TO EQUIPMENT AS REQUIRED BY MANUFACTURER. LOCATE JUNCTION BOX ABOVE ACCESSIBLE CEILING IN CORRIDOR. REFER TO MECHANICAL DRAWINGS FOR DAMPER LOCATIONS.
 3. PROVIDE ACCESSIBLE JUNCTION BOX FOR WIRELESS ACCESS POINT ABOVE CEILING. EQUIPMENT AND CONNECTIONS TO EQUIPMENT PROVIDED BY OTHERS.
 4. VERIFY MOUNTING HEIGHT WITH MECHANICAL CONTRACTOR PRIOR TO ROUGH IN.



1 POWER PLAN - THIRD FLOOR - LOBBY
SCALE: 1/8"=1'-0"



REVISION DATE

PROJECT:
New Facility

New Residence Hall
Missouri Western State University
4525 Downs Drive
St. Joseph, Missouri

POWER PLAN
THIRD FLOOR
LOBBY

SHEET:
E212

OF: 126

DATE: 06.25.10