

**PLAN NOTES:**

**DEMO/FIELD VERIFY CONDITIONS-SEE PLAN BELOW FOR NOTE LOCATION**

1. REMOVE EXISTING CARPET AND BASE.
2. REMOVE EXISTING WALLCOVERING, CHAIR RAIL, OLD CONDUIT, PLUG MOULD, DATA DROPS. PATCH AND REPAIR ALL WALLS TO RECEIVE PAINT. FINISH TO BE SMOOTH AND FREE OF HOLES, KNICKS, ETC.
3. REMOVE 2 EXISTING DOORS, DOOR HEAD AND TRANSOM. REPAIR FRAME, FILL HOLES, HINGE PREPS & STRIKES. PATCH TO BE SMOOTH.
4. BLINDS TO REMAIN.
5. NO WORK TO WINDOW SILLS.
6. CEILING TILE, FIXTURES AND GRID REMAIN.

**NEW WORK**

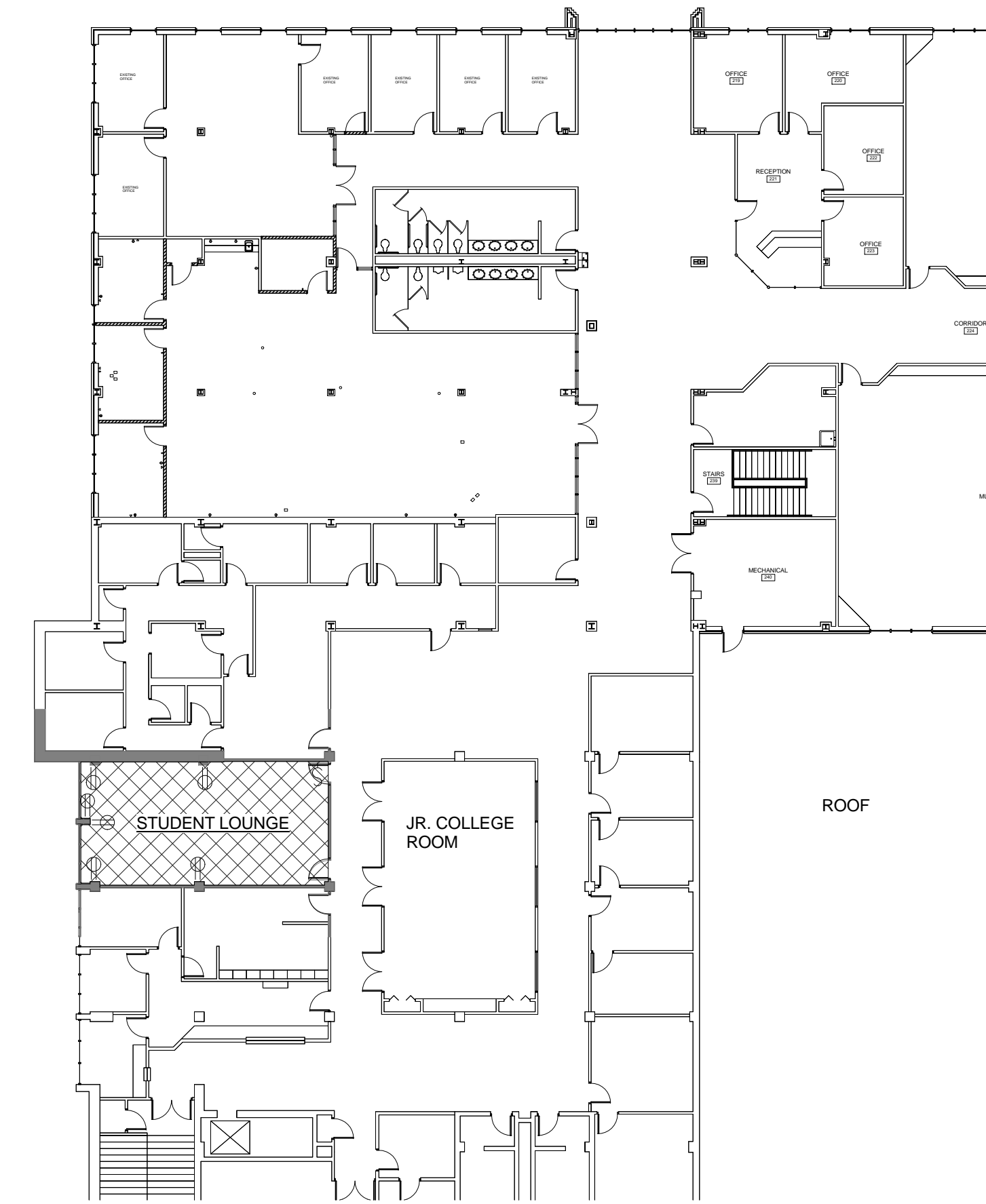
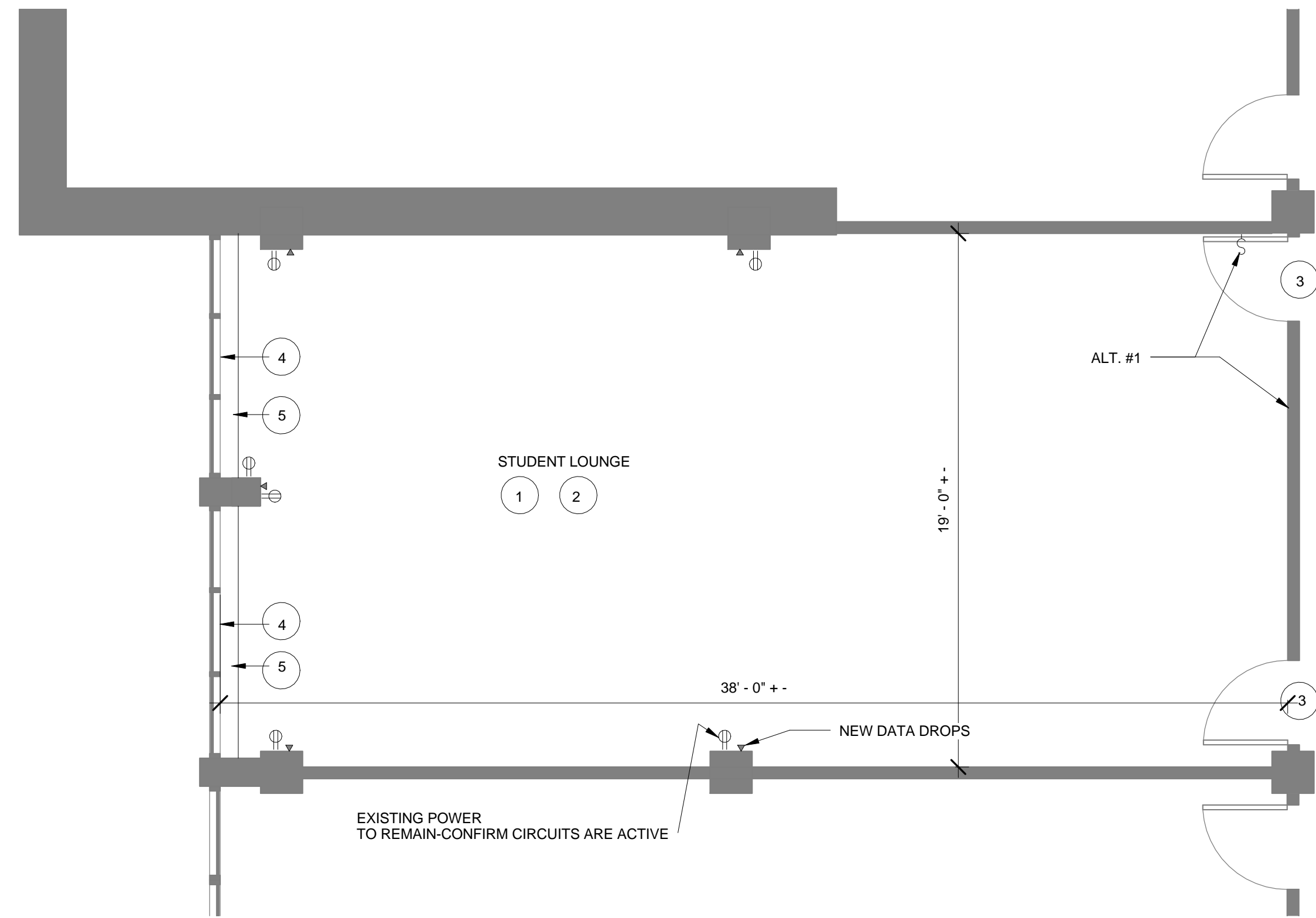
1. PAINT ALL WALLS AND METAL CASED OPENINGS.
2. INSTALL NEW CARPET AND BASE.
3. CLEAN AND PAINT RUSTED DIFFUSERS AND RUSTED AREAS OF CEILING GRID, 9' CLG. HGT.
4. INSTALL DATA DROPS ON ALL PILASTERS AND INSTALL USB OUTLETS AT EACH EXISTING OUTLET, AND ON PILASTERS.
5. PATCH AND REPAIR ANY AREAS ON THE HALL SIDE OF ROOM THAT ARE TOUCHED DURING DEMO.

**ALTERNATE BID #1**

REMOVE FRONT WALL, DOORS AND FRAMES. INSTALL GYP. BULK HEAD 4" BELOW EXISTING CEILING TILE-PAINT. PATCH WALLS AT REMOVED JAMBS WITH HOLLOW METAL TRIM, PAINTED, THE WIDTH OF REMOVED JAMB.  
RELOCATE LIGHT SWITCH TO WALL AS SHOWN.

**FINISHES**

CARPET: J&J COMMERCIAL COALESCE 1450 MINGLE (TO MATCH CORRIDOR CARPET) MODULAR  
BASE: JOHNSONITE 40 BLACK, 4"  
PAINT: SW 7044 AMAZING GREY  
HOLLOW METAL: SW 7069 IRON ORE  
ALTERNATE BID SOFFIT SW CEILING WHITE



1/13/2017 11:20:22 AM Z:\Education\Missouri\WesternBlum Union (SU)\STUDENT LOUNGE.rvt

**1 SECOND FLOOR-DEMO NOTES**  
SCALE: 1/4" = 1'-0"

**2 SECOND FLOOR BLUM HALL-PROJECT MAP**  
SCALE: 1" = 20'-0"



924 FRANCIS ST.  
ST. JOSEPH, MO 64501  
P: 816-233-8003 F: 816-233-7793  
www.ellison-auxier.com

CONSULTANTS

NO.	ISSUE DESCRIPTION	DATE

NO.	REVISION DESCRIPTION	DATE

PROJECT:  
STUDENT LOUNGE REMODEL-BLUM UNION  
MISSOURI WESTERN STATE UNIVERSITY  
4625 DOWNS DRIVE  
ST. JOSEPH, MO 64505

SECOND FLOOR PLAN

SHEET:  
**A221**  
OF 1 DATE: NOVEMBER 2017

