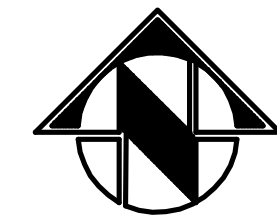


TOPOGRAPHIC SURVEY



NORTH
1" = 30'

- ▲ = CONTROL POINT
- ◆ = BENCHMARK
- ⊕ = FIRE HYDRANT
- ⊙ = SIGN
- ⊙ = LIGHT POLE
- ⊙ = BUSH
- ⊙ = TREE
- = MANHOLE
- * = FLOOD LIGHT
- ⊙ = GAS METER
- ⊙ = WATER METER
- ⊙ = WATER VALVE
- CMP = CORRUGATED METAL PIPE
- F/L = FLOW LINE
- W— = WATERLINE
- SS— = SANITARY SEWER LINE
- ST— = STORM SEWER LINE
- UE— = UNDERGROUND ELECTRIC LINE
- FO— = FIBER OPTIC LINE
- G— = GAS LINE
- UT— = UNDERGROUND TELEPHONE LINE
- ▒ = CONCRETE
- ▒ = ASPHALT
- ▒ = GRAVEL



MISSOURI ONE-CALL SYSTEM, INC.

SURVEYOR'S CERTIFICATION:

I HEREBY CERTIFY that we have performed a survey and prepared the accompanying plat of the premises described herein which meets or exceeds the current Missouri Minimum Standards for Property Boundary Surveys, 10 CSR 30-2 and 20 CSR 2030-16, and that the results of said survey are represented on this plat to the best of my professional knowledge and belief.

WITNESS hand and seal this Sixteenth (16th) day of March, 2017.

R. Curtis McAdams
Missouri P.L.S. 2005019225

SURVEYOR'S NOTES:

1. Horizontal control is in reference to Missouri State Plane Coordinates West Zone NAD 83 as determined by GPS observation of Buchanan County Geographic Reference System Monuments BU-06, BU-07 and BU-16.
2. Vertical control is based on the City of St. Joseph Vertical Control Adjustment 2008 as determined by GPS observation of Buchanan County Geographic Reference System Monument BU-07. Vertical Datum is NAVD 88.
3. Utility locations are based on Missouri ONE-CALL Ticket Nos. 170660793 and 170660801, and by Missouri Western personnel. Utility companies notified: AT&T Distribution, Missouri Gas Energy, Missouri American Water Company, Kansas City Power & Light, City of St. Joseph Traffic Department, City of St. Joseph Sewer Department, and Suddenlink Communications St. Joseph.
4. Subsurface and environmental conditions were not examined or considered as a part of this survey. No statement is made concerning the existence of underground or overhead containers or facilities that may affect the use or development of this tract.
5. Sprinkler heads and irrigation lines are not shown hereon.
6. All hedges and ground cover on the site may not be shown hereon.


UTILITY WARNING

The locations of underground utilities as shown hereon are based on the above ground structures and record drawings provided to the Engineer/Surveyor. Locations of underground utilities/structures may vary from locations shown hereon. Additional buried utilities/structures may be encountered. Before excavations are begun, contact utility companies for verification of utility type and field locations.

ELECTRONIC TRANSMITTAL STATEMENT

This document must be compared to the original hard copy issued at the date of the original signature and seal to ensure the accuracy of the information and to further ensure that no changes, alterations or modifications have been made. No reliance shall be made on a document transmitted by computer or other electronic means unless first compared to the original sealed document.

PREPARED FOR:
SNYDER & ASSOCIATES
POTTER HALL - MWSU
SECTION 14, T-57N; R-35W
BUCHANAN COUNTY, MISSOURI



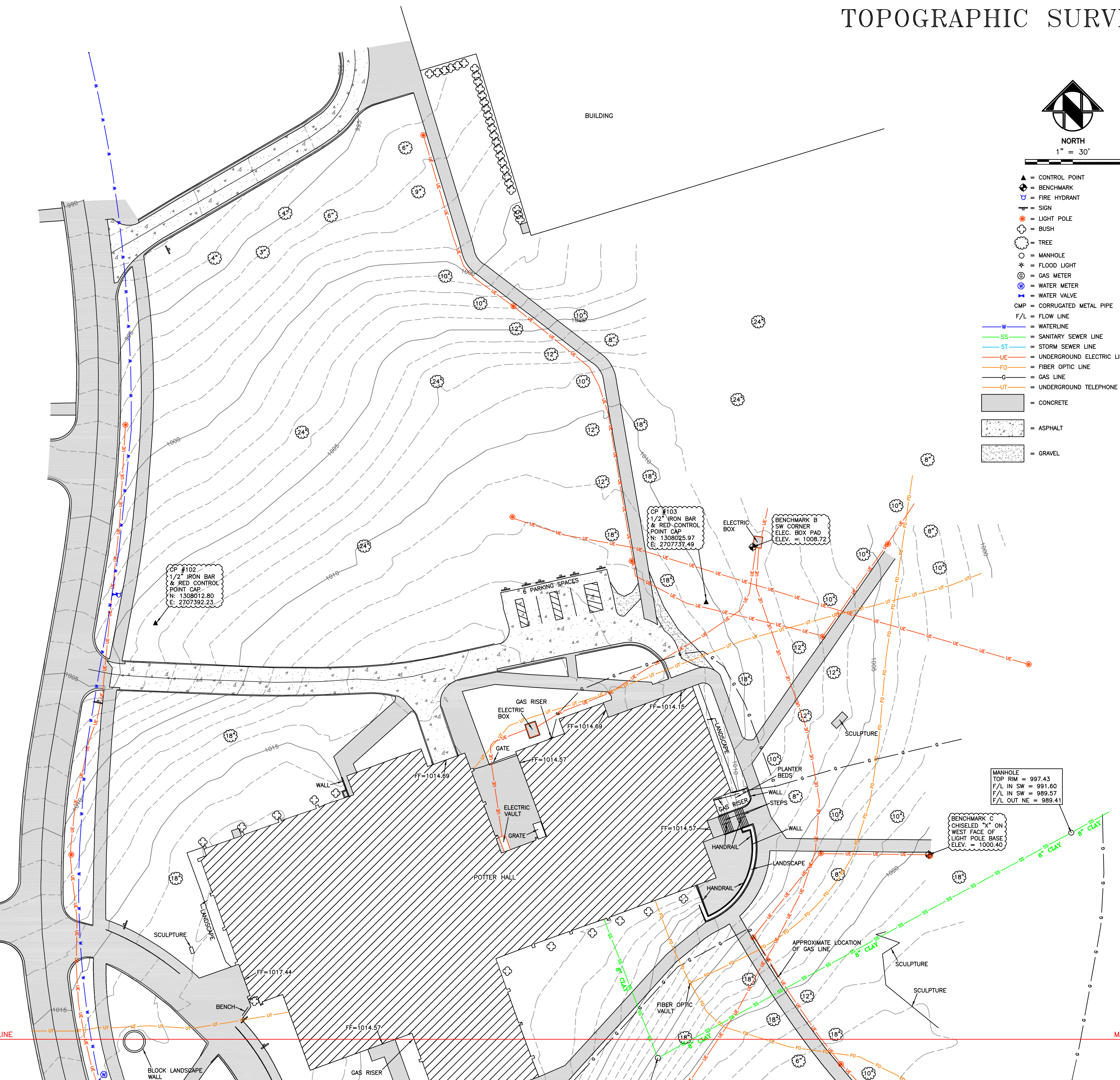
MIDLAND SURVEYING
Midland Surveying, Inc.
Missouri State Certificate of Authority #000120

LAND SURVEYORS - PLANNERS
4784 Frederick Blvd. St. Joseph, MO 64506
ph. (816) 233-7900 fax (816) 233-4852
501 North Market, Maryville, MO 64468
ph. (660) 582-8633 fax (660) 582-7173

FILE: MOWEST_POTTER-HALL	DATE: MARCH 16, 2017	SCALE: 1" = 30'	REVISED:	SHEET NO. 1 OF 2
-----------------------------	-------------------------	--------------------	----------	---------------------

MATCH LINE

MATCH LINE



TOPOGRAPHIC SURVEY

SURVEYOR'S CERTIFICATION:

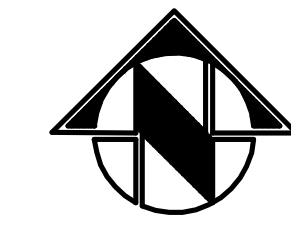
I HEREBY CERTIFY that we have performed a survey and prepared the accompanying plot of the premises described herein which meets or exceeds the current Missouri Minimum Standards for Property Boundary Surveys, 10 CSR 30-2 and 20 CSR 2030-16, and that the results of said survey are represented on this plot to the best of my professional knowledge and belief.

WITNESS hand and seal this Sixteenth (16th) day of March, 2017.

R. Curtis McAdams
Missouri P.L.S. 2005019225

SURVEYOR'S NOTES:

- Horizontal control is in reference to Missouri State Plane Coordinates West Zone NAD 83 as determined by GPS observation of Buchanan County Geographic Reference System Monuments BU-06, BU-07 and BU-16.
- Vertical control is based on the City of St. Joseph Vertical Control Adjustment 2008 as determined by GPS observation of Buchanan County Geographic Reference System Monument BU-07. Vertical Datum is NAVD 88.
- Utility locations are based on Missouri ONE-CALL Ticket Nos. 170660793 and 170660801, and by Missouri Western personnel. Utility companies notified: AT&T Distribution, Missouri Gas Energy, Missouri American Water Company, Kansas City Power & Light, City of St. Joseph Traffic Department, City of St. Joseph Sewer Department, and Suddenlink Communications St. Joseph.
- Subsurface and environmental conditions were not examined or considered as a part of this survey. No statement is made concerning the existence of underground or overhead containers or facilities that may affect the use or development of this tract.
- Sprinkler heads and irrigation lines are not shown hereon.
- All hedges and ground cover on the site may not be shown hereon.



1" = 30'

- ▲ = CONTROL POINT
- ◆ = BENCHMARK
- ⊕ = FIRE HYDRANT
- ⊙ = SIGN
- = LIGHT POLE
- ⊗ = BUSH
- ⊙ = TREE
- = MANHOLE
- ⊕ = FLOOD LIGHT
- ⊙ = GAS METER
- ⊙ = WATER METER
- ⊙ = WATER VALVE
- CMP = CORRUGATED METAL PIPE
- F/L = FLOW LINE
- W— = WATERLINE
- SS— = SANITARY SEWER LINE
- ST— = STORM SEWER LINE
- UE— = UNDERGROUND ELECTRIC LINE
- FO— = FIBER OPTIC LINE
- G— = GAS LINE
- UT— = UNDERGROUND TELEPHONE LINE
- = CONCRETE
- = ASPHALT
- = GRAVEL

UTILITY WARNING

The locations of underground utilities as shown hereon are based on the above ground structures and record drawings provided to the Engineer/Surveyor. Locations of underground utilities/structures may vary from locations shown hereon. Additional buried utilities/structures may be encountered. Before excavations are begun, contact utility companies for verification of utility type and field locations.

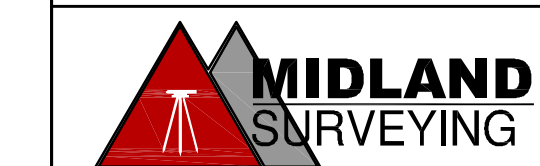
ELECTRONIC TRANSMITTAL STATEMENT

This document must be compared to the original hard copy issued at the date of the original signature and seal to ensure the accuracy of the information and to further ensure that no changes, alterations or modifications have been made. No reliance shall be made on a document transmitted by computer or other electronic means unless first compared to the original sealed document.



MISSOURI ONE-CALL SYSTEM, INC.

PREPARED FOR:
SNYDER & ASSOCIATES
POTTER HALL - MWSU
SECTION 14, T-57N; R-35W
BUCHANAN COUNTY, MISSOURI



Midland Surveying, Inc.
Missouri State Certificate of Authority #000120

LAND SURVEYORS - PLANNERS
4784 Frederick Blvd, St. Joseph, MO 64506
ph. (816) 233-7900 fax (816) 233-4852
501 North Market, Maryville, MO 64468
ph. (660) 582-8633 fax (660) 582-7173

FILE:	DATE:	SCALE:	REVISED:	SHEET NO.
MOWEST_POTTER-HALL	MARCH 16, 2017	1" = 30'		2 OF 2