



## Mission of the Incubator

The St. Joseph Innovation Center and the Christopher S. "Kit" Bond Science and Technology Incubator is excited that your company is considering joining us, and we look forward to developing a strong business relationship with you. As a member of our Incubator, you will soon become an integral part of our mission. Our mission is to:

- Provide access to MWSU faculty, students and staff
- Foster close interaction between businesses located in the KC Region, MWSU and the private sector
- Nurture start-up and emerging technologies
- Promote economic development in Missouri
- Provide access to the soon to be completed \$35,000,000 Remington Science Hall
- Facilitate transfer of technology from the university lab bench to the commercial production line
- The Incubator will soon be a Missouri Innovation Center, and will offer services associated with the Innovation Center System

## *St. Joseph has a strong animal health and nutrition history.*

- Regulatory knowledge of GMPs and GLPs
- Distribution centers
- Regulatory and scientific consulting
- Analytical and CMC preparation
- Manufacturing
- Product development
- Stability assessment

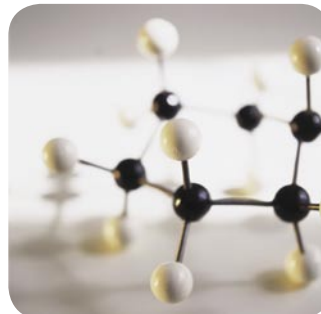


## Institute for Industrial and Applied Life Sciences

IIALS partners with the MWSU Christopher S. "Kit" Bond Science and Technology Incubator, and seeks to bring currently available technology to bear in the market place for commercial ventures operating in St. Joseph and surrounding regions.



4221 Mitchell Avenue, St. Joseph, MO 64507  
Phone: 816-271-4191  
Fax: 816-271-5861  
gclapp@missouriwestern.edu  
www.missouriwestern.edu/lifesciences



# Institute for Industrial and Applied Life Sciences

A Missouri Innovation Center

Christopher S. "Kit" Bond  
Science and Technology Incubator

*Opened May 2008*



Phone:  
816-271-4191  
866-894-6465



# Kit Bond Science and Technology Incubator



## Services at the Incubator

1. Secure facility
2. Business services and consulting
3. Shared administrative services
4. Grant writing expertise
5. Workforce training and development
6. Internship and student worker program
7. Access to SBDC and community services
8. Market rate leases for office and lab
9. Access to university resources

## Entrance Criteria

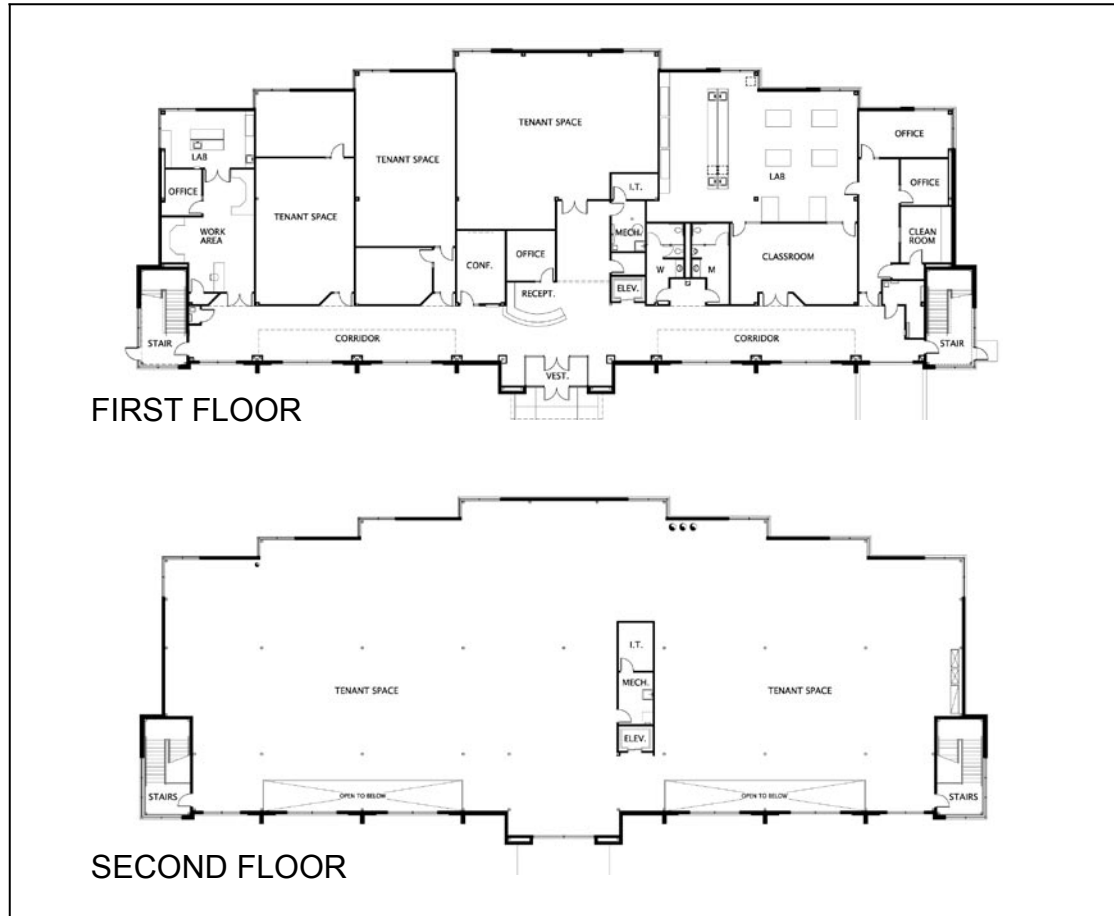
Firms must be involved on-site with one or more of the following:

1. Animal health and nutrition products and services
2. Basic or applied research, product enhancement, development and/or engineering
3. Pre-pilot, pilot or proto-type development
4. Proprietary processes in support of local industry
5. Human health and nutrition products and services
6. Non-profit and University research and development
7. Development and training of workforce enhancement programs
8. Manufacturing development and research appropriate for facility

## Configurable Space

- Phase one saw completion of the first office space and lab. The lab and office are approximately 1100 square feet.
- Phase two additional office and lab space will be completed into designated spaces.
- Laboratory space will be configured into six generic 400 square foot laboratories.
- Offices space will be developed into 12 generic 700 square feet spaces.
- Spaces are configurable at the current time.
- The largest area is expected to be 3,000 square feet.
- Phase two will be completed as needed to match configuration needs.

## Phase One Completion



allison - auxier  
architects, inc.  
924 Kinross  
St. Louis, MO 63103  
Tel: (314) 231-8000  
Fax: (314) 231-2791  
allison@auxierarch.com

REVISION \_\_\_\_\_ DATE \_\_\_\_\_

PROJECT: NEW CONSTRUCTION FOR INCUBATOR BUILDING MISSOURI WESTERN STATE UNIVERSITY

FLOOR PLAN SHEET: A1 OF: