

## Installing the GroupWise Client for Missouri Western Remotely

(Client version 8.0.2 hp2)  
Last Updated: April 8, 2011  
Author: Fred Nesslage

The remote installation for the Windows GroupWise Client for Missouri Western may be performed either on- or off-campus. This version of the client is configured to automatically check for future updates using Missouri Western's website.

**Important:** Make sure to uninstall any version 7 GroupWise client you may have AND reboot before installing a version 8 client! To uninstall, go to the Control Panel, select 'Add/Remove Programs' or 'Uninstall a program' (Windows 7). Reboot your computer after the uninstallation is complete.

These instructions were created using Internet Explorer on Windows XP. Others browsers or versions may be slightly different.

**Note:** Make sure you have no applications open other than your web browser before beginning!

*Step 1:* From the Software Downloads page, click the 'Windows Client (remote install)' link. You will get the File Download dialog box shown below. Click the 'Save' box. Save the file to a location where you can find it later.

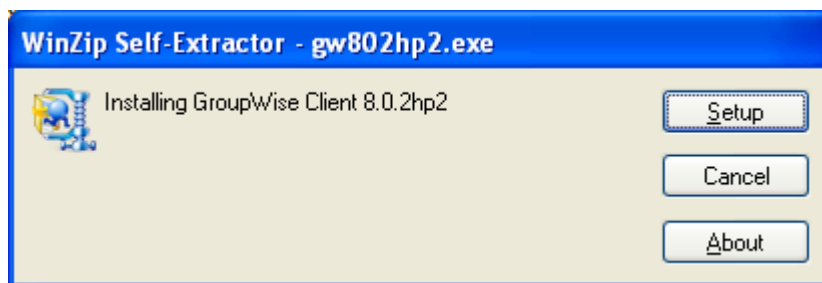


*Step 2:*

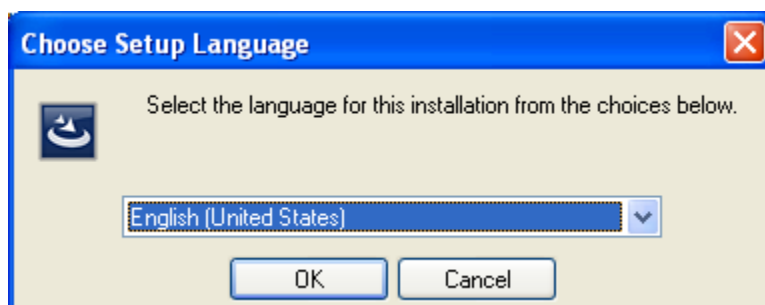
**Windows 2000/XP:** Make sure you are logged-in to your computer as an Administrator! Locate the 'gw802hp2.exe' in the location you saved it. Double-click it to run it.

**Windows Vista or 7:** Locate the 'gw802hp2.exe' in the location you saved it. Right-click on the file, and choose 'Run as Administrator'.

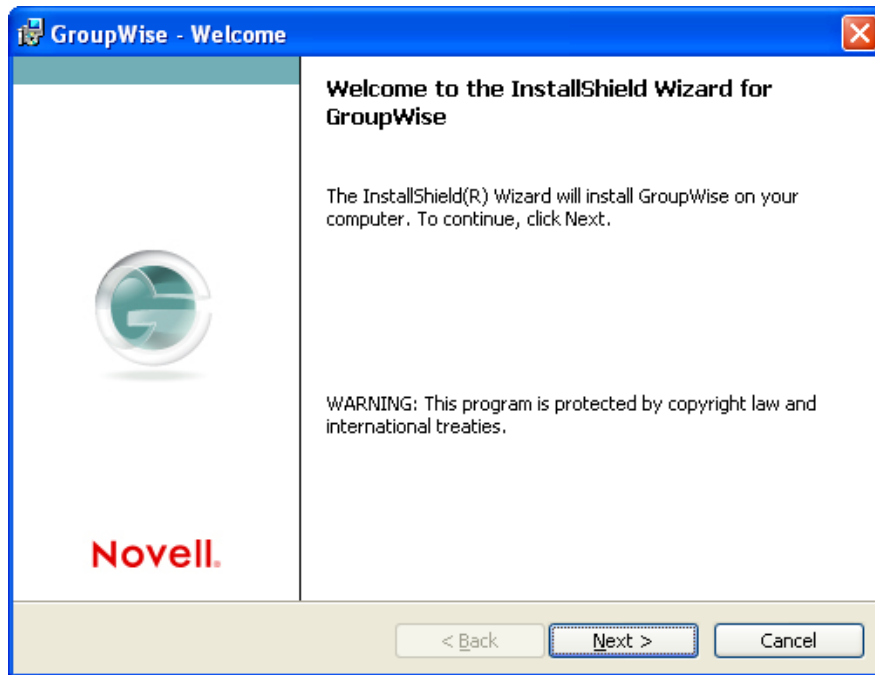
*Step 3:* The downloaded file is a self-extracting ZIP file. Click the 'Setup' button to unpack and run the GroupWise 8 installer.



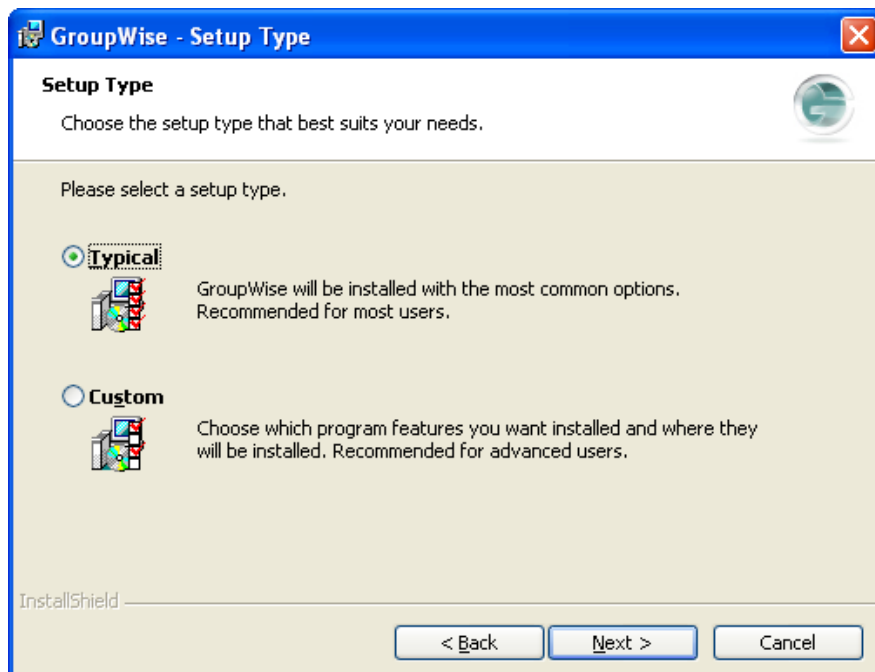
*Step 4:* Choose the language you wish to use during setup, and click 'OK'. English is the default language.



Step 5: When the installer is ready, click 'Next' to install the GroupWise 8 client.



Step 6: The installer will ask if you want a 'Typical' or 'Custom' install. 'Typical' is recommended. Click 'Next' to continue.



Step 7: Click 'Install' to begin installing with typical options.

