



Missouri Western State University

**Third Annual Conference on
Applied Learning
in Higher Education**

Table of Contents:

Welcome	2
Program Committee	3
Fulkerson and Leah Spratt Hall Maps ...	4
Keynote Speaker Biographies	6
Conference Schedule Overview	11
Detailed Conference Schedule	14
About Missouri Western	28



Welcome to Western!

Your focus during this conference is fundamental to student learning: We as college and university educators enable students to take the theory of the classroom and use it well beyond the classroom. Without question, theoretical knowledge has intrinsic value. When it is applied, however, it has even greater value, as it enhances the lives of individuals and society. Your focus here is on this greater value in student learning.

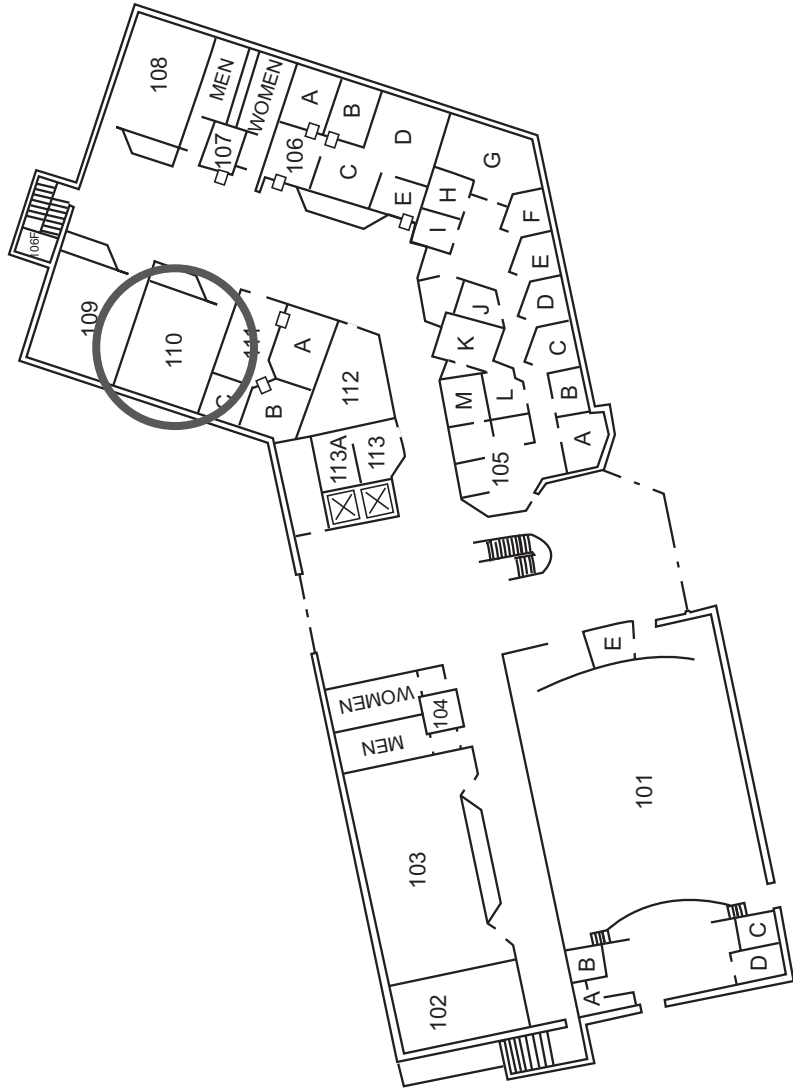
*James J. Scanlon
President*

Program Committee:

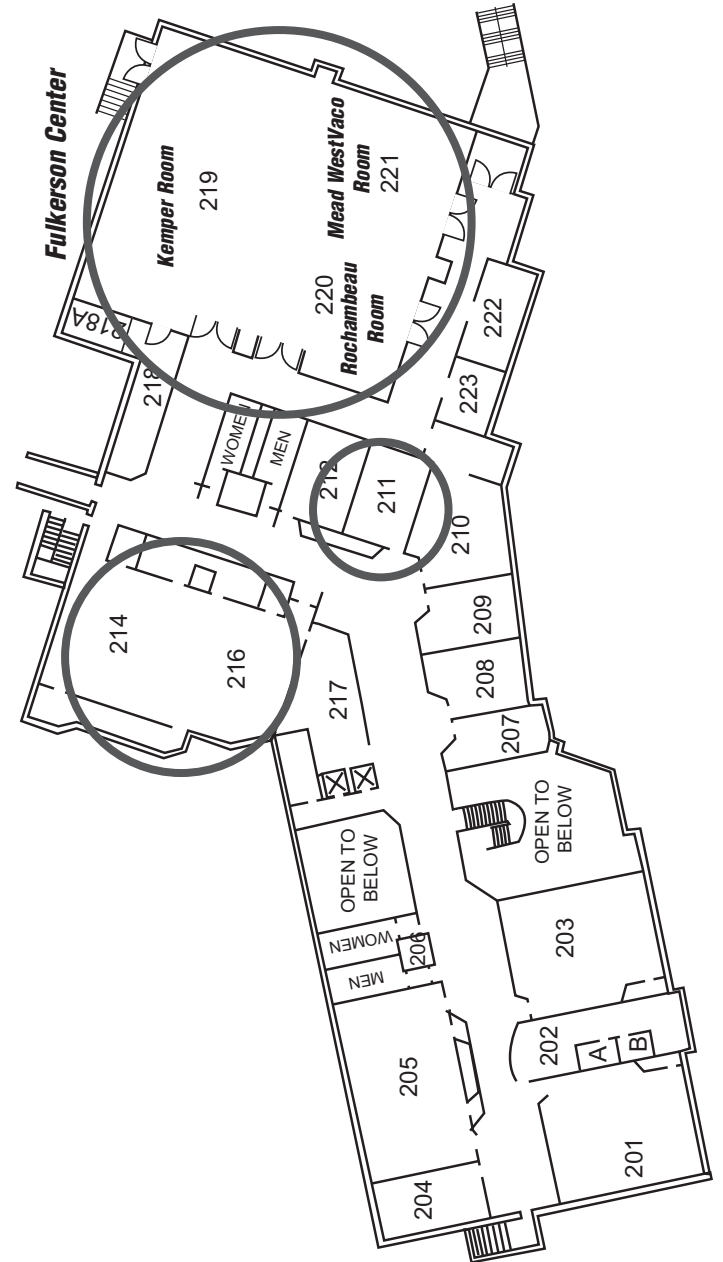
**Conference Director, Kelly Bouas Henry,
Missouri Western State University**

**John Falconer, University of Nebraska - Kearney
Cindy Heider, Missouri Western State University
Susie Hennessy, Missouri Western State University
Roy Schwartzman, University of North Carolina, Greensboro
Paul Shang, University of Missouri - Kansas City**

Spratt Hall First Floor



Fulkerson Center and Spratt Hall Second Floor



Conference Keynote Speakers

Nadinne Cruz

Nadinne Cruz has been a practitioner, leader, advocate, speaker, and author on the need for pedagogies of engagement in higher education for over 25 years. Her early volunteer experiences with peasants in the Philippines and her Filipina-American immigrant consciousness of domestic and international issues inspire her work. She is former Director of the Haas Center for Public Service at Stanford. As executive director of the Higher Education Consortium for Urban Affairs, Nadinne led 18 colleges and universities to develop community-based learning programs. She was the 2005 recipient of the National Youth Leadership Council's Alec Dickson Servant Leader Award to honor exemplary leaders in service-learning. Now an Independent Consultant, Nadinne works with colleges and universities, and national and state Campus Compacts on issues related to service-learning, civic education, and institutionalization.

Conference Keynote Speakers

Mitch Malachowski

Mitch Malachowski will speak on the relationship between research and student learning. A faculty member at University of San Diego since 1984, Mitch maintains an active research program in chemistry, with funding from the National Science Foundation, the Petroleum Research Fund and the Research Corporation. He has published over 50 scientific papers, many with undergraduate co-authors. Additionally, Mitch has published articles on a variety of topics related to undergraduate research. Mitch was president of the Council on Undergraduate Research (CUR) from 2002-2003, and is now a principal investigator on CUR's \$500,000 NSF grant to offer workshops to institutions looking to initiate or enhance undergraduate research programs. Mitch has received numerous awards including the 1999 Davies Award for Teaching Excellence at USD.

Conference Keynote Speakers

Janet Stocks

Janet Stocks will offer a workshop on developing undergraduate research across the curriculum. She is Director of the Center for Academic and Professional Success and Director of the Center for Transformational Learning at Baldwin-Wallace College in Berea, Ohio. A sociologist by training, Janet's academic interests include education, the family, gender, religion, and qualitative methods. She serves as the Chair of the Board of Governors of the National Conferences on Undergraduate Research and Chair of the Undergraduate Research Program Directors' Division of CUR. She has co-edited *Reinvigorating the Undergraduate Experience: Successful Models Supported by NSF's AIRE/RAIRE Program*, published by CUR.

Conference Keynote Speakers

Carlos Ernesto Teissier

Carlos Teissier will offer a workshop on internationalization of campuses. Carlos currently serves as the International Affairs Director for the Universidad Regiomontana. He has negotiated several international agreements with institutions from the five continents, bringing international activity at Universidad Regiomontana from 0 to 42 active international agreements -- from student and faculty exchanges to cooperative research activities -- positioning Universidad Regiomontana as one of the 10 most active Mexican universities in the international arena. Carlos created a program that helps design, implement and measure the internationalization of the University for every single department involved. In 2004, Carlos was an invited Presenter at NAFSA's Association of International Educators conference in Baltimore. He is currently finishing his first book, *Integral Model for the Internationalization of the University*.

CONFERENCE SCHEDULE OVERVIEW
Friday, February 22, 2008

Conference Keynote Speakers

Edward Zlotkowski

Edward Zlotkowski will speak on applied learning and student engagement. He is a professor of English at Bentley College. In 1990, he founded the Bentley Service-Learning Center, an institution-wide program that involves all of the college's undergraduate academic departments, more than a quarter of its full-time faculty, and several thousand students. He has lectured and written on a variety of service-learning topics. Under the auspices of the Invisible College and Campus Compact, he serves as general editor of a new monograph series exploring the relationship between service-learning and individual academic disciplines. He has recently been named a senior associate of the American Association of Higher Education. Zlotkowski received a 2006-07 U. S. Fulbright Scholar grant that supported his travel to Ireland, where he spent January through June 2007 at the Dublin Institute of Technology supporting the new Community Learning Programme.

TIME	ROOM	
9-10:50 am	Mead Westvaco Room	Workshop Internationalization at Home: The First Steps Carlos Teissier , Universidad Regiomontana
	Spratt 110	<ul style="list-style-type: none"> • Native Kenyan Creations • Student Learning and Professional Academic Development through Service and Consulting Contracts: Issues and Experiences
11-11:50 am Concurrent Sessions	Spratt 211	<ul style="list-style-type: none"> • Student Perspectives of Service-Learning in the Community-Based Nursing Program • Strategies and Tools for Assessing the Learning in a Service-Learning Research Project Required in a Web Based Course
	Spratt 214	<ul style="list-style-type: none"> • Financing Undergraduate Research • Assessing Applied Learning in Higher Education: An Outcomes-Based Approach
	Spratt 216	<ul style="list-style-type: none"> • Generating, Deepening, and Documenting Learning: The Power of Critical Reflection in Applied Learning • Service-eLearning: Educating for Citizenship
12:00-1:30 pm	Kemper Room	Lunch and Plenary Session Having our Cake and Eating It, Too: The Wonders of Undergraduate Research Mitch Malachowski , University of San Diego

CONFERENCE SCHEDULE OVERVIEW
Friday, February 22, 2008

TIME	ROOM	
2-2:50 pm Concurrent Sessions	Spratt 110	<ul style="list-style-type: none"> Overcoming Structural and Attitudinal Barriers to Service-Learning Graduate Students' Experiences in Researching Hateful/Hurtful Speech
	Spratt 211	<ul style="list-style-type: none"> Putting the Pieces Together: Building Community-Based Learning Activities for Health Professions Students Online Student Organizations: Engaging Distance Students Beyond the Virtual Classroom
	Spratt 214	Symposium Synthesizing Applied Learning and Critical Thinking: William Jewell College's New Major
	Spratt 216	Symposium Applied Learning: A Vital Part of an AACSB-Accredited Institution's Curriculum
3-3:50 pm Concurrent Sessions	Spratt 110	<ul style="list-style-type: none"> Engaging in High Quality Research while Remaining Student Centered: A Challenge for the 21st Century The History of Mexican-American Immigration to Kansas City: Using Student Research to Enhance Classroom Content
	Spratt 211	<ul style="list-style-type: none"> Internationalization and Intercultural Awareness Learning through Serving: Guatemala
	Spratt 214	Symposium Goals and Realities in Successful Student Research Programs: Perspectives from Administration, Faculty, and Students
	Spratt 216	Symposium Applied Interdisciplinary Learning in the Outdoor Semester: Processes and Outcomes
4-5:15 pm	Rochambeau Room	Poster Session
5:30-7 pm	Kemper Room	Dinner and Plenary Session Why Applied Learning and Civic Engagement Need Each Other, Nadinne Cruz
8 pm	Stoney Creek Inn	Social Hour

CONFERENCE SCHEDULE OVERVIEW
Saturday, February 23, 2008

TIME	ROOM	
8-9:00 am	Kemper Room	Breakfast Buffet and Roundtable Sessions
9-10:50 am	Mead WestVaco Room	Workshop Undergraduate Research in All Disciplines: Models, Challenges and Campus-wide Benefits Janet Stocks , Baldwin-Wallace College
11-11:50 am Concurrent Sessions	Spratt 110	<ul style="list-style-type: none"> Reflective Discussion on the Keynote: Why Applied Learning and Critical Engagement Need Each Other Adult Development & Aging: Service-learning in an Inner-city Nursing Home
	Spratt 211	<ul style="list-style-type: none"> Weaving Service-Learning into a Traditional Course To Mexico with Love: Educationally Meaningful Service in a Study Abroad Program
	Spratt 214	Symposium SyBR-U: An Interdisciplinary, Interinstitutional Research Training Program
	Spratt 216	Symposium Interrelationships to Employ Service Learning and the Benefits for Students in the Sciences
12:15-2 pm	Kemper Room	Lunch and Plenary Session Student Engagement, Hands-on Learning, and the First-Year Student Edward Zlotkowski , Bentley College

DETAILED CONFERENCE SCHEDULE
Friday, February 22, 2008

9-10:50 a.m. Conference Workshop

Mead WestVaco Room of the Fulkerson Center

Internationalization at Home: The First Steps

CARLOS E. TEISSIER, Universidad Regiomontana

11-11:50 a.m. Concurrent Sessions

Spratt 110 Moderator: Cindy Heider

- *Native Kenyan Creations*

HANNAH SMITH & KELLI SCHUTTE, William Jewell College

Microenterprise programs have proven to be an effective method of assisting the poor. By researching best practices and partnering with existing organizations, a Jewell faculty member and student traveled to Kenya, establishing a microenterprise program in a remote village. We will be sharing the benefits, challenges and lessons learned through this global student/faculty endeavor.

- *Student Learning and Professional Academic Development through Service and Consulting Contracts: Issues and Experiences*
JITENDRA TEWARI, Missouri Western State University

For universities, negotiating a contract with client organizations is difficult since they are perceived as pro bono service providers. The presentation discusses issues of student work continuity, contract negotiation, perceptual attitudes that treat universities as philanthropic institutions, and methods for resolving conflicts between student learning objectives, client organization requirements, and academic objectives.

Friday, February 22, 2008

Spratt 211 Moderator: Kelly Henry

- *Student Perspectives of Service-Learning in the Community-Based Nursing Program*

SUSAN SIMS-GIDDENS & CAROLINE HELTON, Missouri State University

A longitudinal research design was initiated to determine changes in students': perception of community service and civic responsibility; awareness about biases and prejudices toward vulnerable populations; development of problem solving skills; and knowledge of the role of service learning as part of the academic nursing program.

- *Strategies and Tools for Assessing the Learning in a Service-Learning Research Project Required in a Web Based Course*

TAMARA L. SMITH & GERALDINE STIRTZ, University of Nebraska—Kearney

Requiring and assessing a service-learning research component in a web-base course is challenging. Individuals attending this session will learn about structuring a component and will be provided an example of the methodology and the tool used for assessing the learning of the student in this on-line Biology course.

Spratt 214 Moderator: John Falconer

- **Invited Presentation**, *Financing Undergraduate Research*
JANET STOCKS, Baldwin-Wallace College

One issue that often impacts a faculty member's ability to conduct research in which undergraduates are involved is money. In this session we will explore standard and more creative methods to identify funding sources for small and larger projects in a variety of disciplines.

- *Assessing Applied Learning in Higher Education: An Outcomes-Based Approach*

BETTY A. BLOCK, Missouri Western State University

This presentation includes an outcomes-based approach to assessing applied learning in higher education internships and practica. The presenter will explain methods of creating assignment rubrics that detail field-based objectives and measure dispositions in the field. The process of

aligning assessment rubrics to assignment rubrics – detailing how to measure student outcomes will also be explained. Finally, practical strategies to interpret outcomes-based assessment information into grades will be discussed.

Spratt 216 Moderator: Roy Schwartzman

- **Invited Presentation, *Generating, Deepening, and Documenting Learning: The Power of Critical Reflection in Applied Learning***
PATTI CLAYTON, North Carolina State University

Applied learning opportunities of various sorts have in common the potential for significant student learning and the challenge of generating and documenting that learning. Critical reflection oriented toward well-articulated learning objectives is key to generating, deepening, and documenting student learning. This presentation will introduce a model for integrating critical reflection and assessment, including a tool and rubric that has applicability across the spectrum of applied learning pedagogies.

- ***Service-eLearning: Educating for Citizenship***
EMILY DONNELLI-SALLEE & AMBER DAILEY-HEBERT, Park University

The presenters offer a new pedagogical model, service-eLearning--defined as an integrative pedagogy that engages learners through technology in civic inquiry, service, reflection, and action (Dailey, Donnelly, DiPadova-Stocks, 2007, in press)--and discuss ways that this new educational paradigm responds to the needs of today's learners.

12-1:30 p.m. Lunch and Plenary Session

Kemper Room

Having our Cake and Eating It, Too: The Wonders of Undergraduate Research

MITCH MALACHOWSKI, University of San Diego

2-2:50 p.m. Concurrent Sessions

Spratt 110 Moderator: Jill Miller

- **Invited Presentation, *Overcoming Structural and Attitudinal Barriers to Service-Learning***

ROY SCHWARTZMAN, University of North Carolina-Greensboro

Several years of service-learning teaching and administration reveal recurrent roadblocks that can be anticipated and addressed systematically. The presentation covers student skill deficits, community partner distribution, and misperceptions about service-learning. Participants receive handouts on ways to avoid or ameliorate these commonly observed problems.

- ***Graduate Students' Experiences in Researching Hateful/Hurtful Speech***

WENDY L. GEIGER & E. SAM COX,
University of Central Missouri

This service learning project identified the use of hateful/hurtful speech in a rural Midwestern middle/high school. The project spanned two semesters, utilizing two graduate courses. The effect of the service learning project on the graduate students was documented by analyzing written course evaluations and focus group responses. The findings indicated students appreciated the applied learning experience, but few recognized the project's link to citizenship and community engagement.

Spratt 211 Moderator: John Falconer

- ***Putting the Pieces Together: Building Community-Based Learning Activities for Health Professions Students***

JOY D. DOLL, TERESA M. COCHRAN, CAROLINE GOULET, KATE MARTENS STRICKLETT, & ANN RYAN HADDAD, Creighton University

The School of Pharmacy and Health Professions at Creighton University has enacted health-related community engagement to enhance student learning facilitated by a centralized infrastructure. Community-based learning bridges didactics to applying skills with complex, underserved populations facing health disparities. The process of facilitating this learning takes extensive planning and evaluation. This presentation will discuss the model and engage participants in application for their own educational institution.

- *Online Student Organizations: Engaging Distance Students Beyond the Virtual Classroom*

B. JEAN MANDERNACH, TERESA MASON, ANDREW T. JOHNSON, & BRIAN J. COWLEY, Park University

There are over 500 online Social Psychology majors at Park University. This presentation addresses our efforts to create an online Social Psychology Club to match what we provide for our face-to-face majors. Our presentation will include: structural features, advisor's duties, student leadership selection, reasonable activities, challenges and successes, and assessment.

Spratt 214 Invited Symposium Moderator: Kelly Henry

- *Synthesizing Applied Learning and Critical Thinking:*
William Jewell College's New Major

RON WITZKE, RUTH KAUFFMANN, KELLI SCHUTTE, & KATHLEEN TACELOSKY, William Jewell College

The William Jewell College faculty created and approved an applied learning major beginning in the fall of 2007, entitled ACT-In (Applied Critical Thought and Inquiry). The 38-hour, newly named, academic core – Critical Thought and Inquiry – can be combined with three applied learning components to comprise the ACT-In major, thus allowing any student the opportunity for a second major. Presenters will give an overview of the program and discuss the challenges and opportunities of synthesizing applied learning with critical thinking.

Spratt 216 Symposium Moderator: Carol Roever

- *Applied Learning: A Vital Part of an AACSB-Accredited Institution's Curriculum*

LISA TOMS, GAYLE WEBB WHITE, SAM RINER, & JAMES CLARK, Southern Arkansas University

Applied learning has become a necessity for students' success; this means total faculty involvement which the symposium addresses. Topics include distant internships/virtual internships/on-campus internships, professional development month, classroom-to-career day, executive-in-residence program, various student research programs, co-curricular programming with two-year technical colleges, field trips, and numerous service learning programs.

3-3:50 p.m. Concurrent Sessions

Spratt 110 Moderator: Kelly Henry

- **Invited Presentation**, *Engaging in High Quality Research while Remaining Student Centered: A Challenge for the 21st Century*
MITCH MALACHOWSKI, University of San Diego

Predominately undergraduate institutions are involved in a mad dash to imbed more faculty research throughout our campuses. As this move takes place, institutional cultures are changing along with faculty lives and perspectives. But what about our students? Are we leaving them in our research wakes? I will discuss the impact of faculty scholarship on our campuses and how undergraduate research serves as a means for us to retain our student-centeredness.

- *The History of Mexican-American Immigration to Kansas City: Using Student Research to Enhance Classroom Content*
ANNA FLETCHER, NICOLE REVENAUGH, RUTH KAUFFMANN, & DONETTE ALONZO, William Jewell College

The presenters will share their experience and ideas for creating dynamic, collaborative and student-driven research projects. Primary documents such as newspapers and interview transcripts are available in the archives of public libraries and can be used for student research with tangible benefits for both the classroom and the community.

Spratt 211 Moderator: Jill Miller

- **Invited Presentation**, *Internationalization and Intercultural Awareness*
CARLOS E. TEISSIER, Universidad Regiomontana

Students are graduating from higher education institutions and are thrown into real life. Today's global world requires professionals that are able to perform in different cultural contexts in an efficient way. Sometimes the real challenge lies not in the student, but in the institutions and us, the faculty members.

- *Learning through Serving: Guatemala*
BRENDA ROSS & LINDA PLATT, Cottey College

Students participate in a ten-day international service-learning project in Guatemala to develop recognition of the power of the individual, the resiliency of mankind, and the effect of circumstances on people's lives. Learning is accomplished through cultural interaction, reflective journaling, and group discussion. Pre-and post-journaling is used for assessment.

Spratt 214 Symposium Moderator: Susie Hennessy

- *Goals and Realities in Successful Student Research Programs: Perspectives from Administration, Faculty, and Students*
J. SHAFFER, J. FALCONER, & C. GILLING
University of Nebraska—Kearney

An administrator, faculty mentor, and student researcher describe prior goals and resulting outcomes from a research program in which they participated. Panelists each had a different interest in the program, but their experiences converged resulting in purposeful outcomes. Feeding these reflections back into program refinement can improve experiences and outcomes in future years.

Spratt 216 Symposium Moderator: Roy Schwartzman

- *Applied Interdisciplinary Learning in the Outdoor Semester: Processes and Outcomes*
ELIZABETH LATOSI-SAWIN, RUSSELL E. PHILLIPS III, JAMES GRECHUS, KENNETH DAGEL, AMY SAXTON, BRANDI BRUCE, JOESEY JACKSON, & BRAD LANDRUM,
Missouri Western State University

This symposium will examine practical matters in integrating undergraduate courses and provide data on the benefits of interdisciplinary involvement in a unique study away experience –Outdoor Semester. Students take 15 credits and travel with their professors for four weeks of the semester, doing outdoor activities such as canoeing and camping.

4 - 5:15 pm POSTER SESSION
Rochambeau Room of the Fulkerson Center

1. *Goldpoints - an Interdisciplinary, Mutli-Course Applied Learning Project*, **Deborah Becker & Connie Hecker**,
Missouri Western State University
2. *Promoting Responsive and Reflective Teaching Through Applied Learning Field Experiences*
Kit Blake & Michael Smith, Missouri Western State University
3. *Applied Geriatric Learning Experiences: A Portfolio Guide*
Wanda Bonnel & James Sall, University of Kansas
4. *Assessing Service Goals for Students, Instructors and Site Supervisors*
Teddi S. Deka, Missouri Western State University
5. *Mobile Learning Environments: Creating a Connection in the Community*
Caren Dick, Washburn University
6. *With Discipline and Justice for All*
Elizabeth Hendrix, Missouri Western State University
7. *Applied Learning in Equine Studies: The Use of Visual Arts in Student-Centered Learning*
Janice L. Holland & Kimberly I. Tumlin, Midway College
8. *Service Learning Component in Computer Networking Course*
Wen-Jung Hsin & Dennis Kerkman, Park University
9. *Negotiating with Terrorists: Lessons Learned in Northern Ireland*
Joanne Katz & Mark Hoerl, Missouri Western State University
10. *Students in Community: A Model for Applied Learning and Program Evaluation*
Kathy Peterson & Sheryl Leytham, Grand View College

11. *In Your Business*
Tim Scales, Indiana University East
12. *Nursing Student Attitudes and Beliefs of Poverty: Did It Change After Community Engagement?*
Susan Sims-Giddens & Caroline Helton, Missouri State University
13. *Student Motivation in Equine Studies Skills Learning: "Just Tell Us What Is on the Test!"*
Kimberly I. Tumlin, Midway College, **Rachel Linares**, Midway College, & **M. Wes Schilling**, Mississippi State University
14. *Applied Learning Opportunities for Students in Core Classes*
Nannette Wolford, Missouri Western State University
15. *Clean Renewable Energy Technology - Solar Cells: An Undergraduate Summer Research Project*
David A. Bennett & Jinwen Zhu, Missouri Western State University
16. *The Geography of the Past: Service Learning through Historic Case Studies*
Ann M. Legreid, University of Central Missouri
17. *Psychology Capstone: Strengths and Synthesis*
Amy Bucher, Avila University
18. *Quality Eco-touring Through a Field Natural History Experience*
David Ashley & Thomas Rachow, Missouri Western State University
19. *Community Nursing in a Global Context*
Julie Baldwin, Missouri Western State University
20. *Applied Learning: Group Geriatrics Teaching Assignment*
Jackie Nowak, University of Kansas

21. *Arkansas Delta Oral History Project: A Collaborative Service Learning Project between the University of Arkansas and Arkansas Delta High Schools*
Anne Raines, Krista Jones, & Laine Gates, University of Arkansas
22. *Applied Learning Opportunities for Students in a University Wellness Screening Program*
William Russell, Cristi Campbell, Cosette Hardwick, Russell Phillips, & Deb Uplinger, Missouri Western State University
23. *Practical Applications for Applied Learning*
Suzanne Kissock, Missouri Western State University
24. *Measuring Biodiversity Using Vegetation Maps and Field Transects: An Applied Learning Approach to Non-majors Biology Learning*
Cary D. Chevalier, John Rushin, & Richard Boutwell, Missouri Western State University
25. *Applied Learning Experiences through Skill Set Development Workshops Managed through Student Organizations: The MWSU Student Chapter of The Wildlife Society Model*
Cary D. Chevalier, Dave Ashley, John Rushin, & Richard Boutwell, Missouri Western State University
26. *Raccoon Summer Den Site Selection in Urban Male Raccoons: An Applied Learning Experience through MWSU Summer Research Institute*
Cary D. Chevalier, Missouri Western State University

5:30-7 p.m. Dinner and Plenary Session

Kemper Room of the Fulkerson Center

Why Applied Learning and Civic Engagement Need Each Other

NADINNE CRUZ

8:00 p.m. Social Hour

Stoney Creek Inn

Saturday, February 23, 2008

**8-9 a.m. Breakfast Buffet and Roundtable Sessions
Kemper Room**

1. *Identifying Risk Exposure When Supervising Internships, Practica, and Service-learning Projects and Exploring Ways to Manage These Risks*
James Bargar & Tim Kissock, Missouri Western State University
2. *Writing Across the Biology Curriculum at Both Undergraduate and Graduate Levels*
Kimberly A. Carlson, Joe Springer, & Tamara Smith, University of Nebraska—Kearney
3. *Education and Missional Experiential Learning in Rwanda, East Africa*
Eugene A. Dunkley, Greenville College
4. *Rubrics: Assessment and Teaching Tools in an Equine Studies Curriculum*
Rachel Linares & Kimberly I. Tumlin, Midway College
5. *Teaching Candidacy (a.k.a. Student Teaching) and the Hidden Curriculum*
Daniel Paul Schwartz, formerly Saint Louis University
6. *Letting the CAT Out of the Bag: Service Learning and Title I Schools*
Olivia Barzydlo, Saint Mary's College
7. *Applied Learning, Reflecting and Sharing from a Distance*
Lindsey Montello, Stephanie Roehm, & Wanda Bonnel, University of Kansas
8. *The Power of Critical Reflection in Applied Learning: Further Discussion*
Patti Clayton, North Carolina State University

Saturday, February 23, 2008

9-10:50 a.m. Workshop

Mead WestVaco Room

Undergraduate Research in All Disciplines: Models, Challenges and Campus-wide Benefits

JANET STOCKS, Baldwin-Wallace College

11-11:50 a.m. Concurrent Sessions

Spratt 110 Moderator: Roy Schwartzman

- *Reflective Discussion on the Keynote: Why Applied Learning and Critical Engagement Need Each Other*

NADINNE CRUZ

Nadinne will lead a reflective discussion on her plenary address.

Why should applied learning be fundamental to civic education, as many advocates insist? Alternatively, why should civic engagement be integral to applied learning? She argues that lack of applied learning as an educational fundamental is connected to social problems that service-learning and civic education attempt to address.

- *Adult Development & Aging: Service-learning in an Inner-city Nursing Home*

JENNIFER A. OLIVER, Rockhurst University

Forty-three students were paired with a nursing home resident. Students designed and implemented an appropriate activity, rated various aspects of the project at each stage, and completed a final assessment of the project. Project components will be described, and results of the activities and on student assessment will be discussed.

Spratt 211 Moderator: Kelly Henry

- **Invited Presentation, *Weaving Service-Learning into a Traditional Course***

EDWARD ZLOTKOWSKI, Bentley College

In this workshop we will begin by looking at several conceptual models that help pinpoint what is most distinctive about service-learning, and then turn the conversation to practical issues related to its integration into the traditional curriculum.

- *To Mexico with Love: Educationally Meaningful Service in a Study Abroad Program*

MICHELLE VERDUZCO & RACHEL BERNSTEIN,
Indiana University-Purdue University Indianapolis

To Mexico with Love is a study abroad program offered at Indiana University- Purdue University-Indianapolis (IUPUI). This program utilizes service learning with the aim of enriching the experiences of its participants as well as giving back to its host community in Cuernavaca, Mexico. This presentation will highlight how To Mexico with Love has incorporated the Five Critical Elements of Educationally Meaningful Service.

Spratt 214 Symposium Moderator: Cindy Heider

- *SyBR-U: An Interdisciplinary, Interinstitutional Research Training Program*

TODD T. ECKDAHL, JEFFREY L. POET, JORDAN BAUMGARDNER, & TOM CROWLEY

Missouri Western State University

Many profound scientific discoveries are made at the intersections of traditional scientific disciplines by teams of researchers. Faculty at Missouri Western State University and Davidson College were awarded an NSF grant to implement a program that will train undergraduate students to work in the exciting new field of synthetic biology.

Spratt 216 Symposium Moderator: Jill Miller

- *Interrelationships to Employ Service Learning and the Benefits for Students in the Sciences*

STEVEN ALLEN, TOM BERTONCINO, DIANA BOYD MCELROY, TIMOTHY M. GABOR, BRIAN L. HOFFMAN, DONNA K. HOWELL, ANDREW JOHNSON, LOREN RAY LAUGHLIN, MARY “KRISI” SIEDLIK, BRITTANY THORNBURG, & DONALD L. WILLIAMS, Park University

This symposium addresses a wide range of interrelationships utilized to create and employ service-learning activities relevant to scientific disciplines at a small campus. Projects employed will be highlighted by respective faculty/staff for 1) objectives and overview of the project, 2) interrelationships used, and 3) future benefits derived for the students.

12:15-2 p.m. Lunch and Plenary Session

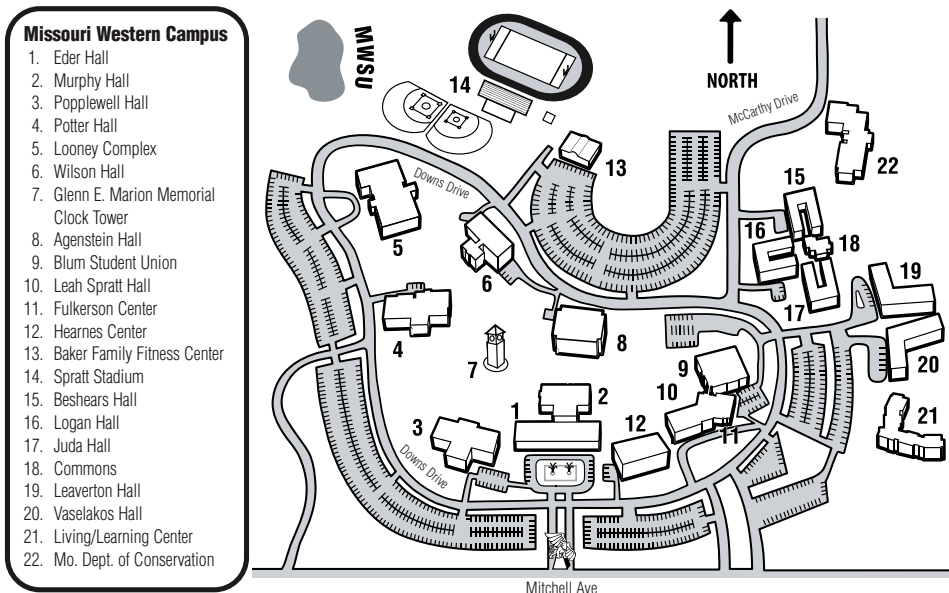
Student Engagement, Hands-on Learning, and the First-Year Student

EDWARD ZLOTKOWSKI, Bentley College

About Missouri Western State University, St. Joseph, Missouri

With its roots in a five-county contiguous region of northwest Missouri, Western has proudly served the higher education needs of its constituencies since 1915. Originally founded as St. Joseph Junior College, Western was transformed into a four-year college in 1969, became a full member of the State of Missouri system in 1977, and was designated a university in 2005. Today, over 180 faculty members teach in technologically up-to-date instructional facilities, and excellent recreational facilities are complemented by a 744-acre beautifully landscaped campus. Enrollment is approximately 5,300.

The university is a four-year, state-supported institution providing a variety of degree programs through the colleges of liberal arts and professional studies. The university is authorized under Missouri statutes to offer master's programs, four-year baccalaureate programs, two-year associate degrees, preprofessional transfer programs and one-year certificates. In addition, the university offers continuing education courses, seminars, conferences and workshops suited to the needs of the community and serving groups throughout the nation.





Missouri Western State University
4525 Downs Drive
St. Joseph, Missouri 64507

www.missouriwestern.edu
816.271.4266 or 800.662.7041

Western is an equal opportunity institution.